

# Tower Grove Heights Gazette

Volume 11, No. 2

Grand to Gustine

Arsenal to Utah Place

March 2000



## Spring House Tour Showcases Grand South Grand Living

by Julie Mudd

"A Grand Century," the seventh annual Grand South Grand House & Garden Tour, is set to open April 15-16.

This popular event, drawing more than 1,000 visitors to our area, showcases city living in five neighborhoods bordering Grand Boulevard between Interstate 44 and Gravois Avenue: Compton Heights, Compton Hill Reservoir Square, Shaw, Tower Grove East and Tower Grove Heights.

Houses on tour in Tower Grove Heights include 3615 Utah Place and 3804 Hartford Street. An additional house is being negotiated.

### INTERIOR DESIGN CONTEST

The 2000 tour will feature a designer showcase at each home, with the theme of a picnic in the park. A different interior designer for each of the 12 homes on tour will create a unique tea setting that best demonstrates his or her design talents and accentuates the homeowner's décor.

Designs will be voted on by a panel of judges including representatives from the St. Louis Post-Dispatch, St. Louis Home & Lifestyles magazine, The Ladue News and West Newsmagazine.

### DONATION OF PROCEEDS

While the obvious benefit of the tour is to show off our beautiful neighborhoods and lift decorating ideas from one another, the house tour is a charitable event that each year donates its proceeds to a public edifice or organization serving all five neighborhoods.

Proceeds from the 2000 house tour will be a special contribution to the Grand Visions Marketing Coalition. Grand Visions is a grassroots organization made up of volunteers from the five tour neighborhoods, committed to promoting residential living and improving the St. Louis area's perception of our beautiful South Grand neighborhoods. For more information about Grand Visions, contact Elizabeth Braznell 664-0844.

Past tour proceeds have gone toward restoring the Tower Grove Park gate at Grand and Arsenal, a contribution to the Shaw neighborhood's youth program BicycleWORKS, restoration of the Naked Truth statue in Compton Hill Reservoir Park, contributions to the International Institute/Scouts Explorer Post and to the South Side YMCA.

### HISTORY & PLANNING

Formerly, the neighborhoods that make up the Grand South Grand House & Garden Tour held individual house tours of their own. These separate house tours tended to compete with one another due to geographic proximity, and the challenge of enlisting 10 or 12 homes per neighborhood every year was enormous. Since 1993, the neighborhoods have teamed up for a joint tour that promotes the entire South Grand area while still

emphasizing the architectural distinction of the five neighborhoods.

The 2000 event is the culmination of almost a year's planning by the house tour committee, which is comprised of members from the five neighborhoods. Representing Tower Grove Heights on the committee are Elizabeth Braznell, Diane Hurwitz, Jean Iezzi and Cheryl Jones.

Tour homes are selected by way of recommendations from neighborhood residents, requests from homeowners interested in being on the tour-and, of course, some friendly arm-twisting by committee members, when homeowner prospects evade, "My house isn't ready yet; ask me next year."

### TOUR & TICKET INFORMATION

The tour is open 11:00 AM-5:00 PM Saturday and Sunday April 15-16, and begins at Compton Hill Reservoir Park, corner of Grand and Russell.

Tickets are \$10.00 in advance, \$12.00 the weekend of the tour; group discounts are available. Call 773-4844 for advance tickets or inquire at Botanicals on the Park or Vintage Haberdashery in the Grand South Grand Business District. Day of tour tickets can be purchased at the house tour booth at Compton Hill Reservoir Park.

Free shuttle buses will be provided both days to carry guests along the tour route. Free parking is inside the Compton Hill Reservoir.

### YOU CAN HELP

It takes the whole neighborhood to make this event a success, and there is a role for everyone. Volunteers are still needed to work in the tour homes or at the ticket booth. Shifts are generally three hours in length, 11:00 AM-2:00 PM and 2:00 PM-5:00 PM. Volunteers receive free admission to the house tour both days. Anyone interested in volunteering please contact Padra Scott at 776-7848 or Debra Peppers at 776-5389.

Residents living on the blocks of tour homes are asked to park vehicles off-street during tour hours, to allow space for the shuttle buses and parking for tourgoers using their own cars.

All Tower Grove Heights residents are asked to ensure lawns are mowed, gardens are tended, and any trash is cleared from streets and sidewalks. Be warm and cordial; greet tour guests, welcome them to the neighborhood and make them feel at home in Tower Grove Heights.

Remember: Many new homeowners select Tower Grove Heights because they discovered it on house tours. This is our opportunity to showcase not just a sampling of our lovely houses, but the entire neighborhood. We all are on tour April 15 and 16.





## Dining on Grand South Grand

The Tower Grove Heights Gazette  
 Founding Editor: Janice Nesser  
 Publications Chairperson - Editor:  
 Sara Langan

Production Managers- Jim Rintoul,  
 Ian Wilkinson

Business Manager: Colleen Santino

Layout Design: Donna Mayes

Staff: Mark Abbott, Tim Akin,

Debbie Akin, Audrey Anderson,

Elizabeth Braznell, Ruth Brooks,

Richard Clinebell, Matthew

Fernandes, Sarah Griesbach, Don

Hardin, Rich Iezzi, Erin O'Reilly,

Suzanne Rhodenbush, Jay Rosloff,

Joe Thele, Cinder Wilkinson, Terry

Winkelman

The Gazette is a non-profit  
 publication published bi-monthly by  
 the Tower Grove Heights

Neighborhood Association. For

information concerning advertising  
 call Colleen Santino at 773-5772.

Your letters and comments are  
 always welcome at the Gazette. Mail  
 them to: The Gazette/TGHNA, 3735  
 Connecticut, St. Louis, MO 63116 or  
 email slangan@stlnet.com. TGHNA  
 General Meetings are held at 7:15PM  
 on the 4th Tuesday of each month  
 (except Dec) at the First Church of  
 Divine Science, 3617 Wyoming.

### Restaurant Review

By Tim and Debbie Akin

**K**ing Louie's is one of our favorite restaurants in St. Louis. Everyone we have recommended it to say the same thing - "We thought it was going to serve bar food!" That reaction is usually a result of the out of the way location and the look of the building's exterior. The building was constructed in 1915 by the Stifel Union Brewery as a hospitality room. King Louie's has transformed it into a warm comfortable atmosphere for fine yet relaxed dining. The bar area was built by Brunswick-Balke-Collender of Chicago and is a very pleasant place for a before or after dinner drink. Friends have told me that it is a great place to eat if the restaurant is full.

We have been to King Louie's on several occasions and have found the menu items to be very tasty. Appetizers such as the Silky Elephant Garlic-Yukon Gold Potato Soup or the Grilled Sourdough with Marinated Artichoke Hearts are a great start to the meal. The King Louie's Salade is a good pick if you are in the mood for salad as a meal. The pizzas are gourmet and go very well with a Caesar or Petite salad. The menu changes frequently so you never know what surprises await you.

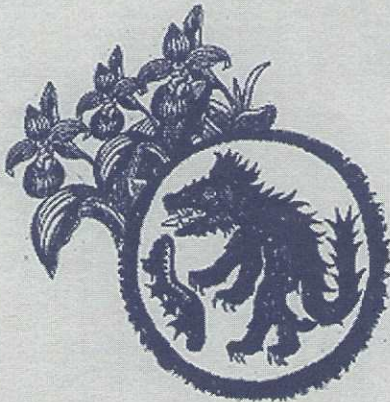
On our most recent visit I started with the Black Bean soup with Herbed Goat Cheese, Sun Dried Tomato and Toasted Pine Nuts. It was very flavorful and not at all like the Southwestern

black bean soup I am more familiar with. For the main course, I tried the Sautéed Walleye Pike with Haricots Verts Amandine. I had to ask what "Haricots Verts" was and was told they were green beans. However, when I ate them they were Haricots Verts not green beans. They were wonderful. The Walleye filet was crispy on top and perfectly cooked on the inside. Debbie tried the Chargrilled Strip Steak with Fontina-Potato Casserole. The steak was so tender a knife was hardly necessary. The potato casserole had a creamy Fontina cheese sauce between the layers that made it melt in your mouth. We finished the meal off with a Warm Pineapple Upside-Down Cake with Butterscotch Sauce and French Vanilla Ice Cream. It



was a great treat and, like all the dishes at King Louie's, the presentation was just as satisfying as the taste.

King Louie's is located at 3800 Chouteau on the corner of 39th and Chouteau. You can reach them at 865-3662. They are open Monday through Friday for lunch from 11am-2pm. Dinner is served Monday through Thursday from 5pm-10pm and from 5pm-11pm on Friday and Saturday. They are closed on Sunday. Reservations are recommended on the weekends although it is worth a try just in case you can sit at the bar. A fireplace is lit on chilly evenings but reservations are almost always required for these tables even on a weeknight. Dinner entrees range from \$10 to \$25. This represents a good value for the quality of food and service you get at King Louie's.



Celebrating  
 Henry Shaw's  
 200<sup>th</sup> Birthday



## What's Coming up at the Garden?

### Tropical Treasures: Orchids of the Ancient Aztecs

*Now through March 12*

### GardenExpo

4 Weekends: April 22-23 & April 29-30,  
 May 6-7 & May 13-14

During National Poetry Month in April, the Garden Gate Shop offers a  
 15% discount on all nature poetry books for adults and children.



Missouri  
 Botanical  
 Garden

4344 Shaw Blvd., St. Louis MO 63110 • For more information call (314) 577-9400 • [www.mobot.org](http://www.mobot.org)



# News from the President

Mar 2000

By Cheryl Jones

This year's proposed events calendar is pretty ambitious! We thought we would give you a variety of events to choose from. We've included everything from bowling to jazz to baseball.

Of course, there are always obstacles in planning such a heavy albeit fun schedule. Usually, money becomes a problem, but we seem to be in pretty good shape as long as we strategically plan fundraisers. Our biggest challenge is to attract enough volunteer "units" to make sure the events are fun and not stressful for those involved.

A volunteer "unit" is a volunteer contribution to one event. One person could be three "units" if they work three events during the course of a year. We need about 125 units this year. Hopefully there are enough different types of events that everyone can find something they enjoy to work on.

If we don't get enough volunteers this year, we may reschedule some events for next year. Please let us know if you have any interest in working with us to accomplish our goals. With your help, we would love to make this the most fun year we've had in some time. Call 772-5982 for more information.

## Here's the proposed agenda for Year 2000:

**Feb: Membership month.** Goal: to get enough members to have the money/manpower to complete our ambitious

schedule!

**Mar:** Classical/Jazz Concert and Local Artist Art Fair

**April:** Operation Brightside Blitz Annual House Tour

**May:** Annual Plant Sale with Rock 'n Roll and 60's Soul Band

**June:** Concession Stand at Busch Stadium

**Garden Awards**

**July:** Tower Grove Heights Night at a Baseball Game

**Aug:** National Night Out Block and Neighborhood Party

**Sep:** Annual Garage Sale

**Oct:** Fun Night Out Bowling Party Operation Brightside Barbeque

**Nov:** Pot Luck Dinner and Good Neighbor Awards

**Elections**

**Dec:** Holiday in the Heights: Concert, Luminaries, Neighborhood Party

We project that we will have enough money to cover all of these events. Other possibilities include participation in the Festival of Nations, the PRIDE celebration, the balloon event in Tower Grove Park, etc. We are also considering creating Tower Grove Heights apparel and paraphernalia to sell at various citywide events. We cannot even attempt this schedule without adequate volunteers.

We need a commitment of 125 volunteer units this year to complete this schedule!

## OPERATION BRIGHTSIDE

Saturday April 15 is not only tax day and house tour day but also the day for that annual rite of spring, Project Blitz. Get ready to pitch in and clean up our neighborhood. The emphasis of this year's campaign is personal responsibility. Litter is one problem individuals easily can solve. The goal of the event is to clean up the front and back yards in the neighborhood as well as the alleys. Extra trash trucks will be emptying dumpsters and collecting trash from 10 AM to 3 PM.

**Remember to place—**

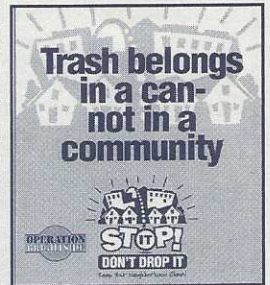
**Small items in Trash Dumpster.**

**Be careful NOT to overload.**

**Grass, leaves and twigs belong in the "Yard Waste Only" Dumpsters.**

Large items such as furniture belong directly behind your home at the edge of the alley. Make sure bulk items are at least 4 feet from any Dumpster and do not block the alley. Items placed on private property cannot be picked up. Branches, more than 2 inches in diameter and no longer than 3 feet, must be bundled and placed with bulk items for collection.

Large appliances, tires, car batteries and motor oil will be collected but separately from other bulk items. These items will be recycled.



## FREE CHECKING

Why even consider a checking account that steadily chips away at your balance? At Commerce, we offer totally **FREE CHECKING**.

- No monthly fees
- No minimum balance
- Unlimited check writing

Just apply for a no-annual-fee Special Connections VISA® or MasterCard®

Tower Grove Banking Center  
3134 South Grand  
746-8211



**Commerce Bank**  
Member FDIC

Personal Account  
Only

10 LB. CHICKEN WINGS .....	\$ 41.70
50 PC. FRIED CHICKEN .....	\$41.70
100 PC. FRIED CHICKEN .....	\$83.40
SLAW (GALLON) .....	\$9.00
BAKED BEANS (GALLON) .....	\$11.00
POTATO SALAD (GALLON) ....	\$12.00

**BANQUET ROOM**  
Now Available  
**40-100**

**LUNCH & DINNER 7 DAYS**  
**2100 Gravois • 776-7292**



# STREET BEAT

By Don Hardin

## A Snowy Day on Grand South Grand

Neither rain nor snow, nor hail nor dark of night shall stay this reporter from making his appointed rounds. Actually, the snow



didn't keep Grand South Grand from being

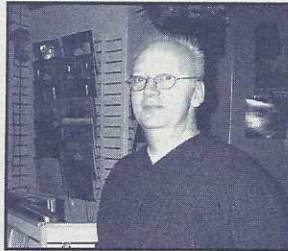
the busy bustling place it always is. I talked with several people who work on Grand South Grand and asked them:

"What is your favorite place on Grand South Grand - other than your own business?"

I first talked with Sara at REGENERATION. While I was there I bought a



great vintage silver silk headscarf for my mom for her 84th birthday. Sara's favorite place was TFA, because of their amazing collection of "neat stuff".



Braving the elements, I moved along to ON THE GRID, I met George who lives in the area. His

favorite "hangout" was CHEAP TRX.

Next was a fun visit with Sasha (who sings with a local band) at CHEAP TRX. She had a hard time choosing just one spot on Grand, but finally chose MOKABEES as the place to see and be seen.

Dashing through the snow, I

went next to PLANET PROUD. Elaine shops a lot at REGENERATION (which is right next door). She likes the amazing collection of Vintage "goodies" to be found there.

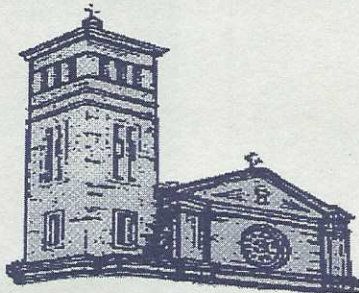


My last stop was at

MOKABEE'S. I chatted with Mo (she's the MO in MOKABEE'S). She couldn't limit her favorites to just one and gave me the following list of favorites: TFA, MANGIA, PLANET PROUD, CHEAP TRX, AND CURVE OF THE EARTH.



## St. Pius the Fifth Church and Parish School



### Mass Schedule

Saturday - 4:30 pm

Sunday - 7:30 & 10:00 am

### Parish School

Excellent educational opportunities

18-1 student/teacher ratio

Grades K- 8

772-1525 Rectory - 773-8770 School

[www.stpiusv.org](http://www.stpiusv.org) - [stpiusv@msn.com](mailto:stpiusv@msn.com)

3310 S. Grand Blvd., St. Louis, MO 63118

## AMERICAN INDIAN CENTER OF ST. LOUIS



4115 CONNECTICUT ST.  
ST. LOUIS, MO 63116  
314.773.3316



# Arts In The 'Hood: Michael Renner, Freelance Jazz Writer

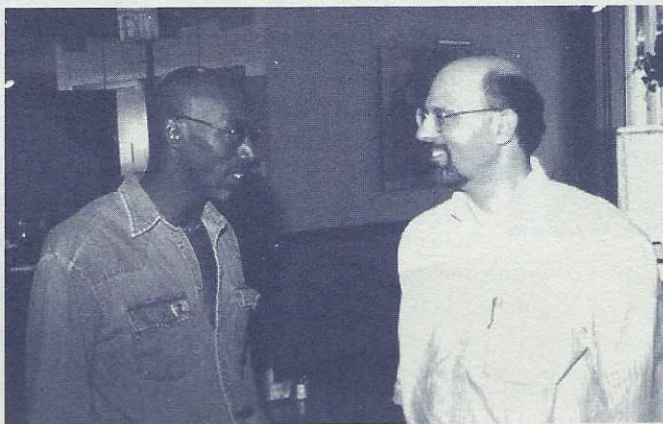
by Suzanne Rhodenbaugh

**Y**ou may know Michael Renner as your neighbor on Juniata Street, the guy in the baseball cap who looks like the late poet Allen Ginsberg, drives a maroon Saab, and is more or less a neighborhood resource for grilling at summertime barbeques, evaluating wines, and finding what's funny in nearly every situation. Or, you may know him as the Prez-Elect of Tower Grove Heights Neighborhood Association, our 2001 leader for the 'hood. You may also know him as the husband of Meg Renner, who is the Midwest Center Director for the Rensselaerville Institute, a New York-based firm consulting on management for non-profit organizations and government agencies.

Maybe you know Michael for his day job: for most of the years since he received his Master's of Social Work from Washington University in 1982, he's been with the Missouri Planning Council for Developmental Disabilities. Council employees are staff to a 22 member voluntary board which plays an advocacy and advisory role to the state, and seeks, overall, to increase community-based options for people with developmental disabilities. In Michael's words, "We're paid to be the thorn in the rear of the disability services systems." — Michael does like a metaphor or a punchy turn of phrase, for he is, after all, also a music

critic, occasionally of blues, pop, rock, even country, but most often of jazz.

This sometimes offhand-seeming jokester is passionate and articulate about jazz, "a brooding cerebral art form, in a way, but something it's still possible for people to enter," a music he loves for its fluidity: "the whole basis of it is



**Michael Renner, right, talks with Thelonius Monk, Jr. at Jazz at the Bistro after a 1999 concert.**

improvisation."

As a kid he tried classical guitar, and as an adult he took saxophone lessons, but he's not a trained musician. His knowledge of jazz is largely self-taught, mainly from close listening and reading. His jazz interest began in high school in Kansas City, where he grew up. There he was spurred by a music appreciation class at the Jesuit high school he attended, and by a principal who made his office a kind of after-school listening post for all kinds of music. In college at University of Missouri at Columbia, he started making the mental connections which came from delving into jazz and its history.

Columbia, Michael says, is actually much more a jazz market than either St. Louis or Kansas City. ("It has the only all-jazz community-based concert series in the state.")

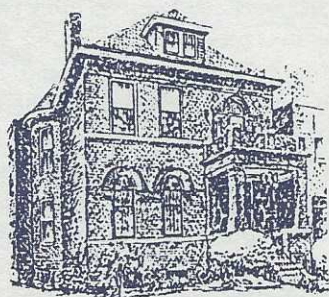
It was while living in Columbia that he began his work in jazz. He started writing CD reviews for arts and entertainment weeklies; serving as a disc jockey for a weekly jazz radio show; and writing previews for the Columbia Daily Tribune of jazz musicians coming to town.

In 1994 he moved back to St. Louis, and approached the St. Louis Post-Dispatch about reviewing. Since then, two or three times a month he's freelanced for the paper reviews of live performances and CD's, interviews of jazz musicians, and features on jazz. He also still occasionally writes for the Columbia paper, and

for the national magazine *Jazziz*. He says he tries very hard to be descriptive rather than critical in the judging sense, because he wants to separate his perception from that of an audience. For example, he says, he might be bored by an arrangement or a selection he's heard many times, but this doesn't mean it wasn't finely-done and/or exciting to an audience for whom it's new.

Asking him his favorite jazz is a bit like asking someone who's scanned 1000 years of English literature if he's read any good stuff. Michael answers, though: "jazz that uses different instrumentations and draws from different influences, such as, right now, Latin American and Middle Eastern." He mentions then Blue Note label artists — Dexter Gordon, Joe Henderson and Horace Silver — and Duke Ellington and the 1920's work of Louie Armstrong. To hear jazz in St. Louis, he suggests Jazz at the Bistro, the Webster University Jazz Series, The Sheldon, The Delmar Restaurant and BB's Jazz, Blues and Soups.

Meanwhile, back in the 'hood, you've got to figure even the names of the Renner cats are heavily jazz-influenced: there's the lively Cricket, and the elusive Shadow.



## THE WINTER HOUSE BED AND BREAKFAST

Hosts: Kendall & Sarah Winter

Give Your Out-of-Town Guests a Home  
Away from Home

3522 Arsenal Street  
Saint Louis, Missouri 63118

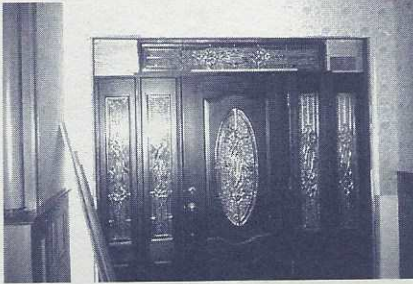
(314) 664-4399



# THE BROOM FACTORY HOUSE

By Rich Iezzi

While walking or driving on the 3800 block of Arsenal, you can't help noticing an unusual site looming on one of the highest elevations in Tower Grove Heights. 3826 Arsenal is the former "broom factory" site and looks like a manor house that was plopped down on a residential street. The house sits sideways on the lot, giving it the 'mansion' look that you expect to see on Utah Place.



Built around 1900, this property has always been a source of mystery for those of us moving into Tower Grove Heights. Most of the back yard was taken up by a large brick building (the broom factory) until it was torn down several years ago. We never knew where the broom factory name came from or why the house was built the way it was. Reduced to a rooming house with 7 apartments, the house changed hands about five years ago when a new owner tried to make it a 'single'. After the money ran out and foreclosure took place, the house went to sleep.

When Phil Duckwall first saw the house, it was like finding a lost dog—he didn't really want it but didn't want anything bad to happen to it. When he 'toured' (there was always an unsecured door) the house, he counted 7 bathrooms, 7 kitchens, 7 furnaces, etc. At one time there was a center staircase and fireplaces in both east and west parlors. Now,

anything redeemable was gone and the house was filled with trash.

But Phil needed a house. He was engaged to Sandy and they needed a place to call home. After some negotiations, Phil announced that he was the owner of the "largest piece of derelict property in Tower Grove Heights". After removing countless dumpsters of trash, Phil and Sandy started planning the project.

To be able to 'see' the house, an open floor plan was created, limiting the number of rooms to about eight. As you enter, you're greeted by a sea of oak flooring and Kirkwood Stair Company's finest work. The center staircase is spectacular and looks five feet wide. It runs to the third floor, letting you look all the way up or down.

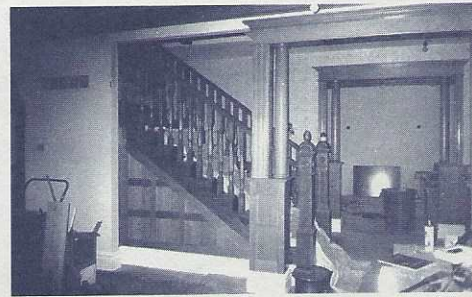
The rooms on either side of the stairs are enormous. The entire East Side of the first floor became a room with two fireplaces, bay window and beamed ceiling. Tasteful uses of wainscoting and doorway arches provide an Old World flavor. The West Side of the first floor features oak colonnades and more beamed ceiling work in the living room with paint colors that warmly compliment the overall design. The kitchen is off a central hallway and located behind the living

room. It glows with cherry wood cabinets, a center island, and looks as big as a county apartment. Off the kitchen, a room that forms a small west wing is now used as a breakfast



room. It's perfectly sized and the hidden location makes finding it a surprise.

One of the highlights of the first floor is the conservatory. It's accessible from the kitchen and is larger than most of our dining rooms. More than a greenhouse, it's heated with a gabled glass roof decorated with Victorian crest work that caps the entire peak. A stairway leads from the conservatory to the backyard, or gardenscape, as Phil calls it. It's safe to say that every square inch between the survey lines at 3826 Arsenal has been planned and planted, including the new soil covering the concrete roofed garage.



Ascending the stairs, three main rooms and a room-sized bathroom make up the second floor along with the always-coveted laundry room.

The second floor view of Tower Grove Park is fabulous. Zoned heating and cooling handle all three floors and I found a really cool second floor gas fireplace that fired up with the flick of a switch.

Take the oak stairs again to third floor and discover another incredible park view in a room with no walls. It's as big as a starter home and but with ten foot ceilings. There's actually a possible fourth floor hidden in the ceiling but time and money didn't permit its appearance.

The house has to be happy, being reincarnated in a new millennium with excited new owners. But does that mean we'll have to stop calling it the broom factory???



**Tower  
Grove Heights  
Homes**

*In the Business of Neighborhood Building*

*Superior quality, custom renovated  
Turn of the century homes in an  
exceptionally fine, traditional  
neighborhood.*

Susie Gudermuth (314) 771-7097

**Urban Living  
with a  
Small Town  
Feel.**



# Lucas Optometry

By Terry Winkelman

Out for a walk one day last fall, I was crossing the parkway on Utah when suddenly my vision blurred and I stumbled in surprise. At first, I thought a tree branch or twig had fallen on my head, knocking my glasses off their perch. Then I realized, my specs had spontaneously fallen apart on my face! An old pair that I wore when rehabbing, they admittedly weren't very well cared for. But I didn't expect them to self-destruct while I was out on a jaunt!

Disoriented and fuzzy without them, I quickened my pace and holding the pieces together headed directly to my eye doctor's office for an immediate repair and cleaning. While there I had a look at the latest styles and a chat with Bill and Pam and Dr. Todd.

I've worn glasses since I was five

years old. And since then shopping for frames was always a big deal—I seldom found anything that I liked that mom, or later, I could afford. When I settled on something they usually looked terrible on me—being the wrong size, shape or color



for my face and complexion.

When I bought my home in the Tower Grove neighborhood ten years ago, I didn't expect one of the benefits would

turn out to be a solution to my spectacle woes.

The second generation of Lucases to practice on Grand, Dr. Todd Lucas is a neighborhood treasure. In addition to his medical practice, his office is a source of great looking frames—affordable and accompanied by astute selection advice.

Todd's father, George, grew up in the neighborhood and established his practice here in the 1920s, moving to the current location at 3165 South Grand in the 1940s, according to Todd.

Todd's brother Tim and their father set up a second shop in South County in 1982. Today, Lucas Optometry includes a third office in Ballwin, run by Todd's wife Cynthia, an optometrist whom he met while a student at UMSL.

Todd, now 39, has worked at the South Grand office since he was 13 years old. Office manager Pam Chase has been with the company since 1990, and optician Bill Maypiel since 1995.

"Most of our clients are from here or originally from (this neighborhood)," says Todd. "It's not uncommon for me to see three generations of the same family, which is pretty neat."

When the office underwent a gut rehab in 1985, "everybody was so nice about it," recalls Todd. "It was just a dusty dirt hole while in progress, but most people around here have been through it so they were very understanding."

Lucas Optometry carries a range of frames from brands such as Luxotica, Calvin Klein, Armani and Polo at very good prices, in my experience. Ranging from \$29 to \$200, most average between \$90 and \$140, which is a good deal for stylish, quality brands.

"We have a lower mark up on our frames than other stores," explains Todd. "Our competitors' markup is high so that they can put it on sale." Lucas Optometry doesn't run sales. They do accept several health insurance plans, including Vision Service Plan, Vision Benefit of America, United Healthcare, Blue Choice, Healthcare USA, Care Partners, Partners HMO, GHP and Medicare, although they don't fully accept assignment on all of these listed.

The company doesn't advertise it, but because it has a lens lab on site, can have your "glasses ready in an hour" in an emergency!

## Kurt E. Wolfgram Attorney at Law

Personal Injury  
and Commercial Litigation

4500 West Pine, suite 300  
St. Louis, MO 63108

telephone (314)361-2700  
fax (314)361-2052

# Lucas Optometry, Inc

## TODD N. LUCAS, O.D.

Eye Examinations • Contact Lenses • Eye Glasses  
**3165 South Grand Blvd.**  
**St. Louis, MO 63118**

*Participatory Provider for*

Blue Choice  
Group Health Plan  
Prudential  
and Many Other Vision & Eye Health Plans

Office Hours By Appointment

(314) 772-3737



# The Adventures of Peter Possum

by Rick Clinebell

He was very small, about the size of a kitten, and very cute when we first met Peter. He had come to the various flotsam and jetsam of our dinner leftovers, be they steak bones, catfish skeletons, spaghetti, vegetables, rice or whatever, which we leave on an old tin pizza pan on the deck for the animals and birds. (We still haven't found anything that some backyard critter won't eat.) There also used to be two young raccoons that came for the handouts, but we haven't seen them in awhile.

Of course, the adult possum we see now may not be the same one that came when kitten-sized several years ago, but it is fun to think that that is so. Possums are the only North American marsupials, and related to the kangaroos of Australia. They are primitive mammals, and the brain cases of their skulls are extremely small. They are nevertheless very cute, though as with all wild mammals, you shouldn't touch them as many small mammals can carry rabies. But it is fun and safe to feed them at your back door and enjoy seeing them once in awhile.

Possums are omnivores, taking both animal and vegetable food items. In fact, one of the showiest native small trees, the deciduous holly or possumhaw, is named

for them. Possums eat the bright red berries, and the seeds survive their transit through the possum and are dispersed in the scats (droppings) of the possums. Much like flowers being attractants for animal pollinators (and not for human enjoyment), fruits are gadgets to entice herbivores to

plant their seeds far from the parent plant after traversing the digestive tract of the herbivore (and not for human consumption).

One of the reasons we feed Peter Possum is that there are no possumhaws in Tower Grove Heights. Well, actually there are five little ones in a pot in the

backyard. Steyermark, who wrote the encyclopedic flora of Missouri, commented that possumhaw seeds are poor germinators. This is actually not true, but the seeds do require "double dormancy," which means they must go through at least two winters in the ground before germinating, at least if they have not been through a possum. Maybe someday these little seedlings will provide Peter with some native gourmet possum food. The possumhaw only grows about 15 feet tall, and is an excellent native ornamental.

Three other native shrubs and small trees are beloved by possums and their seeds are also dispersed in the gut of an



opossum, raccoon or similar critter. The first is the pawpaw, which has fruits that are edible and mildly reminiscent of bananas. These are also fine landscape shrubs, though they can achieve a height of about 30 feet.

The next, also dispersed by Peter Possum and his kin, is the native persimmon, which, like the native pecan, is smaller than the commercial varieties, but just as tasty to both humans and possums. The last possum-dispersed shrub that comes to mind is the hawthorn, of which one, *Crataegus mollis*, is dwarfish like the possumhaw.

These are all outstanding landscape plants, and are in various stages of development here on Hartford Street. They are also all somewhat miniature in stature, making them excellent candidates for an urban pantry for our furry and feathered friends.

## TATTLER

By Elizabeth Braznell

- Congrats to Brian Marston of the 3800 block of Connecticut! He was selected as one of the Top 100 Leaders for the Millennium by the St. Louis Post-Dispatch! Brian is the immediate past president of the City promotion/policy group Metropolis.

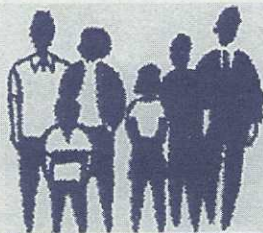
- Tim Akin of the 3100 block of South Spring jetted off to South Africa, courtesy of his employer as a thank-you for outstanding sales, but not with his wife! Debbie tumbled off her horse in January and the resulting fractured wrist needed surgery. So neighbor Jay Rosloff, of the 3800 block of Juniata, filled in for four days in Sun City!

- Did you see Rams' fiends Dan Hill and Rodney Dillon's home on the 3700 block of Juniata featured on Channel 2? Decked out in Rams finery, the house was twice the site of broadcasts. After the Super Bowl, Rams fans honked as they drove past. By the way, their Airedale puppies are adorable!



- Look for new planters in the center lane of Arsenal from Kingshighway to Grand this spring. Alderman Marge Vining says improvements will start as soon as the weather warms. Planters will have built-in watering systems and will feature plants to carry the beauty of Tower Grove Park into our neighborhood.

*A Place  
for  
Everyone*



**Oak Hill Presbyterian Church**  
**Corner of Oak Hill & Connecticut**

4111 Connecticut, St. Louis MO 63116 - Call us at 664-5525  
Sunday School 9:15 am, Worship 10:30 am

Deco 40's - Rockin' 50's - Groovy 60's

**T.F.A.**  
The Future Antiques



3203 South Grand  
Ph: (314) 865-1552

E-mail TFA50s@AOL.com

Distributor of DAYSTROM



# Statistics

By Brian Marston

Here are some statistics I gathered from the 1990 US Census Summary Tape File 3 along with my own conclusions about what the numbers mean. If you're interested in going on a data mining expedition of your own, check out <http://oseda.missouri.edu/> and <http://www.census.gov/>.

## Total Population

St. Louis County: 993,529  
St. Louis City: 396,685

CONCLUSION: The civic and cultural hub of our region is far from being the population hub.

## Persons Per Square Mile

St. Louis County: 1957.05  
St. Louis City: 6406.74

CONCLUSION: Urban sprawl should be called suburban sprawl.

## Median/Average Rent

St. Louis County: \$482/\$506  
St. Louis City: \$342/\$356

CONCLUSION: On average, it's cheaper to rent an apartment in the city.

## Median Home Value

St. Louis County: \$82,600  
St. Louis City: \$49,700

CONCLUSION: On average, it's cheaper to buy a house in the city.

## Vehicles Per Person of Driving Age

St. Louis County: .88  
St. Louis City: .58

CONCLUSION: Car culture reigns supreme in the county with its attendant environmental ills.

## Persons Who Drive Alone To Work

St. Louis County: 84.26%  
St. Louis City: 66.46%

CONCLUSION: Public transportation and carpooling are more popular and viable in the city.

## Median Age

St. Louis County: 34.7  
St. Louis City: 32.9

CONCLUSION: The city attracts a younger population than the county.

## Persons By Race

St. Louis County:  
White 84.2%  
Black 14.0%  
Asian & Pacific Islander 1.4%  
American Indian, Esk., Aleut. 0.2%  
Hispanic (any race) 1.0%

St. Louis City:  
White 51.0%  
Black 47.4%  
Asian & Pacific Islander 0.9%  
American Indian, Esk., Aleut. 0.3%  
Hispanic (any race) 1.2%

CONCLUSION: There's a reason the mass exodus to the suburbs is sometimes referred to as white flight.

**BONUS STATISTIC:** According to a study by State Farm Insurance (<http://www.statefarm.com/media/danpress/missouri.htm>), five out of ten of the most dangerous intersections in the STATE are in West County. None of Missouri's ten most crash-prone intersections are in St. Louis City. Crime statistics don't tell the whole story of personal safety, especially when you consider that most violent crimes are perpetrated by relatives or acquaintances of the victim. One of the most dangerous places to be in our region is behind the wheel of a car in West County.

## April 1 is Census Day—And That's No Foolin'!

By Elizabeth Braznell

The census is a count of all U.S. residents taken every ten years. It has huge consequences for our City and our neighborhood.

Census data is used to distribute over \$180 billion dollars in federal funds—funds that are used for schools, neighborhood improvement, streets, crime prevention, etc. As population leaves the City, so does federal money. So it's important that each person in the City be counted, because each uncounted person means fewer federal dollars.

And the census has direct effects on our neighborhood. Businesses looking to move into our area also look at census information to see if there's enough population with income to support their restaurants, stores, or shops.

Organizations looking for grant money use census data to establish the need for services to funding agencies. Healthcare organizations use census data to determine where to put clinics.

Starting April 1, census forms will be delivered to each household. The U.S. Constitution mandates confidentiality of individual information for 72 years.

No one—not the FBI, the police, the Department of Immigration, not even the President—can see your census form. This is so that every resident, even illegal residents, feels safe completing the form.

If a household does not complete and return the census, a census worker will go to the house to gather the information. So when your packet arrives, please fill it out completely and accurately.

There are over 1,000 jobs available. If you'd like to work with the census, call 821-1971.



## OAK HILL TRUE VALUE HARDWARE & PAINT CO.

4100 CONNECTICUT ST. AT OAK HILL  
776-0741

---

### 10% OFF WINDOW/SCREEN REPAIRS

Present This Coupon With Windows or Screens To  
Be Expertly Repaired For A 10% Discount On  
Labor & Materials.

*Coupon expires 4/1/00 (TGHNA)  
Not applicable to work in progress  
Oak Hill Hardware*



# Bicycle Cops

By Erin O'Reilly

Heather Folle and Ron Bergmann are the "bicycle cops" you see riding around on those Smith and Wesson mountain bikes.

For the last year they have been patrolling the business district on Grand between Arsenal and Utah and responding to calls in the TGH neighborhood as needed.

Heather has been with the police force for 6 years and a "bicycle cop" for 1 year. She is originally from Minnesota and always wanted to be a policewoman but never thought she would be a "bicycle cop". She loves it and is glad she was chosen by her commander for the job!

Ron has also been with the police force for 6 years, and is a 3rd generation policeman. His father and grandfather both have been a part of the police force. He grew up right here in this neighborhood and feels right at home pedaling down these streets!

Before Heather and Ron started the bike patrol job they completed a 40-hour training course and were certified by the "International Police Mountain Biking Association". Their bikes are equipped with all the necessary safety and comfort equipment such as 24 speeds, shocks, padded seats, saddlebags, tool kit, and reflectors. They wear helmets, gloves, sunglasses and dress according to the weather. Ron likes the benefit of wearing shorts in the summer, but complains that his glasses steam up in the cold weather when he wears a facemask to prevent windburns.

They patrol on the day shift as a team and are equipped with a police radio, cell phone and all the other necessary police equipment except a siren. They are grateful to the Grand South Grand business association for supplying them with several needed items to make their job easier and safer.

The types of calls for service they get ranges from nuisance crimes like panhandling, littering, and public drunkenness/ disturbance to traffic crimes (yes, they do give traffic tickets!) and responding to calls from 911 that are in this neighborhood. They also help

monitor Roosevelt High School. at dismissal time. Generally, they maintain a "high visibility patrol" in the Grand South Grand area to deter crime in addition to the regular 3rd district police coverage of the area.

They work closely with the business district, neighborhood association and Barbara Potts (our Neighborhood Stabilization Officer). Their new substation is located at Grand and Wyoming above TFA.

Here are some facts that I learned from them:

#1 The 3rd district is the largest and busiest police district with approximately 90,000 people extending from Kingshighway east to the river and from

Chouteau to Chippewa.

#2 There are approximately 1600 police working in the city of St. Louis.

#3 The centralized police station is at Arsenal and Sublette near the State Hospital.

#4 "Bicycle Cops" got started 10 years ago and there are 2 on Cherokee street, 1 at SLU, 1 at Fanning school and another at Siegel school in addition to Ron and Heather on Grand.

Ron and Heather offer the advice to call 911 for any suspicious activity in the neighborhood. They say it is better to call even if you are unsure, rather than just let it go and risk occurrence of a preventable crime. I would not want to be "on their bikes" today—it's a cold and blustery day! If you see them give them a hello—we want them to feel welcome around here!



Once Upon A Vine



Once Upon A Vine, is a cozy Restaurant & Wine Shop located in the Grand South Grand Business District.

Inside you will find:

- Fine wines from all corners of the world
- Regional American cuisine
- Fresh selection of Kaldi coffees and gourmet treats

Join us for our  
Spring Wine Tastings

February 18th - Syrah wines  
March 9th - Pinot Noir  
April 13th - Merlot  
May 11th - White wines



3559 Arsenal  
St. Louis, Missouri 63118  
314.776.2828



## "BIENVENIDOS"— WELCOME By the family of La Casa de Miguel

We would like to introduce ourselves at "La Casa de Miguel" to our neighbors here in Tower Grove Heights and tell you a little story about ourselves and the origin of our new store.

We are proud to be part of revitalizing our city neighborhoods by bringing back shopping alternatives to people who live here in the city. We as a family have traveled to Mexico several times a year. We all have had other career directions but always wanted to follow our passion of having a unique gift shop. It has been several years in the making before we

were able to leave life long jobs to pursue our passion, but it has finally come to pass.

We have a special interest in the extraordinary talents of the Mexican people and the arts and crafts they produce. Our store's theme is getting to know a little bit of history of the handcrafted art we import from all regions of Mexico so our customers get a sense of what went into the making of the unique gift they may be selecting.

We chose this area due to the diversity of the community and have had overwhelming support from all our neighbors in the area. If you would like to

enjoy a little trip to Mexico, browse at our store. From the feeling you get in the store, you may either be reminded of past vacations or get an urge to plan a trip to Mexico. La Casa de Miguel is located at 2237 South Grand and is

open Tuesday to Saturday from 10 AM to 6 PM.



## Tower Grove Park

By TGP Staff

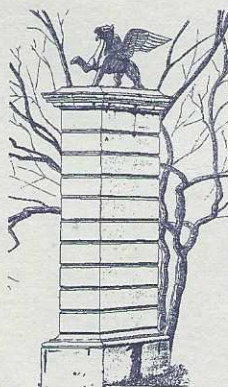
The weather is beginning to clear and we are preparing for a wonderful spring filled with beautiful flowers, budding trees and volumes of activity. This year has special meaning for us at Tower Grove Park as it is the 200th anniversary of Henry Shaw's birth. During his lifetime Henry Shaw was a great philanthropist who devoted a great deal of time and money to many organizations in St. Louis. 200 years later his legacy is still growing strong through institutions such as ourselves, the Missouri Botanical Garden, and the Missouri Historical Society. The Park along with these institutions are dedicating this year to honor Shaw's accomplishments.

The Friends of Tower Grove Park have been busy in our "down" time planning events to entertain and inform you. Among the events planned is the Friends Lecture Series. February marked the beginning of the series with Dr. Leonard Ott who discussed the role of Henry Shaw in the performance of Classical Music in St. Louis. The Lecture Series continues this month with Dr. Carol Grove and her insights of Henry Shaw's Contribution to the Architecture of St. Louis. The culmination of the Lecture Series will be a lecture by Harold Bloom, the premiere American scholar of Shakespearean literature. Other events include concerts throughout the spring and summer a Watermelon Feast in August, and the 3rd Annual Tower Grove Park Balloon Race in early September.

We look forward to a wonderful summer filled with activities and hope that you enjoy the Park and all of its amenities this year and for many years to come.

## Walking in Tower Grove Park

by Don Hardin



*Excerpts from a book  
by Robert E. Knittel,  
illustrations by  
Daniel J. Wismann*

"It should be clear from the onset that there is walking and then there is walking, strolling, ambling, watching." "The first is a way of getting somewhere." "The second is a means to no end." "The means is the end." "The art of the second is what I am concerned about."

"Victorians understood the art." "They created huge canvases, strolling parks, upon which individuals ambled in daily

and seasonal patterns." "The pathways, swards, and water sides formed a web that held countless personal rituals of walking."

"Tower Grove Park is a strolling park, and was designed that way by Henry Shaw and his associates." "Although some may come to play ball or tennis, or just picnic, the true beauty and genius of the park is realized through walking it, not only along the paths, but just walking wherever your fancy takes you."



What other shop has

Accessories & Gifts

so many things that

Interior Design

are so much fun?

Extraordinary Flowers



Your home is more than where you live — it's who you are! Botanicals on the Park's interior design services, along

with our unusual selection of home furnishings and accessories, help you reflect your unique good taste by creating rooms that are beautiful, comfortable and elegant. And at Botanicals, excellence is surprisingly affordable.

**BOTANICALS**  
ON THE PARK

Everything we do adds beauty to your life!

3014 South Grand Blvd • Saint Louis, Missouri • 314-772-7674



## Tower Grove Heights Neighborhood Association

Monthly meetings 7:15 PM on 4th  
Tuesday, First Church of Divine Science,  
3617 Wyoming

President: Cheryl Jones

President Elect: Michael Renner

Past President: Elizabeth Braznell

Secretary: Diane Hurwitz

Asst. Secretary: Jennifer Florida

Treasurer: Patty Schneider

### Committee Chairs

**Block Representatives:** Jill Nissen

**Fun & Fundraising:** Jeffrey Blunt

**Gazette:** Sara Langan

**Membership & Social:** Robert Jones

**Neighborhood Safety:** Need

**Representative**

**Physical Improvements:** Mark Abbott

**Promotion & Marketing:** Amada Doyle

**Tenant Committee:** Jeff Muse

### Block Representatives

3600/3700 Arsenal

J. Andrew Habernern

Margaret Prichard

3800 Arsenal

Elliott Blevins

Fredric Rissover

3600/3700 Hartford

Gretchen Arnold

3800 Hartford

Jennifer Florida

Joe Thele

3600/3700 Juniata

Jane Cochran

Jill Nissen

Robin Vannoy

3800 Juniata

Lucinda McNary

3600/3700 Connecticut

**Need Additional Representative**

Sarah Griesbach

3800 Connecticut

Curt Gilker/Sherry Taylor

David Nothmann

3600/3700 Wyoming

Bob Walker

3800 Wyoming

Pat Strawn

Linda Fick

3600/3700 Humphrey

Sue Clavin

Mary Fazholz

Susan Freedman

3800 Humphrey

Susan Huck

Erin O'Reilly

3600/3700 Utah Place

**Doug Harding/ Robyn Schrager**

Mary Dugan

3800 Utah Place

Susie Gudermuth

Veda Lynn

## Top Ten Reasons for Joining TGHNA

By Cheryl Jones

10. You receive a copy of every issue of the Tower Grove Heights Gazette, chocked full of interesting facts and details about the place where you live and the people who live there with you.

9. When someone asks you to join, you can say that you already have.

8. We really need you.

7. You get to vote.

6. It's one of the few really good bargains left.

5. You get a "Buzz Book".

4. You get listed in the "Buzz Book" (but only if you want to).

3. It looks great on a resume.

2. You become eligible to be elected to "the Board".

1. We really, really need and appreciate you!!!!

### Tower Grove Heights Needs You!

Look at the mailing label of this Gazette. If you are a member it will tell you when your membership is due for renewal. If you are not a member-join today and you will be mailed all 6 issues of the Gazette. Membership dues raise more funds for the neighborhood than any other activity. Please show your support for your association and your neighborhood by joining today!

Memberships are as follows, please check ONE:

☐ Individual (1 vote) \$7/yr

☐ Family (2 votes) \$12/yr

☐ Renaissance (1 vote) \$20/yr (Includes a set of TGH note cards)

☐ Business (1 vote) \$25/yr (Includes 10% discount on Gazette Ad for 6 issues)

Please PRINT.

Name

Address

Phone

Email Address

Please check ONE:

☐ Yes, include me in the 1999 Neighborhood Buzz Book.

☐ No, do not include me in the 1998 Neighborhood Buzz Book.

**Return this form and your check  
to: your block representative or  
mail to Tower Grove Heights  
Neighborhood Association, 3735  
Connecticut, St. Louis, MO 63116.**

**TGHNA**

**3735 Connecticut**

**St. Louis, MO 63116**

NONPROFIT ORG.  
U.S. POSTAGE  
PAID  
ST. LOUIS, MO  
PERMIT NO. 3794

*Non-Member – Join Today!*

*Printed on Recycled Paper*