

# Tower Grove Heights Gazette

Volume 19, No. 2

Grand to Gustine

Arsenal to Utah Place

Spring 2008

## ANOTHER JEWEL IN THE CROWN OF TOWER GROVE HEIGHTS

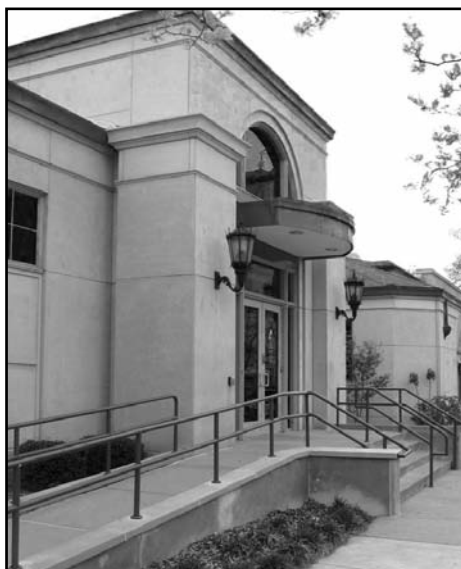
BY JOHN PAPA

On a recent Spring Sunday afternoon the cool, blustery weather offered the perfect opportunity to visit another jewel in the crown of the Tower Grove Heights neighborhood - the St. Louis Public Library Carpenter Branch, at the corner of Utah and Grand Avenues. Carpenter is one of seventeen libraries within the City Public Library System. Equipped with a dedicated, knowledgeable staff, and armed with an impressive array of information and resources spanning all forms of media, the Carpenter Library effectively serves all segments of our community.

The original building was constructed in 1925 on land donated by George O. Carpenter, with funds from industrialist and philanthropist Andrew Carnegie. As with many

public structures of that era, it is beautifully designed and has been well maintained. It now houses a comprehensive, comfortable children's library where a person of any age could spend hours deciding which of the thousands of selections seem most interesting. The spacious, vaulted reading room with its natural light and warm fireplace presents a classic setting to appreciate the power and magic of the written word.

The modern expansion to the facility in 2002 virtually tripled the amount of usable space and includes an audio/visual collection and sixteen public computer terminals, in addition to its traditional library offerings. Current editions of National Geographic or Time are here, as are Country Living, St. Louis House and Rolling Stone.



At the neighborhood Carpenter branch you may select from over 28,000 popular films, 9,000 educational films, 75,000 music CDs (with approximately 9,000 more added annually) and 13,000 audio books. After watching the legend Elvis Presley in "Viva Las Vegas", you may

*continued on page 14*

### IN THIS ISSUE

<i>Another Jewel in the Crown</i> .....	1
<i>Updating Our Bylaws</i> .....	2
<i>Long Meadow Rescue Ranch</i> .....	3
<i>Trees for St. Louis</i> .....	4
<i>Featured Advertiser -</i> <i>VERVE</i> .....	5
<i>Resident Profile -</i> <i>Nels C. Moss</i> .....	6
<i>Rehabbing with Rich -</i> <i>We're Not Buying It</i> .....	9
<i>Streets South - Word Search</i> .....	14
<i>Salute The Sun</i> .....	17
<i>Grand South Grand Tour '08</i> .....	20
<i>Mother's Day Bike Ride</i> .....	23
<i>TGHNA Contact List</i> .....	23
<i>Clip &amp; Save Event Reminder</i> .....	24
<i>Membership Form</i> .....	24

[www.towergroveheights.com](http://www.towergroveheights.com)



*Support Your Gazette Advertisers*

# TGHNA – Updating Our Bylaws

By Robert Ashton- President of TGHNA

Over the past few months, a small committee (John Papa, Mark Froese and me) has been looking at our Association bylaws with a view to updating them to reflect our current needs and situation. OK, bylaws are not the most exciting thing in the world but it is important that these are current and used to run our Association.

As a result of this study and further input from the whole Board, a revised draft of the Bylaws is close to conclusion and will be presented to the membership for approval. At our June meeting we will explain the changes and then a vote will take place at the July meeting as required by our current bylaws.

The basic purpose of the Association is not affected but how we run things on a day to day basis would be. These changes would more accurately reflect our current practice, the reality of electronic communications and our changing needs. Here are some of the key proposals:

1. **Membership:** The current bylaws only allow for individual members who are residents or property owners within the neighborhood. A number of individuals technically outside this definition have made and do still make a significant contribution to the Association. We propose the creation of an Associate membership level to address this. This would be a non-voting level of membership. In addition, we propose formally adding Household and Life memberships which are currently in use.
2. **Election process:** Currently, nominations for officers should be presented to the membership by a Nominating Committee. We feel this is too complex for our needs and propose an “open” nomination process at our October meeting with formal elections taking place at our November meeting.
3. **Board of Directors:** The current rules provide for an Executive Committee of the five elected officers and the Chairpersons of Committees. In addition, there are intended to be another 6 “advisory” board members, including local elected representatives. We propose to simplify this by eliminating the advisory directors and limiting voting rights to the elected officials.
4. **Notice of meetings:** We now have members’ meetings on a regular basis and e-mail, websites and, of course, the Gazette are now a normal part of the process of communications. Therefore, we propose the elimination of the current process that requires formal written communication of each meeting.

Copies of the existing & proposed new bylaws will be posted in early June both on the Yahoo group <http://groups.yahoo.com/group/TowerGroveHeights>) and on our website (<http://www.towergroveheights.com>). “Hard” copies of both these documents will be available at the June meeting. This is an important matter to ensure we have the right mechanisms in place to run our Association. Remember, if you do want to vote at the July meeting you must be a resident or owner within the neighborhood AND you must be current with your membership dues. So, if you haven’t yet renewed for this year, please, do so now so your vote can be counted.



*Tower Grove Heights Gazette*

is brought to you quarterly by:

**FOUNDING EDITOR:**

Janice Nesser

**EDITING TEAM:**

Mark Froese

Kyle & Shannon Froese

**BUSINESS MANAGER:**

Gary Kushinsky

**CONTRIBUTING WRITERS:**

Robert Ashton, Anita Barker,  
Patrick Bost, Kathryn Heitzenroeder,  
Diane Hurwitz, Rich Iezzi,  
John Papa, Carrie Samsel

**PHOTOGRAPHY:**

Steve Liebig, Mark Froese

The Gazette is a non-profit publication published quarterly by the Tower Grove Heights Neighborhood Association. For information concerning advertising rates and layout planning email Gary Kushinsky at [gazette-newbiz@towergroveheights.com](mailto:gazette-newbiz@towergroveheights.com)

Your letters and comments are always welcome at the Gazette.

Mail them to:

**The Gazette/TGHNA**

3891 Utah Place, St. Louis, MO. 63116

or email

[gazette-editor@towergroveheights.com](mailto:gazette-editor@towergroveheights.com)

[www.towergroveheights.com](http://www.towergroveheights.com)

TOWER GROVE HEIGHTS  
NEIGHBORHOOD ASSOCIATION

## MEETINGS

at held at the

First Church of Divine Science  
3617 Wyoming

on

**Tuesdays at 7:15 P.M.**

(except December)

**MAY 27TH 2008**

**JUNE 24TH 2008**

**JULY 22ND 2008**

*Everyone is  
Welcome to Attend!*



# LONG MEADOW RESCUE RANCH



## About Longmeadow Rescue Ranch

Nestled among 165-acres of woodland near Union, Missouri, the Humane Society of Missouri's Longmeadow Rescue Ranch is haven for hundreds of abused and neglected horses, cows, goats, pigs, ducks and other farm animals. The ranch is one of the most comprehensive horse and farm animal care and rehabilitation centers in the country. In addition to animal care, ranch staff provide hands-on humane education experiences for both children and adults. On any given day, as many as 250 animals from throughout Missouri call Longmeadow their safe haven.

Whether they need temporary shelter while they await adoption or have been impounded by law enforcement as evidence in abuse cases, the rescued animals receive the best of care from our dedicated staff and volunteers.

## Adoption Days

Longmeadow Rescue Ranch hosts Adoption Days on Saturdays from 11 a.m. to 3 p.m. If you are interested in meeting our adoptable animals or our Barn Buddies who are available for sponsorship, please visit the ranch during one of these days or call 636-583-8759 to schedule a visit on another day.

## Sponsor a Barn Buddy

Have you ever wanted a Ranch animal of your very own, but one wouldn't fit in your living room? Sponsor a Barn Buddy! Your sponsorship will help feed, board and provide medical care for the animal of your choice.

Sponsor an educational mascot like Amigo, a Miniature Horse, who travels to area schools teaching children how to care for ranch animals. Or sponsor a rescued animal while we search for a permanent home. For the person who has everything, a Barn Buddy sponsorship makes a great gift for holidays, birthdays or other special occasions. In appreciation of your support, the recipient receives a beautiful gift packet that includes:

- A Certificate of Care
- A Photo and Biography of the selected Barn Buddy
- An opportunity to visit the Barn Buddy at the Ranch

For a map and directions to Longmeadow Rescue Ranch, please visit our website at [longmeadowrescueranch.org](http://longmeadowrescueranch.org).



**OPEN 12 UNTIL 4**  
FRIDAY-SUNDAY

# CITY Holidays



*Exclusive custom ornaments*

**2308 1/2 Cherokee Street**  
**314-772-6444** [www.cityholidays.com](http://www.cityholidays.com)



**Mik Wright**  
time & photos  
greetings that provoke





**BOTANIE SOAP**  
all herbal.  
all natural.

**Above the Crowd!**

**RE/MAX**

**GOLD**  
Each Office Independently Owned and Operated

**MLS**

**Kathy Miller**  
Marketing Specialist

DIRECT: (314) 756-6015  
OFFICE: (314) 756-4070 x2015  
CELL: (314) 276-0012  
E-FAX: (314) 756-8415  
EMAIL: KMiller@StLGoldHomes.com  
WEBSITE: StLGoldHomes.com

**RE/MAX**

11400 Concord Village Ave Suite G  
Saint Louis, MO 63123



**Kurt E. Wolfgram**  
ATTORNEY AT LAW

**Personal Injury and  
Commercial Litigation**

[www.wolfgramlaw.com](http://www.wolfgramlaw.com)

4500 West Pine, Suite 300  
St. Louis, MO 63108

PHONE (314) 361-2700  
FAX (314) 361-2052



**Lucas Optometry, Inc**

**TODD N. LUCAS, O.D.**

**Eye Examinations  
Contact Lenses  
Eye Glasses**

**3165 South Grand Blvd. • St. Louis, MO 63118**

*Participatory Provider for*  
Blue Choice Group Health Plan and Many Other Vision & Eye Health Plans

**Office Hours By Appointment (314) 772-3737**

# TREES FOR ST. LOUIS

**Trees in metro St Louis can go through rough times.**

With our changeable weather we can experience thunderstorms with damaging wind and lightning, winter ice storms, and late hard freezes in the spring. These events leave many of us wondering what we should do about replacing our damaged trees.

There are a variety of trees that grow well in the St Louis area. Common trees that are found in the forests of the Ozarks such as oak and hickory also line the city streets. Residential areas of the city are planted with large shade trees.

The type of tree you wish to plant will affect the time to plant. Most trees do better if planted in the fall, but you should verify this because some trees do better if planted in the spring. Good planning before the tree is purchased and put in the ground will save you problems in the years to come.

Trees should fit in with the other plantings you have on your property. Plant the right tree in the right place. Plant shade trees on the side of your house that receives the most sun for maximum benefit. Plant an evergreen for winter protection from cold winds. Check with your local utility for information on planting under or near power lines.

Homeowners can work with the City of St. Louis to be sure new trees are planted and maintained. Each year the City's Forestry Division plants 3000-5000 new trees.

Article by:  
*St. Louis Public Library staff*





## FEATURED ADVERTISER

# VERVE

### A HIGH PERFORMANCE HAIR SALON

BY  
Patrick  
Rossini

The sleek new salon at 3609 Juniata took over one year for Jeff and Julie Lopinot, the husband and wife owners/stylists of Verve, a Hair Salon, to redevelop to a space that was both functional to their requirements and loyal to the original architecture of the building. The result is a modern industrial openness mixed with original elements. Updated colors frame exposed brick throughout while soft bamboo flooring eases the path from the leather sofa reception to the various work stations. Creating a pleasant and relaxing environment.

Three years ago the Lopinots realized they had outgrown their former space at 3208 S. Grand which had been home to Verve since 1989. They have always been committed to the neighborhood so a new space had to be in the immediate area. The search began. Eventually they met with local developer Dave McCreery, who purchased the building at Juniata. A local architect was engaged to help develop the former 2 storefronts into a functioning salon. His whereabouts remain unknown. Now with over 1900 Square feet the staff of 7 stylists can move about with scissors more freely.

Verve means energy, excitement or enthusiasm that an artist or performer puts in his work. For Verve, a Hair Salon it suggests an unwritten mission statement - to present highly skilled stylists offering the best service and products to a loyal clientele. Verve is strictly a hair salon and offers no spa services. The emphasis here is proficiency in hair design. In fact, the stylists at Verve are very versatile and train all around the country to bring the latest styles and methods to St. Louis. There is also at Verve a salon coordinator that will match you to the stylist that will best suite your individual needs. Also, rumor has it that Jeff is experiment-

ing with some really extreme styles in an upper level station closed to the public, and Julie is baking meat pies in a basement kitchen, also closed to the public. But we'll have to wait and see what, if anything, materializes.

At Verve, walk-ins are accepted, but appointments are highly recommended. For a consultation or appointment call 314-771-4700. Hours are Tues, Wed, Thurs; 11-8. Fri; 10-5 and Sat; 9-4. Closed Sun and Mon (baking pies, perhaps?).



Jeff & Julie  
Lopinot

# verve

A HAIR SALON

(announcing our new location!)



3609 juniata avenue  
st. louis, missouri 63116  
314.771.4700

## RESIDENT PROFILE:

### Nels C. Moss

By Anita Barker

In 1963, Nels C. Moss, Jr, his bed-ridden mom and four younger siblings came to live in Tower Grove Heights for the same reasons that have lured many other families over the years: the nine-room house they found on the 3600 block of Humphrey offered the space they needed in a “stable, friendly, and comfortable environment.” Nels’ mother has since died and his siblings moved away, but Nels has continued to live in that same house for these 45 years. It is the home where Nels and his ex-wife raised their four, now-grown children. As Nels points out, “this has always been a good place to

raise children – many families stay in the neighborhood, their children stay, making it a closer-knit community.”

Nels is quick to comment on other advantages of the neighborhood as well. A big draw is the South Grand business district that has an excellent mix of businesses with “great food, great service”, and a diverse range of restaurants and store options. An attorney by profession, Nels served as one of the original group who started the South Grand business district back in the 1970's. In that effort, Nels lent his law expertise to help

*continued on page 11*



voted best mediterranean

- sauce magazine  
- alive magazine

Photo By: K Bish



**aya sofia**  
turkish/mediterranean cuisine

6671 chippewa street  
t: 314.645.9919  
[www.ayasofiacuisine.com](http://www.ayasofiacuisine.com)

dinner: tues - sun  
belly dancing: tues - fri  
happy hour: 5p - 8p

**dinner special:** buy one entree get one free  
tues - thurs between 5p - 7p  
dine in only / limit one per table

take a short walk and...

SIP into something COMFORTABLE™



let the  
**FIRST and ONLY**  
martini experts  
take care of you!!



join us  
on the  
**PATIO**  
all summer



bring in this ad for  
a **FREE**  
appetizer with  
purchase of 4  
martinis/cocktails  
(value up to \$12)



try our... I'm **GOOSED**, Mary!! ...best bloody mary in town!



Monday thru Thursday  
4pm to midnight  
Friday - 4pm to 1:30am  
Saturday - 5pm to 1:30am

NO  
MARTINI  
EXPERIENCE  
REQUIRED



3196 So. Grand 772-0400 [www.ABSOLUTLI GOOSED.com](http://www.ABSOLUTLI GOOSED.com)

J  
U  
N  
I  
P  
E  
R  
  
G r i l l

**Elegant Dining  
located in  
Historic Soulard**

*"One of St. Louis' Best New Restaurants"*

- St. Louis Magazine, Oct. 2005

*"A nifty, cheery little neighborhood place where  
the food reverberates quite effortlessly with  
true bistro style: modest and down-to-earth,  
yet bright with culinary panache."*

- Riverfront Times - March 2005

**Gift certificates and catering available.**

**Dinner** M-Th 5-10, Fri. & Sat. 5-11  
1928 S. 12th Street • St. Louis, MO 63104

**314.621.9195**  
**www.juniper-grill.com**



**It's SPRING! Patio Dining is Back!**  
Enjoy a meal or a drink among the blooming plants.

*Dogs are welcome on the patio.*



**HAPPY HOUR**

**Monday thru Friday • 3pm to 6pm**

**\$1.50 Bud & Bud Light • \$1.50 PBR • \$2.75 Well Drinks**

**Ask About Half-Priced Appetizers**

*Try our hand-dipped shakes and malts.  
10 Flavors! Sundaes and Banana Splits!*

**Open from 7am to 11pm Monday thru Thursday**

**Open from 7am Friday to 10:30pm Sunday (Open ALL NIGHT Friday & Saturday)**

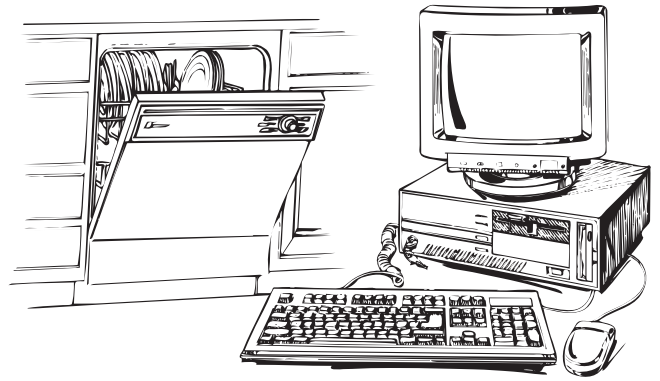
**3139 S. Grand    Dine In or Carry Out    Dial 772-6100**



# REHABBING WITH RICH

BY RICH IEZZI

## WE'RE NOT BUYING IT



I recently turned the big 6-OH but remained determined to act and think young. Then I was broadsided by our dishwasher.

Our old Maytag dishwasher started screaming so loud that we got used to closing doors and not making calls until its cycle completed. I finally called my appliance store guy, Bob, and said we wanted a white dishwasher that didn't scream. I unceremoniously removed the Maytag and placed it on the back porch, then installed the new dishwasher.

As my wife Jean triumphantly placed the first dish in the top rack, we discovered that it didn't fit. When we opened the lower rack, it seemed to be on the floor. After exchanging spousal non verbal body language, we both said "I hate it".

The next day I went to see Bob at the appliance store to pick a different dishwasher but they were all like the one we hated. They had buttons instead of the control knob I loved and the lower racks were inches off the floor. Bob said, "This is what people want". Then it hit me---Jean and I were no longer the 'people' who made the decisions on new products. In a perfect irony, we can finally afford to purchase new products but aren't being captured in marketing surveys.

The same thing happened when I shopped for a new computer. All three salespeople I spoke with told me three totally different things but it was always the same explanation----'this is what people are buying'. Finally, a compassionate sales kid pulled me aside and told me to go to

*continued on page 19*

## Opening doors for.....*You.*



- Home Purchases
- Investment Property
- Debt Consolidation
- Refinancing



**USA**  
MORTGAGE  
A Division of DAS Acquisition Company, LLC

*Suzanne*  
**N. SUZANNE GOLEMB**

USA MORTGAGE ACCOUNT EXECUTIVE

**314-628-2026**

Email: [nsoglemb@usa-mortgage.com](mailto:nsoglemb@usa-mortgage.com)

Apply On-line: [www.nsoglemb.com](http://www.nsoglemb.com)





Saint Louis  
**PREMIER REALTORS®**  
FIRST IN SERVICE.

## *Your Gateway to Real Estate Success*

Our diverse team of REALTORS® is proud to provide the community with exceptional team-driven services and strong knowledge of the entire metropolitan St. Louis region. Our dedication to your needs sets us apart in today's competitive real estate market.

At St. Louis Premier REALTORS®, we provide a team of real estate professionals trained to work for you. Let us help you get the most out of your next property sale or purchase.

**2200 S. 12th Street, Saint Louis, Missouri 63104**



RESIDENT PROFILE:  
...continued

## Nels C. Moss

establish the special business taxing district and code requirements that have helped make South Grand what it is today. "We were convinced a stable commercial district would serve as an anchor to support the stability of the neighborhood—a belief that has proven to be true," said Nels. One of his family's many favorite restaurants is Pho Grand; they also frequently shop at Jay International.

Another asset Nels speaks highly of is the Grand Oak Hill Neighborhood Center. Along with Frank and Fran Lauman, founding members of Grand Oak Hill, Nels was instrumental in helping Grand Oak Hill acquire its current building on the corner of Juniata and Bent Ave. Nels continues to regularly attend meetings at Grand Oak Hill which he considers "a great neighborhood resource" that runs worthwhile programs related to senior citizens, tool-lending & home-maintenance assistance.

*continued on page 13*



**GROVE**  
FURNISHINGS

3169 Morgan Ford Rd  
St. Louis, MO 63116  
314-776-7898  
W - F 11-7;  
Sat & Sun 10-5

W I R E L E S S I N T E R N E T A C C E S S

# VanGoghz

www.vangoghz.com

## MARTINI BAR & BISTRO

314.865.3345

OPEN at 7am

servicing: COFFEE, BREAKFAST & LUNCH

- Events up to 150
- Private Parking
- Nintendo Wii

**3200**  
SHENANDOAH  
SOUTH CITY

# ***Television Advertising is... ...More Affordable Than You Think!***



For over ten years the Television Cooperative has been helping area businesses promote their business with low cost highly effective television campaigns.

***The Television Cooperative,  
Affordable Television Advertising  
for Independent Businesses!***



**Offices in St Louis and Kansas City  
Coming Soon to Nashville!**

**314.416.7382**  
email: TVCOOP@sbcglobal.net



## RESIDENT PROFILE: ...continued

### Nels C. Moss


Another aspect of TGH that Nels appreciates is its proximity to Tower Grove Park and the Missouri Botanical Garden—which he considers “an anchor above all anchors”—as well as its easy access to downtown and many other destination points. He shared that it used to take him only 10 minutes to get to his job as a prosecutor for the Circuit Attorney downtown, where he worked for 30 years before retiring and then starting his own private law practice in Clayton.

And of course, Nels loves that our neighborhood is filled with well-maintained city homes, exemplary for their architecture and characteristics that he has not seen anywhere else. He values his own home for its oak floors, pocket doors, bay windows, butler pantry, beautiful woodwork and staircases, and his diningroom’s unique box-beam ceiling with unusual accent cornice work. Like many Heights owners, Nels has done a fair amount of rehabbing including the kitchen, bathroom and fireplace of his own house as well as the lower flat of a 2-family unit that he owns on Connecticut.

When Nels is not working or enjoying our local amenities, or giving talks at his alma mater Washington University, he likes to spend time at his cabin on the Mississippi river near the Grafton ferry just 45 minutes from TGH. Since acquiring the property in 1976, Nels has done boating, swimming, water skiing, fishing, biking, and eagle-watching there—hobbies he shares with his family and friends as often as possible. Nels has had many exciting experiences at his river property, but hopes to never repeat those connected with the ‘93 flood. During that disaster, the water in his cabin rose to 6

feet on the second floor! While it was difficult to rebuild his cabin afterwards, he considers himself fortunate compared to the many other owners whose properties were wiped out beyond repair that year.

Although Nels has lived many happy years at his TGH house, he nevertheless expects that within the next five years, he will move to a smaller home given that he no longer needs so many rooms. In the meantime, he will continue to enjoy the many benefits of being a resident of Tower Grove Heights – a community that has flourished thanks in part to Nels contributions! ❁



# MokaBe's

coffee house

◀ 3606 ARSENAL at GRAND  
◀ ST. LOUIS, MO 63116  
314-865-2009

**LATTES • COFFEES • SANDWICHES • DESSERTS • MUSIC**

**BREAKFAST • MONDAY - SATURDAY 8 AM**

**BRUNCH • SUNDAY 9 AM**



# GRAND HABITAT

*Antiques & Collectables*

**3206 S. Grand Avenue**

**specializing in**

Antique Furniture	Books	Redwing Stoneware
Decorative Mirrors	Estate Jewelry	China & Glassware
Vintage Prints	US Gold & Silver Coins	Kitchenware
	Unique Affordable Gifts	

**OPEN DAILY AT 11 - CLOSED TUESDAYS**

# STREETS SOUTH OF *Tower Grove Park* WORD SEARCH

MPMHTSYERHPMUHP POTOPAR  
AACAH TDVLBDNARGHTUOSA  
DRDROFNAGROMCDOIKRAPGM  
AVAHATUNUJTS DROFTRAHIC  
LLLYCEVAYRUAMTNIWRZAWD  
PTFBWFYZHTUOSTSVSIMIEO  
HURRYOYOOCBECKAVEWINVNN  
ACEEEAALVARVSNS SNANA  
TSDVIDWOEMCERAMTERJYLL  
UEABAMSHOHAALOIBEUGFTD  
OBVRVRSSTGDUSRZAKTVRANA  
LAEAEWOOCITMTGRACEAVEV  
EMKNAPYMUJHCOAHUDMCEBE  
VBHHTHSOUTHS SPRINGAVEVZ  
AETGIATSMWTJGREBERIAFO  
WRURILVARIUSENOVNIEVAL  
EGOZOLLEENNVHTILANLEIR  
IESGBGEAILAGSAYKIRHARO  
VROZEHEAVSOISRTTHTEEVG  
RARACRTREEULRTSUPTHLEE  
IVANKAPLSOZEYUJTMCUAYR  
AEVASPILLIHPGFJUHTUOSF  
FAETTGILECONNECTICUTST

*test your word search skills by navigating  
this puzzle to find all 34 street names*

ALFRED ST	GUSTINE AVE	PHILLIPS AVE
ARSENAL ST	HARTFORD ST	PORTIS AVE
BAMBERGER AVE	HUMPHREY ST	POTOMAC ST
BECK AVE	JUNIATA ST	ROGER PL
BENT AVE	MAURY AVE	SOUTH GRAND BLVD
CHERRY LN	MCDONALD AVE	SOUTH SPRING AVE
CONNECTICUT ST	MIAMI ST	THOLOZAN AVE
FAIRVIEW AVE	MORGANFORD RD	UTAH PL
FYLER AVE	OAK HILL AVE	UTAH ST
GILES AVE	OLEATHA AVE	WINNEBAGO ST
GRACE AVE	PARKER AVE	WYOMING ST
	SOUTH KINGSHIGHWAY BLVD	

## ANOTHER JEWEL IN THE CROWN...

*continued from page one*



plan a trip to Vegas yourself by visiting the Travel section, and then make selections of CDs and audio books to pass the time while flying or driving there. All from one location a few steps from your door, and all for FREE, to any St. Louis resident.

In fact, to the techno-savvy beginning in April, 2008, library card holders may download audio books and videos anytime at no charge onto their computers, mp3 players and other devices (no iPods, however) without leaving the comfort of their house or office. The program is known as Get It Now! at [www.SLPL.org](http://www.SLPL.org).

Carpenter, like other libraries in the system, present interactive offerings and programs, as well. In March there were hands-on craft activities for elementary and teenage students at Carpenter. One can see classic and contemporary movies such as "North by Northwest" and "Ratatouille." You can obtain tax forms and receive tax tips. The Main Library downtown, regularly presents live musical performances like the Cajun/Mardi Gras concert of the Zydeco Crawdaddys last March. Authors of current best sellers regularly discuss their works at many of the branches, including Carpenter.

Cynthia James is the Director at Carpenter. Its hours are 9:00 a.m. -

*continued on page 16*

*"All things are perceived in the light of charity, and hence under the aspect of beauty; for beauty is simply reality seen with eyes of love."*  
~Evelyn Underhill

Please remember the Tower Grove Heights Neighborhood Association when you are making donations this year. 100% of your donation to TGHNA is tax deductible and the money will be used to improve the neighborhood. If you would like to donate, send a check made out to "TGHNA" to:  
**TGH Neighborhood Association**  
**3735 Connecticut Street**  
**St Louis, Missouri 63113**

## Tower Grove Heights Residential Specialist!



**No Pressure Personal Service**  
**Timely Communication**  
**Free Market Analysis**  
**Staging Ideas**  
**Helping Buyers & Sellers**

As a long time resident of Tower Grove Heights, I offer a specific understanding of the value of historic homes in our neighborhood.

*Call me for a no pressure consultation and let me help you get your home ready for today's market.*

**JULIE BRIDELL**  
314-575-0897 (CELL)  
314-351-6005 (OFFICE)  
4320 Hampton Avenue  
jbriddell@cbgundaker.com



## Test Drive

## GRAND CHIROPRACTIC

Mention this ad for a **FIRST VISIT for only \$45\***...

Why so generous? Because we believe that once you experience treatment at GRAND CHIROPRACTIC, you will never be satisfied with anything less. Thousands in St. Louis don't know what Chiropractic can do to help...This is your chance to find out! Dr. Reiter has special interest in non-surgical treatment of carpal tunnel, herniated disc and chronic pain from fibromyalgia.



*Dr. Daniel O. Reiter*  
*Dr. Alexia M. Hampton*

Providing Traditional  
"Hands-on" Chiropractic  
Treatment & Associated  
Therapies For Treating  
Chronic & Difficult Cases

### DO YOU SUFFER FROM:

- Back Pain
- Headaches
- Neck Pain
- Carpal Tunnel
- Shoulder Pain
- Disc Bulge
- Fibromyalgia
- Spinal Stenosis
- Indigestion
- Leg Problems

**FREE Phone Consultation To Answer Any Questions...**

- 1. FIRST VISIT ALL FOR \$45\***
- 2. MOST INSURANCE ACCEPTED**
- 3. EASY PAYMENT PLANS**

\*The first visit offer is for new patients only when paid for on the same day as the visit.

**GRAND**   
**CHIROPRACTIC**  
Traditional "hands-on" treatment

[www.reiterchiro.com](http://www.reiterchiro.com)

**314-664-3200**

in the Tower Bldg. on Grand & Gravois



# Korzendorfer-Bick

Picture & Frame Company

~ St. Louis' Oldest Frame Shop - Established 1898 ~

**Quality · Affordability**

1910 Olive Street

Call for Hours: (314) 231-0899

## ANOTHER JEWEL IN THE CROWN...

*continued from page 14*

9:00 p.m. Monday through Thursday; 9:00 a.m. - 6:00 p.m. Friday and Saturday; and 1:00 p.m. - 5:00 p.m. on Sundays.

There are many reasons why St. Louis has been in the top ten of America's Most Literate Cities with populations greater than 250,000 people, for the past four years. In 2007 the St. Louis Public Library attained the Second Place ranking in the Library Category - the fourth consecutive year ranking in the top three. Visit the historic Carpenter library soon to see why. And thank the helpful staff for making such an important contribution to our quality of life in Tower Grove Heights. St. Louis Public Library System: "The Place to KNOW BETTER."

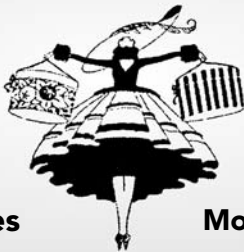


## The Vintage Haberdashery

3181 Morganford Rd.  
St. Louis, MO 63116

NEW LOCATION

**Fabulous Vintage  
Clothing & Costumes**



314-772-1927

Buy • Sell • Rent

**Store Hours:  
Mon-Sat 11-6 • Sun 12-4**



**jackson pianos**  
3138 cherokee street  
[314]773-4341

**jacksonpianos.com**

REBUILD SELL TUNE REPAIR  
REPAIR TUNE SELL REBUILD

# yoga

with kathryn

## to the rescue

calm your body and mind, restore energy and strength.  
balance the stress of life and reward yourself with  
peace and harmony.

**Private  
Lessons  
Available**



**Marbles  
Yoga Studio**  
1905 Park Ave.  
Tuesday 7pm-8:30pm  
open level  
\$12/class, class cards available

**Kathryn Heitzenroeder 314.773.3578 / 314.413.7711**  
**kheitenroeder@yahoo.com**



**ST. LOUIS  
PUBLIC  
LIBRARY**

3309 South Grand Boulevard  
St. Louis, MO 63118  
(314) 772-6586





# Salute the Sun!

By Kathryn Heitzenroeder



It seems that the Sun is finally out and spring has actually sprung! Like the refreshing feeling we are experiencing now, you can create your own inner bliss with a series of Sun Salutations. Surya Namaskar, or Sun Salutation is a core part of a yoga practice. It is a series of postures that can be used to warm up the body, build strength and center your mind. You can move through the sequence quickly, or take a slower, more deliberate pace. Each is beneficial in different ways. A series of quick salutations will not only warm the body at a faster pace, but it will increase your endurance and even out the breath. A slow series of salutations can allow you to focus more deeply on the body and its affects of the postures.

The most common sequins for the Salutation consist of 10 poses.

- 1) Mountain Pose (Tadasana): Stand with your feet hip distance apart. Bring your hips over your ankles and your shoulders over your hips. Place your arms along the body with the palms turned forward.
- 2) Upward Salute (Urdhva Hastasana): Inhale as you reach the arms over your head. Keep the shoulders drawing into the sockets as the energy reaches through the arms and out the fingers.
- 3) Standing Forward Bend (Uttanasana): Keeping the hips over the ankles, stretch the torso over the legs as you

exhale. If your fingertips reach the floor, bend the elbows out to the sides. If they don't, grab opposite elbows.

- 4) Half Table (Ardha Uttanasana): Inhale as you flatten out the back, lifting the torso away from the body. Keep the fingers on the floor, or bring the hands to the thighs. Keep the legs straight and the knee caps drawing up the legs. Exhale as you draw the torso closer to the thighs and release the neck.
- 5) High Lunge: Inhale as you step the right leg back to a lunge. Pressing through the right heel, keep the thigh moving up and the left knee moving out.
- 6) Downward Facing Dog (Adho Mukha Svanasana): Exhale stepping the left leg back to down dog. Press the index finger and thumb sides of the hands firmly into the mat, while you rotate the tops of the thighs in.
- 7) Plank Pose: Inhale as you bring your torso forward and perpendicular to the floor. Press through the heels while you draw the shoulder blades onto the back.
- 8) Four Limbed Staff Pose (Chaturanga Dandasana): Exhale bending the elbows as the body lowers down toward the floor. Keep the shoulders on the back and the elbows close to the body. Lift the thighs away from the floor and press the heels away from the body. The body hovers over

the floor with the core engaged and the head lifted.

- 9) Upward Facing Dog (Urdhva Mukha Svanasana): Inhale your arms straight as you pull the chest forward into up dog. The shoulders are over the wrists and the ears are away from the shoulders. The legs stay active while the low back is soft.
- 10) Downward Facing Dog (Adho Mukha Svanasana): Exhale back to Down Dog by using the abdomen to shift the hips backward and up.
- 11) To complete the sequins, lift the heels, bend the knees, inhale, then jump (or walk) both feet forward. Then, straighten the back as you lift the torso exhaling the hands to the heart.

This sequin of poses is a classic one. You can vary your Sun Salutation by adding or changing the poses to fit your practice. They are not only a great way to warm up the body, but a wonderful way to start your day. Try it out and experiment with your own personal salute to the sun.

Namaste!





WELCOME!

There's a place for you at

## St. John's Episcopal Church

Sunday services w/ communion  
10:00 a.m. main church  
& 5:00 p.m. chapel

3664 Arsenal street,  
between Grand & Spring

phone - 772.3970

[www.towergrovechurch.org](http://www.towergrovechurch.org)  
email: [info@towergrovechurch.org](mailto:info@towergrovechurch.org)

## Affordable Retirement Living Right Here in the Neighborhood

- Efficiencies • Includes Meals
- 1-Bedroom • Free Utilities\*
- 2-Bedroom • Housekeeping

### TOWER GROVE MANOR

Apartments for Independent Retirement Living

[www.TowerGroveManor.org](http://www.TowerGroveManor.org)

Owned by  **St. Andrew's** Resources for Seniors



**Call for Complimentary Lunch and Tour!**  
**314-773-2800 • 2710 S. Grand Blvd.**  
**Overlooking beautiful Tower Grove Park**

## REHABBING WITH RICH

### WE'RE NOT BUYING IT

continued

Clayton Computer. It was wonderful. They cater to old guys like me and I purchased a rebuilt computer with a lovely tower and only two icons for \$225. I sadistically enjoy the complaints from friends who caved into buying laptops that 'everyone's buying' but can't get them to work.

When we decided to buy a digital camera, I was truly excited to leap into a new parsec even though Jean and I loved the convenience of the throw-aways. My new camera's user's manual has 114 pages but I gamely searched for the option that kept the flash on no matter what. Again, I felt twisted satisfaction that it took several calls to Creve Coeur Camera for them to figure it out. Inflated with new artificial intelligence, I picked up my pictures at Walgreen's only to see they were terribly cropped. The camera lady said "You must have chosen 'wallet size' when you created your profile". Oh boy.

But things are looking up. I fought the 'what people are buying' movement by purchasing a calculator the size of a TV tray and an outside temperature thing big enough to read from our back door. Also, I recently read an article claiming that larger cell phones can now be purchased so people can actually use them. And the dishwasher?--- we paid big bucks to have the old Maytag fixed.

Jean and I will be on vacation soon and after exchanging more non verbal spousal communication, I'm thinking we'll be packing those throwaway cameras along with the new digital one-----that everyone is buying.

- RICH IEZZI





michelle triplett  
interior design

*your home, your style...  
we will make it happen!*

**CREATIVE** solutions for existing or new furnishings

**THOUGHTFUL** planning of interior spaces

**INNOVATIVE** use of color

**EXPANDING** beyond existing boundaries

**FUN**, organized, and stimulating children's spaces



**michelle triplett, owner** • 3710 humphrey street  
saint louis, missouri • 314-623-9899 fax 314-772-7997  
MTriplettInteriors@sbcglobal.net • NCIDQ Certificate Number: 020949



**Because  
COOL never  
goes out  
of style!**

**DECO 40's**  
**Rockin' 50's**  
**GROOVY 60's**

- Furniture
- Lights
- Accessories
- Bar Items
- Kitchen
- Vintage Jewelry
- Vintage Clothing
- ... And Much More!



**3201 S. GRAND BLVD. ST. LOUIS 63118 (314) 865-1552**  
**TFA50S@AOL.COM** **EBAY SELLER TFA50S**

# BOULEVARD GROUP

*TOWER GROVE HEIGHTS is the place I call home.  
I'd love to help you find a home here, too!*

**Becca Belz**

314.727.1235 (office)

314.221.8665 (cell)

www.boulevardstl.com



**Prudential**  
Select Properties



## GRAND HOUSE TOUR 2008

BY DIANE HURWITZ

The weather was perfect (at least on Sunday), the houses were at their best, and the visitors were pleased. Yes, it was yet another successful Grand South Grand house tour!

This year's tour showcased eleven houses and one church selected from the five neighborhoods represented on the tour (Shaw, Tower Grove East, Compton Heights, Compton Height Reservoir Square and our own Tower Grove Heights).

The fifteenth year for the tour, a banner year, featured such gems as the Magic Chef Mansion, the director's house for Tower Grove Park, one of our neighborhood's own Channel 9 "celebrity" houses, and a newly constructed house built to resemble the original architecture of the street. Our neighborhood also had two other houses on the tour which were not to be missed, and many docents overheard comments that this year's tour, chaired once again by Anne Moore of the Tower Grove East Neighborhood was one of the best. Because of such draws, and in spite of the weather, the crowds, Saturday alone, topped last year's two-day totals. The tour also featured several types of music, wine tasting, and the unveiling of the house tour's own wine label. As for



**Tower Grove Homes**

*In the Business of Neighborhood Building*

*For more information  
on homes for sale  
or lease, call  
Susie Gudermuth  
(314) 771-7097*

**Urban living  
with  
a small  
town feel.**



**JENNIFER A. FLORIDA**

ALDERWOMAN FIFTEENTH WARD

**Board of Aldermen: 622-3287**

**Voice Mail: 622-3763**

**Fax: 622-4273**

**Home: 776-2890**

Board of Aldermen · City Hall  
1200 Market St. · St Louis, MO 63103-2873



## OAK HILL TRUE VALUE HARDWARE & PAINT CO.

4100 CONNECTICUT ST. AT OAK HILL

314-776-0741

**A FULL SERVICE FAMILY OWNED  
HARDWARE STORE SERVING SOUTH  
ST. LOUIS FOR OVER 60 YEARS**

HOURS: Monday thru Friday 8 to 5:30  
Saturday 8 to 5

### 10% OFF WINDOW/SCREEN REPAIRS

Present This Coupon With Windows or Screens To  
Be Expertly Repaired For A 10% Discount On Labor & Materials

Coupon expires 06/30/08 (TGHNA)

Not applicable to work in progress - Oak Hill Hardware



Tower Grove Park  
Director's House



the houses, they ranged from elegant to charming; from brightly colored walls and contemporary styling; to simple furnishings; to the ornate. All reflected the varied lifestyles of our neighborhoods and residents. Everyone seemed to be very enthusiastic and appreciative of the opportunity to get a taste of our various neighborhoods and the many businesses and restaurants in the area.

If you would be interested in having your home on the tour next year or helping out in any way, please contact any of the TGHNE board members or Anne Moore.

Thanks to all of the residents who helped in any fashion from picking up litter to allowing room for the buses to drop off tour goers and for being such wonderful ambassadors to all those who visited our neighborhood during the tour.

Magic Chef  
Mansion &  
Front Hall



If you're thinking about buying  
or selling a home, call the experts  
at Prudential Select Properties!

Discover a better way to search  
for homes and open houses. **PSPhomes.com**



**Prudential  
Select Properties**

4601 Hampton Ave.  
St. Louis, MO 63109  
**314•832•9100**

**studio 2108**

*Provides Creative  
Graphic Design Solutions  
from Print to Web*

**Studio 2108** is a professional **Graphic Design & Web Design** company with over 17 years of experience providing the following services:

- Design - Logos, Brochures, Catalogs, Posters  
Collateral Materials, Postcards & Booklets
- Web Design, Development & Hosting

At **Studio 2108** we can help you make your ideas come to life on paper and on the web.

Call **Wayne M. White** for more information.

**studio  
2108**

3801 Wyoming St.  
**314.865.5088**

*(Located in the space formerly known as  
The Shop at Spring & Wyoming)*

**www.studio2108.com**

# Come visit . . .

Oak Hill Presbyterian Church  
 Corner of Oak Hill & Connecticut, St. Louis  
 4111 Connecticut, St. Louis  
 Call us at 664-5525 or visit us at  
[www.oakhillpcusa.org](http://www.oakhillpcusa.org)



**Sunday School 9:15 a.m. • Worship 10:30 a.m.**



## CHIMICHANGA

SAINT LOUIS'S FINEST

### Authentic Mexican Food

(314) 362-0202  
[www.chimistl.com](http://www.chimistl.com)

5425 S. Grand Blvd. • St. Louis, MO 63110

Willie Flores  
 owner/  
 manager

## CheapTRX

Shopping  
 Piercing  
 Tattooing



Naughty or Nice.... Whatever YOUR heart desires!

**3211 S. Grand Blvd - 314.664.4011**

## CDS GROUP LLC

*Your Income Tax Specialists on Grand*

— SERVING ST LOUIS FOR OVER FIFTEEN YEARS —

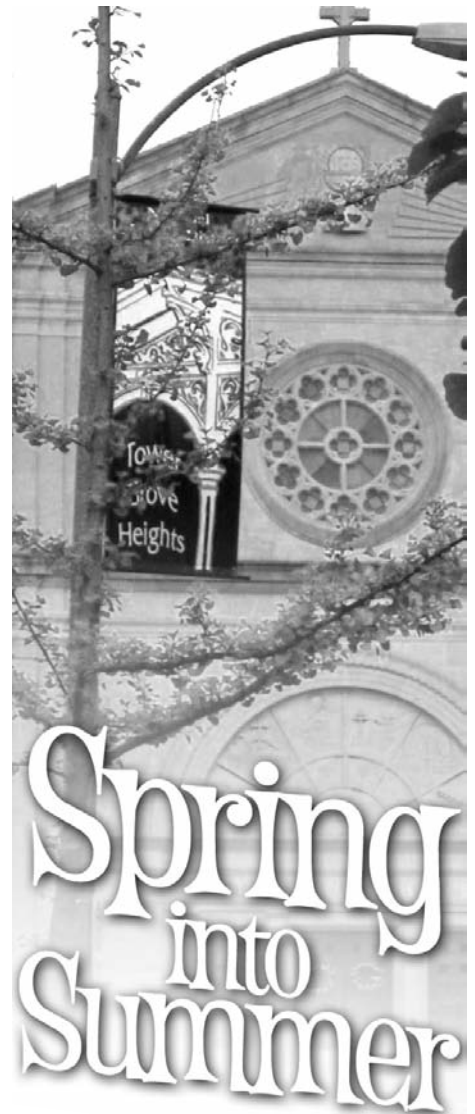
**Mary E. Dorn**

3201A South Grand  
 Suite C  
 St. Louis, MO 63118

Phone 772-8969

Fax 772-8192

[cdsgroup@sbcglobal.net](mailto:cdsgroup@sbcglobal.net)



# Spring into Summer

## HODAK'S

Restaurant & Bar

WHERE CHICKEN LOVERS COME TO ROOST

### BULK RATES

10 LBS. WINGS .....\$51.00

50 PC. FRIED  
 CHICKEN.....\$51.00

100 PC. FRIED  
 CHICKEN.....\$102.00

SLAW (GALLON) .....\$11.50

BAKED BEANS  
 (GALLON) .....\$11.50

POTATO SALAD  
 (GALLON) .....\$12.50

2100 Gravois Road • 776-7292

# The St. Louis Regional Bicycle Federation & The South Grand Community Improvement District

present the first annual

## SOUTH GRAND TOUR ST. LOUIS: *Mother's Day Bike Ride*

ST. LOUIS, MO – April 29, 2008. The St. Louis Regional Bicycle Federation in partnership with the South Grand Community Improvement District will be hosting the South Grand Tour St. Louis Mother's Day Bike Ride on Sunday, May 11. Riders can register and start riding between 7:00 and 9:00 a.m. the day of the ride, or register in advance online at [www.stlbikefed.org](http://www.stlbikefed.org). The ride has three distances to choose from: 5 miles, 18 miles or 34 miles. Registration and start will take place in the parking lot behind Commerce Bank located at 3134 South Grand Blvd. The cost is \$5 for moms, \$7 for everyone else while kids age 10 and under ride free. Call 314-707-5001, or visit online at [www.stlbikefed.org](http://www.stlbikefed.org) for more information.

The ride is intended to encourage families and city dwellers to take advantage of the city's bicycle lanes for fun, exercise, and viable transportation. You can still give Mom macaroni art and take her out to brunch, but why not start out the Mother's Day experience with a refreshing bicycle ride around the City of St. Louis?

Helmets First will offer helmet fitting and free or deeply discounted helmets for kids. The St. Louis Regional Bicycle Federation will offer maps and informative literature on bike commuting and safety. St. Louis Bicycle WORKS will offer mechanical safety checks and

minor repairs on site and Gateway Arch Riverfront will have bikes available for rental. Come out with mom and enjoy the scenery of St. Louis.

Proceeds from the ride will support the projects and programs of the St. Louis Regional Bicycle Federation whose mission is to make the St. Louis region more friendly, safe, and accessible to people on bicycles through educational outreach, advocacy, and improved facilities.

### About the St. Louis Regional Bicycle Federation

A non-profit organization, the St. Louis Regional Bike Federation shares a vision of a bike-friendly region that covers Franklin, Jefferson, Madison, Monroe, St. Charles, St. Clair, St. Louis Counties and St. Louis City. Its vision includes, but is not limited to these ideals: bicyclists have a right to safe, well-planned roadways; proper equipment and training is important to safe riding; and education of cyclists and motorists is needed. [www.stlbikefed.org](http://www.stlbikefed.org).



## TOWER GROVE HEIGHTS Neighborhood Association Contact List

Monthly meetings 7:15 pm on 4th Tuesday (except December),  
First Church of Divine Science on 3617 Wyoming Street

### BOARD

**President:** .....Robert Ashton  
**President-elect:** .....Mark Froese  
**Past President:** .....John Papa  
**Secretary:** .....Diane Hurwitz  
**Treasurer:** .....Jan Clinite  
**Asst. Secretary/Membership:** .....Pauline Ashton

### COMMITTEE CHAIRS

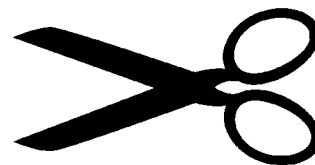
**Block Representatives:** .....Tom Reitenbach  
**New Business/Gazette Advertising:** .....Gary Kushinsky  
**Fund Raising/Events:** .....Kathryn Heitzenroeder  
**Webmaster - towergroveheights.com:** .....OPEN

### BLOCK REPRESENTATIVES

**3600/3700 Arsenal:** .....Recruiting!  
**3800 Arsenal:** .....Recruiting!  
**3600/3700 Hartford:** .....Mark Abbott/ Sherri Craven  
**3800 Hartford:** .....Rich Iezzi  
**3600/3700 Juniata:** .....Lynne Casey  
**3800 Juniata:** .....Tom Reitenbach & Kim Cole  
**3600/3700 Connecticut:** .....Jodie Heliker  
**3800 Connecticut:** .....Virlene Reichert  
**3600/3700 Wyoming:** .....Gen Obata  
**3800 Wyoming:** .....Theresa Mithen  
**3600/3700 Humphrey:** .....Recruiting!  
**3800 Humphrey:** .....Erin L. O'Reilly/ Georgiana Grant  
**3600/3700 Utah Place:** .....Christy Andrews/ Susie Gudermuth  
**3800 Utah Place:** .....Pat Edwards/ Jim McClaren

[www.TOWERGROVEHEIGHTS.com](http://www.TOWERGROVEHEIGHTS.com)

# Clip & Save Reminder *Area Events & Activities*



**Tower Grove Farmer's Market: May 10 - Oct 25;** Saturday's only - just west of the Pool Pavilion in the center of the Park; Market times are 8:30 AM - 12:30 PM.

**Tower Grove Movie Nights:** Grab a blanket, pack a picnic, and bring the kids for a fun movie with the family in Tower Grove Park; Whitaker Theater at the Pool Pavilion; Movie starts at dusk - around 8:30 PM. FREE. *June 14 West Side Story; July 12 Father of the Bride w/Spencer Tracy; August 9 Back to the Future; September 6 Dumbo.*

**Friends of Tower Grove Park Children's Concert Series:** Piper Palm House; 9:30 - 10:30 AM FREE; *June 18 "Flashing Brass"; June 25 "Back to Baroque"; July 2 "St. Louis World's Fair"; July 9 "Meet us in St. Louis"; July 16 "Stringing Along"; July 23 "Sound the Drums!" July 30 "Peter and the Wolf"; August 6 "Where in the World is the Music?"; August 13 "The Bremen Town Musicians"; August 20 "Bing! Bang! Boom!"*

**Compton Heights Concert Band:** Music Stand; 7:30 PM FREE; For info call: 776-2227; *June 30 Features Robert Ellison, Overture 1812, and Cannons in a July 4th Tribute!; July 7; July 14; July 21; July 28, August 4 Features the fabulous Finale with Hugh Smith!*

**May 11 South Grand Tour St. Louis:** Saint Louis Regional Bicycle Federation, in partnership with the South Grand CID, will be hosting a Mother's Day bike ride. The ride is intended to encourage families and city dwellers to take advantage of the city's bicycle lanes for fun, exercise, and viable transportation. Riders can register and start riding between 7:00 a.m. and 9:00 a.m. the day of the ride, or register in advance online at [www.stlbikefed.org](http://www.stlbikefed.org). Registration and start will take place on South Grand Blvd. in the parking lot behind Commerce Bank located at 3134 South Grand Blvd. The cost is \$5 for moms, \$7 for everyone else. Kids 10 and under ride free.

**May 11 - Mother's Day brunch at Cafe Madeleine;** For more info and reservations please call Butler's Pantry at 575-5658.

**May 26 Compton Heights Concert Band Memorial Day Concert;** Soloist: Robert Ellison, Baritone; Music Stand - 3 PM

**June 7 - 8 Pagan Picnic:** For more info call: 314-477-2063

**June 28 - 29 Pride Fest:** East end of the Park; Parade, crafts, merchandising, concessions, and live entertainment; 11 AM - 7 PM. For more info call: 314-772-8888 or <http://www.pridestl.org/pridefest.html>

**Aug. 23 - 24 Festival of Nations:** Southeast corner of the Park; Multicultural festival featuring ethnic and dance performances, authentic food and crafts, and children's activities. Saturday 10 AM - 7 PM; Sunday 10 AM - 6 PM. For more info call: 314-773-9090 or <http://www.iistl.org/festival.php>.



## TOWER GROVE HEIGHTS NEEDS YOU!

The Tower Grove Heights Neighborhood Association can only be YOUR association if you join. With your participation, TGHNA will be a reflection of what YOU want the Heights to become. So please don't delay in joining or rejoining.

- To find out what is happening in the neighborhood
- To make the Heights a cleaner and safer place
- To have a liaison with City Hall and other agencies
- To better protect our property values
- To make the neighborhood a more interesting and fun place to live

Please indicate your membership level choice:

- \_\_\_ Individual (1 vote) \$10/year
- \_\_\_ Household (2 votes) \$15/year
- \_\_\_ Lifetime (1 vote) \$100 single payment
- \_\_\_ Business (1 vote) \$25 /year  
(entitles member to a 10% discount on TGHNA Gazette Ads for one year)

NAME(S) \_\_\_\_\_

ADDRESS \_\_\_\_\_

PHONE \_\_\_\_\_

EMAIL \_\_\_\_\_

\_\_\_ Yes \_\_\_ No, Include my name, address and contact information in the TGHNA Buzz Book

\_\_\_ Yes \_\_\_ No, Please add my email address to the Neighborhood Forum Email notification list



Return this form and tax deductible gift to your block representative or send to:

**Tower Grove Heights Neighborhood Association • 3735 Connecticut, Saint Louis, MO 63116**

(TGHNA is a tax exempt 501c3 organization)