

Operation BrightSide

by **Audrey Anderson**

It's Spring!

Time once again for Project Blitz, Operation Brightside's annual campaign to clean and beautify our neighborhood. Tower Grove Heights' blitz will be Saturday, May 17 beginning at 10 a.m. Volunteers are crucial to the success of Operation Brightside. Call your block representative to volunteer. Trash bags, tools, mulch, wood chips and flower will be provided to the volunteers. The volunteers (YOU) will pick up trash from the street, sidewalk and alley. If you are not volunteering you can help by

getting your trash out that day before 10 a.m. and following these guidelines.

- Place all small items in dumpster. Do not overload,
- Your regular bulk pick-up site is directly behind your home at the edge of the alley. Place large items, such as furniture and appliances, there. Make sure bulk items are a least 4 feet from any dumpster and do not block access. Items placed on private property cannot be picked up.
- Yard Waste: place grass, leaves and twigs in "Yard Waste Only" dumpsters.

- Volunteers will do the rest of the work and the Block Representatives will give them their assignments.

This is a worth while project that also provides an opportunity to meet your neighbors. If you have teenagers at home complaining about nothing to do, ask them if they would like to participate. It will look good on their resumes. Block representatives will provide meeting time and place for the volunteers on your street.

COOKIES FOR COPS

We depend on our men in blue. Let's be sure that they can depend on the Tower Grove Heights Nieghborhood Association for **COOKIES!**

Say thanks to our police (persons) by continuing this longstanding Tower Grove Heights tradition. If you have signed up to take part in Cookies for Cops, Jenny Young will be giving you a reminder call just before collection days.

Collection Dates:

Memorial Day
Flag Day
Independence Day (not the movie)
Just because it's August Day
Labor Day
Halloween
Thanksgiving
Christmas

May 26
June 14
July 4
August 16
September 1
October 31
November 27
December 25

Call Jenny at 776-2137 for additional information.

IN THIS ISSUE

Surf's Up at Soho	Page 2
Welfare Reform	Page 4
Historic Renovations	Page 5
15th Ward Update	Page 6
Don't Worry Be Healthy	Page 7
Leather 102	Page 8
Companion Bakery	Page 9
"Star Wars"	Page 10
Our Park	Page 10
Message from Pat Dougherty	Page 11
Is Your Credit Card Safe?	Page 11
The Millenium Crisis	Page 12
Barb Potts on Spring	Page 12

Appropriately, this Spring issue is filled with fresh perspective as well as old friends. In her second installment, Jenny Young conducts a class in the process of making your favorite leather. Don Hardin explains whether our credit cards are safe from some users of the internet, and gives us a look into the millenium. Our Neighborhood Stabilization officer, Barb Potts gives us her rundown of Spring cleaning, while Marge Vining and Pat Dougherty explain the innerworkings of their respective seats of government.

The Tower Grove Heights Gazette
Founding Editor: Janice Nesser
Publications Chairperson - Editor: Don Hardin

Graphic Artists: Janice Nesser, Michele Kerr

Database Manager: Tom Booth

Business Manager: Marilyn Abbott

Circulation Coordinator:

Layout design: Donna Mayes

Typesetting: Michele Kerr, Don Hardin

Staff: Marilyn Abbott, Rick Armstrong, Donna Blanca, Tom Booth, Elizabeth Braznell, Benjamin Chu, Richard Clinebell, Matthew Fernandes, Stephanie Gavin, Don Hardin, Jodie Heliker, Tricia Heliker, Rich Iezzi, Donna Mayes, Terry Mayes, Janice Nesser, Erin O'Reilly, Fredrick Rissover, Jay Rosloff, Jenny Young.

The Gazette is a non-profit publication that is published bi-monthly by the Tower Grove Heights Neighborhood Association. For information concerning advertising call Marilyn Abbott at 776.5354. Your letters and comments are always welcome at the Gazette. Mail them to: The Gazette/TGHNA 3203 S. Grand Blvd., Suite 103, St. Louis, MO 63118

INQUIRING MINDS WANTED TO KNOW by Don Hardin

I really don't read the Enquirer (well, maybe in the checkout line at Schnucks). I did, however, find a 1980 copy of the Enquirer while cleaning out a closet. It was the predictions for 1980 issue. Let's see how the psychics did:

- A revolutionary nicotine free cigarette will allow Americans to shed weight simply and safely.
- An amazing electronic device will do away with the need for sleep.
- Hunters will discover an ape-boy in the hills of Kentucky.
- Kennedy will win the Presidency after selecting a woman as his running mate.
- The ghost of John Wayne will materialize at the Alamo before the disbelieving eyes of visitors.

• Scientist will discover a way to deactivate nuclear waste, eliminating a major danger from nuclear power plants.

• The national security Council will reveal that the government has been in contact with a civilization from outer space - and that aliens plan an intergalactic summit meeting with earthlings.

• Burt Reynolds will marry Sally Field and they will adopt twin sisters who are Cambodian refugee orphans.

• Sonny and Cher will remarry in a glittering Hollywood bash at a disco roller skating rink.

• British scientists will develop a safe vaccination that will virtually wipe out the common cold.

Did these psychics get paid for this? Where do I sign up to be a psychic for the Enquirer?

GardenExpo



**6 Weekends
of Gardening Fun,
Facts, Workshops, and
Demonstration
Activities!**

April and May, 1997

Pink Flamingo Fly-In - In honor of their 40th Anniversary
✿ Grand Opening of the Kemper Center for Home Gardening
Idea Gardens ✿ Plant Shows and Sales
✿ Workshops, Tours, Lectures, Demonstrations
✿ Children's Activities ✿ Chinese Festival ✿ Photo Workshop
✿ Lawn Art by Felder Rushing



Missouri Botanical Garden

4344 Shaw Blvd. • (314) 577-9400 • 1-800-642-8842

SURF'S UP AT SOHO

by Marilyn Abbott

Tower Grove Heights' own Internet Coffee Shop, Soho, is under new management and the new focus is evident. The new managing partners, Ian Wilkinson, John Hufker and Wesley Alexander, are collectively known as GeekForce, Inc. The Soho location at Grand and Hartford houses both of the group's business emphases - custom website construction and hosting, and computer-based entertainment.

The website construction business is aimed primarily at visual artists, especially photographers, and musicians who want to use the capabilities of the Internet to advertise their products and services. The GeekForce personnel use specialized approaches to enhance video, still photo and audio presentations on the websites that they build for their customers.

According to Ian, most of their customers find that the response to their website is far greater than any other advertising medium they have used.

The entertainment side of the Soho enterprise is probably much more familiar to most readers. The first thing you might notice in the new and improved coffee house space is a small camera near the door that takes pictures of the passersby on the corner outside. These photos are transmitted automatically to the Soho website, and will probably also be an attraction at the soon-to-debut Tower Grove Heights website now under construction.

Another imaginative feature of the decor at the new Soho is the interesting-looking pieces arranged artistically on shelves and in the front window. All of these items are actually pieces from the insides of various outdated computers. The

GeekForce team hopes that these unique objets d'art will help to demystify computer hardware for non-geeks.

Speaking of hardware, Soho now features 10 terminals for Internet exploration or playing games such as Diablo (a middle ages theme adventure) and Warcraft (a sort of "Sim War" theme). The new T1 Internet connection at Soho is five to twenty times faster than the snail-paced connection you are probably suffering with at home or work. In one hour at Soho you could really fly through that search you've been trying to complete.

For those who have not yet sampled the wonders of the on-line world, the Soho staff are happy to help you get started. So come on down, get a soothing cup of coffee and settle in for the most fun you've had with an electronic device in quite a long time!

His mother calls him Jeffrey Aaron Lopinot but you can call him Jeff.

Principal Designer for the Rusk International Design Team. Trained at Vidal Sassoon, London, & The Rusk Academy, Los Angeles. Formerly of Gary Palmer Salon. Shelton Davis Salon welcomes Jeff Lopinot to their creative team. Mention this ad when you book your appointment with Jeff, and receive **FREE**, \$10.00 worth of Rusk hair care products. Offer expires 3/31/97.

771-4700

SHELTON DAVIS SALON • 3208 SOUTH GRAND

THE STRAIGHT INFORMATION ON WELFARE REFORM

By Donna Blanca

Nationally, statewide, locally, and in our own Tower Grove Heights, Welfare Reform is a reality; soon to be experienced. The following is a summation of research on this revolutionary program.

On August 22, 1996, President Clinton signed into law the Personal Responsibility and Work Opportunity Reconciliation Act of 1996. The law will end welfare as we know it. Welfare programs are intended to help poor people. Viewed this way, welfare programs should be a temporary stopping place for people on the way out of poverty into productive employment. In 1995, there were more than 36 million people below the poverty line. Programs addressing the needs of those in this category are AFDC, SSI, Medicaid, Food Stamps, Housing Aid. These are entitlement programs whose annual costs often cannot be projected or estimated.

The new law ends AFDC and replaces it with Temporary Assistance for Needy Families. States must put the new program in place by July 1, 1997, or before.

The Food Stamp Program remains an entitlement, but recipients are now required to work 20 hours or lose benefits after 3 months. The law makes it more difficult for children under age 18 with disabilities to qualify for support under SSI. Several hundred thousand children nationwide may be affected by this change.

Missouri policy-makers will have to take stock of existing programs, analyze and understand the changes called for in the massive 1996 law and chart a course to guide state welfare policy into the future. This is no easy task.

An overwhelming percentage of Americans believe welfare is badly flawed and urgently in need of overhaul. Even among Americans from households receiving welfare benefits, only a handful think welfare should be left as it stands. While the cost of welfare bothers Americans, most say that is not their fundamental concern. Instead, the public worries that welfare promotes the wrong lifestyle and values.

Child exclusions would deny public assistance to children born while their families are already receiving public assistance, children born to single mothers or mothers under the age of eighteen and children whose mothers are under eighteen and are not residing with their parents or children for whom paternity has not been established.

The above information is summarized from the following sources: The ACLU Legislative Alert, The National Governors Association National Conference of State Legislatures American Public Welfare Association, and The St. Louis Post-Dispatch.

A SAFE WAY TO LIGHT UP

by Don Hardin

Union Electric, in cooperation with local neighborhoods and the St. Louis Police Department, are planning Operation Night Light. U.E. will be providing FREE light bulbs to be used in porch lights throughout the City. The FREE porch lights are fluorescent, which means they will last up to five years, and cost only about 50 cents a month to operate.

Your Tower Grove Heights Neighborhood Association is working with Union Electric to acquire light bulbs for the entire TGH area. Distribution plans are in the works. Let's all take advantage of this opportunity to "Light Up the Night and Light up the Heights".

WANTED

The Tower Grove Heights Neighborhood Association is looking for an attorney who would like to volunteer their skills to our neighborhood. Minimum time requirements (one meeting per year), and occasional legal advice. Call Association President Sara Langan at 776-3506 for additional information.

Lucas Optometry, Inc.

TODD N. LUCAS, O.D.

Eye Examinations • Contact Lenses • Eye Glasses

**3165 South Grand Blvd.
St. Louis, MO 63118**

Participatory Provider for

Blue Choice
Group Health Plan
Prudential
and Many Other Vision & Eye Health Plans

Office Hours By Appointment

(314) 772-3737

Historic Renovations Underway

By Matthew Fernandes

Just a stone's throw away from Tower Grove Heights, a few bold projects are being carried out. They involve historic structures which were previously in dire need of facelifts. When completed, these public attractions will represent small victories in the city's ongoing struggle against the plagues of urban decay and neglect.

Just south of the Budweiser Brewery is the Lemp Brewery. For decades, the site, which features Italian/Renaissance style architectural, has sat in limbo. Its brick facades weathered winter after brutal winter without any sort of maintenance or repair work. Like so many other industrial buildings in the city, the Lemp Brewery seemed destined to remain barren, unable to attract an investor.

Just recently, though, a few creative individuals, including former Pennzoil executive Jim Goss and golf course designer Robert Von Hagge, devised a plan to put the soul back into those rusty grain silos.

The plan is to transform the brewery into an entertainment district which, combined with the Souldard area, will rival Beale Street in Memphis or Bourbon Street in New Orleans.

The first stage of construction includes a 3,500 seat music hall (opening in October) and two restaurant/brewery operations (the first one opening as early as July). Also in this first stage, a festival courtyard accommodating 20,000 to 25,000 people will be built for major music festivals. (What better site for a new blues festival now that the Blues Heritage Festival has moved halfway to Tulsa!)

Looking a bit further into the future, blueprints have been drawn up for an 80-room all-suites hotel and a pedestrian strip lined with retail shops and more restaurants.

The other major urban renewal project does not hold the promise of long nights of revelry, but long, lazy days of basking in the sun. It is the facelift of Reservoir Park on Grand at Russell.

The renovations in Reservoir Park involve both form and function.

Not only is the park undergoing a much needed landscaping job, the mysterious pond that supposedly exists above the levee-like walls in the park (I've always imagined a dark medieval lake inhabited by large green sea creatures) is being rebuilt to furnish water for city residents.

The tall water tower, which is on the National Register of Historic Places, is currently shrouded in scaffolding while workers restore its crumbling facade. Exposed asbestos is also a problem being corrected in the 99-year-old south-side landmark.

Reservoir park has undergone many changes since its construction in 1867. The site was chosen for a pond to supply water to the booming population because it is one of the highest elevations in the city. Architect Harvey Ellis (who also designed City Hall) of the firm of George Mann designed the tower in the late 1890s to add pressure to the system and to relieve pipe rattling.

Due to the constantly growing demand for water during the 1910s, the city built 12-foot walls around the

Continued on Page 13

GET MORE BORROWING POWER

AT



Roosevelt Bank
The Smart Place To Bank

- Home Equity Loans
- Auto Loans
- Boat/RV Loans
- Personal Loans
- Mortgage Loans

South Grand
3150 S. Grand • 776-4220
(2 blocks south of Arsenal St.)



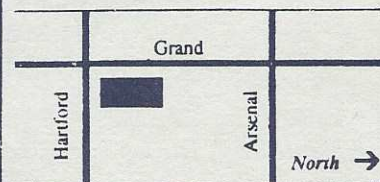
FDIC Insured



**Massive Selection Of
Movies & Games**

Free Popcorn

Free Parking In Rear



3120 S. Grand • 664-2844

15TH WARD UPDATE

By Marge Vining

I have spent the first 17 months working long and hard serving you and responding to you, the members of the 15th Ward. In addition to various improvements listed in my "Update", the 15th Ward had the **second highest number of new homes purchased** in the City of St. Louis. Loan amounts of \$2000.00 per loan for 29 loans for a total of \$58,000 of Riverboat Gaming in Missouri profits were used to provide new homes for residents of our community. The **50/50 "Home Repair Program"** under Gaming revenue was also a huge success. Loans for this program amounted to \$23,525 which were spent to upgrade property in the Ward. Total Gaming Revenue spent in the 15th Ward for various programs was \$76,525, the second highest amount in the City. These types of revenues come through conscientious hard work and many hours of effort.

The **"Cops on the Block"** program proves that the 15th Ward is a very desirable place to live and raise a family. Our Ward had the largest number of police officers buying homes through this program.

The Noise problem which does so much to affect our quality of life has been negated by a **"Noise Nuisance Bill"** which provides for a \$500 fine and points being levied against the violator's operator license. Tickets have been issued and will continue to be issued to ensure peace

and quiet for all of us. Since many of these vehicles are owned by known police characters, this bill provides police with an additional tool for fighting crime in our neighborhood.

When you have identified problems in the neighborhood and notified me I have worked closely with block units, the police department, the Neighborhood

.."Home Depot has broken ground on a new store at the old American Can site on South Kingshighway at Juniata."

Stabilization Officer, and other appropriate City agencies to alleviate the situation. When there was a **problem tenant** in the 3100 block of Alfred I worked with the Housing Authority to revoke the tenant's Section 8 voucher based on various types of illegal activity at that address. The tenant was forced to vacate the property, the illegal activity stopped and the property subsequently sold at market rate and is no longer a rental property. There have been many similar success stories and additional problem properties are being worked on now. As your Alderman, I have had zero tolerance for illegal activity in our neighborhood.

Morganford Bridge Closing: I have worked very hard with the

business owners on Morganford whose businesses are suffering from the bridge closing. I have had the "No Parking" signs temporarily removed and had the "Road Closed" sign at Morganford and Arsenal changed to "Bridge Closed".

The **Home Depot** is coming to the 15th Ward. During the last 7 months, I have been working quietly to put together a coalition between American Can, Sansone Inc., and Home Depot. You may have heard that Home Depot has broken ground on a new store at the old American Can site on South Kingshighway at Juniata. This is really exciting news because there will be 16- full and part-time jobs available at the site. These are not minimum wage jobs, either! These jobs will pay the livable wage of \$10.35 per hour. Home Depot will generate \$400,000 in tax money and the best thing is... all this was done without the city giving away tax breaks!

Helpful Numbers ----

Alderman Marge Vining - 772.6911
Neighborhood Stabilization Officers
Barb Potts, Mike Flood, Diane Rains
622.4628.

The Resource

Vintage Home Supply

1-800-475-0191 FAX: (314) 822-TRIM

- Plumbing
- Furniture
- Bath Accessories
- Moulding, Doors
- Window Hardware
- Columns

238 Meacham, Kirkwood, MO 63122 (314) 984-0191

OPEN TILL 10 PM
7 DAYS
STOP BY FOR
LUNCH OR DINNER!

HODAK'S
Restaurant & Bar
WHERE CHICKEN LOVERS COME TO ROOT!

BULK RATES

10 LB. CHICKEN WINGS	\$37.70
50 PC. FRIED CHICKEN	\$37.70
100 PC. FRIED CHICKEN	\$75.40
SLAW (Gallon)	\$ 8.00
BAKED BEANS (Gal)	\$10.00
POTATO SALAD (Gal.)	\$11.00

2100 Gravois • 776-7292

DON'T WORRY, BE HEALTHY

Compiled by Tom Booth

Recently people have been looking closely at a remedy for arthritis that has been until now used by veterinarians to treat animals. The product is a combination of glucosamine and chondroitin sulfate, natural substances that help form the cartilage that caps the ends of bones.

Deterioration of this articular cartilage and resulting abnormalities in the surrounding bone cause the stiffness, pain, crackling sounds and sometimes swelling of joints that are the hallmarks of osteoarthritis, the wear-and-tear form of arthritis that afflicts 16 million Americans.

The starting dose of three capsules a day costs about \$1.67, and since it's sold as a "nutritional supplement" rather than a drug, it is not covered by health insurance.

The usual treatments for osteoarthritis are anti-inflammatory drugs, combined with muscle-strengthening activities and judicious exercise. This approach may relieve discomfort and slow deterioration of the joint, but it does not restore the

health of damaged cartilage and can cause serious drug reactions.

Rebuilding damaged cartilage has long been the holy grail of orthopedics and rheumatology, and supporters of the glucosamine-chondroitin combination hope it will be the first remedy to achieve this. The individual ingredients have already been shown to improve arthritic symptoms in more than a dozen studies in Europe, some of which were well-designed.

Dr. Marc Hochberg, chief of rheumatology at the University of Maryland School of Medicine, said studies show that glucosamine and chondroitin sulfate, when taken orally for osteoarthritis, "appear to demonstrate that they are effective and warrant examination in a placebo-controlled, randomized trial."

The American College of Rheumatology also noted the promise of early studies, but cautioned that "what looks promising at first doesn't always pan out to be effective or safe."

The combination of glucosamine and chondroitin is now being tested

in well-designed human trials by a few clinical researchers in the United States. Dr. Amal Das, an orthopedic surgeon in Hendersonville, N.C., is assessing its effectiveness in 100 patients with mild to moderate osteoarthritis of the knee.

Das said he had been searching for a "biological alternative to joint replacement" when he stumbled upon the European data on glucosamine and chondroitin. Glucosamine was described as reducing the pain and disability associated with osteoarthritis and chondroitin appeared to slow progression of the disease.

He said he started using the treatment in patients who could not tolerate anti-inflammatory drugs. The compounds are not toxic and, in safety studies at Cornell University's College of Veterinary Medicine, the combination product lacked side effects beyond occasional loose stools in dogs.

A preventive medicine specialist in Arizona, Dr. Jason Theodosakis, who is himself using this remedy and

Continued on Page 13



Hours:

Mon. - Thurs.

8:00 AM - 9:00 PM

Fri. & Sat.

8:00 AM - 10:30 PM

3559 Arsenal

Near the corner of Grand and Arsenal

St. Louis, Missouri 63118

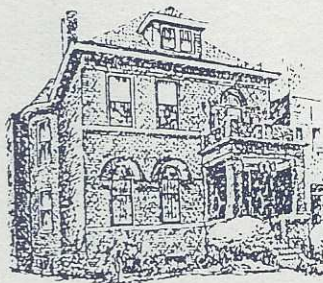
314.776.2828



Tower
Grove Heights
Homes

SUSIE GUDERMUTH

3724 UTAH PLACE
ST. LOUIS, MO 63116
(314) 771-7097



THE WINTER HOUSE
BED AND BREAKFAST

Hosts: Kendall & Sarah Lee Winter

Give Your Out-of-Town Guests a Home
Away from Home

3522 Arsenal Street
Saint Louis, Missouri 63118

(314) 664-4399

LEATHER 102: STEADY PROGRESSION INTO LEATHER

By Jenny Young

Yes, it's me, your friendly leather "specialist" again! Now that you all know some facts about leather, let's delve deeper...

Terms to know:

Full top-grain leather is the top portion of the hide, with all its natural scars, grain variations and wrinkles, disguise markings and grain variations.

Corrected leather is a hide that has been split, sanded and embossed with a grain-like pattern. Dye is sprayed or painted on the surface to achieve a uniformity of color. It's often treated to be soil resistant.

Aniline dyes penetrate the leather without concealing the animal's natural markings. The hide is soaked in the dye and will show shading because dye is absorbed differently in thick and thin parts. Aniline leathers are more prone to staining, but additives can help make them soil-resistant. Aniline leathers also are likely to fade and develop a soft patina.

Pull-up leather has been treated with oils or other substances to lead a soft, pliable and natural feel. Distressed leather has been treated to make it look old and well-worn.

(A lot of terms, I know. Trust me, you'll thank me in the end!)

Now let's talk about leather for upholstery! The best hides come from Scandinavia, West Germany, and the U.K. The supply is supported by hides from other sources, and much attention and care must be taken to insure "usability" of the hide... (square footage, and markings.)

As soon as the hide has been removed from the animal carcass, (yum!) it has to be protected so bacteria does not deteriorate the skin. This is achieved by sprinkling common salt on both sides of the

skin. Or a soaking in brine solution. Upon arrival to the tannery the hides are then rinsed in drums of water, usually 100 to 200 hides a load... much like laundry!

Then the hair and epidermis are removed by a solution of lime, or calcium hydroxide and sodium sulfide. The hides swell up during this procedure, which gives the finished leather the required softness and flexibility required for upholstery purposes. This process takes one to two days.

Now the hide is tanned. Tanning involves a combination between tanning agent and the hide's protein

to form a stable, durable, non-putrescible leather. After the removal of fat and hair, the hide is then split layerwise to produce a fine smooth-grained leather after tanning.

The hides are then delimed to remove all alkalis from the beginning processes, and then the hides are "bated", which is a weak enzymatic treatment that makes the grain finer and smoother; and gives elasticity and plasticity in the finished leather. Then the hides are "pickled" in a weak acid and salt solution to prepare for pre-tanning.

Tanning processes themselves are two main types: vegetable

Continued on Page 14



CITY SPEECH, INC.

Lori R. Linder, M.A., CCC/SLP - President
Speech - Language Pathologist

Diagnostics
Therapy
Training

By Appointment Only

Pediatric Specialists

3825 Utah Place
St. Louis, MO 63116
(314) 773-3060

BOTANICALS ON THE PARK

"Where Everyday is a Holiday"

*Fine Gifts and
Decorative Accessories*

*Flowers for all Occasions
Fresh and Permanent*

*Accent Furniture
Prints and Table Linens*

*Collectibles, Jewelry and
Personal Products*

*China and Crystal
Candles and Cards*

*So, you like Chicago...
You like New York...
You'll love shopping
at Botanicals
On The Park...*

*Big city shopping
in Saint Louis!
Botanicals
On The Park...
City living at its best.*

**BOTANICALS
ON THE PARK**

Botanicals On The Park
3014 South Grand
Saint Louis, Missouri

(314) 772-7674

Hours:

**Monday - Friday: 9 am to 6 pm
Saturday: 9 am to 5 pm**

Companion Bakery Makes Good Neighbor

By Sarah Griesbach

South St. Louisans benefited three years ago from Josh Allen's decision to trade in the idea of beginning a bakery in San Francisco to return home and try his luck here. Thanks, in small part, to the recent exposure of St. Louisans to good bakery breads by the Saint Louis Bread Co. and, in large part, to the skill, insight and hard work of Josh and Jill Allen and their partner Austin Seitz, the Companion Bakery was born.

The bakery is located at 4555 Gustine (a few good blocks south of Gravois) in the old Allen Foods Headquarters. Most of the bakery's business is in wholesale. While the rest of us sleep they are

shipping hot, fresh rosemary and olive oil, fougasse, farmer's rye, sourdough and all your favorites to grocery stores, restaurants and farmers' markets. However, the bakery is open for retail customers between 7:00 am and 12:00 PM everyday.

According to Jill Allen the neighborhood has been very good to them. The bakery specializes in traditional European style breads. Many of the southside's first and second generation Europeans frequent the bakery once or twice a week. I, for one, was truly impressed at how many of their regulars Jill and Josh could list by name.

Amazingly enough none of the three Companion founders had had any managerial experience when they began their endeavor.



Jill and Josh met and married in San Francisco, the sourdough capital (Jill is a California native), and Austin is brother-in-law to the Allens making their bond more than just commercial. Their success, says Jill, came out of Josh's belief in their product. They really enjoy their role as neighborhood bakers, taking pride in their craft.

If you have not yet tried the Companion Bakery's many wonderful breads the opportunities are everywhere. You can find their baguettes, rolls and loaves at your local Schnucks, Dierbergs, Straubs or Vivianos on the Hill. However, you have, doubtlessly been served their breads in one of the many St. Louis restaurants that carry them. Wherever you shop I suggest you trade in your Wonder for bread baked fresh everyday the way its meant to be.

Save \$5.00 with this ad! BEST FRIEND PET CARE

"Let Me Be Your Best Friends Best Friend"

- Pet Sitting in Your Home
- Canine, Feline, Avian and Exotics
- Dog Walking
- Training
- Consultation

Insured and Licensed
Trained Veterinary Technician
Member-Association of Pet Dog Trainers
Certified Small Animal Dietitian

Cinder Wilkinson 664-8607
e-mail: bestfriend@dslab.com

Kurt E. Wolfgram

Attorney at Law

Personal Injury
and

Commercial Litigation

Suite 1106
222 South Central
St. Louis (Clayton), MO 63105

Telephone (314) 721-8899
Facsimile (314) 721-0703

50/50 SIDEWALK

The definition of the 50/50 Sidewalk Program is: the program in which each resident and their alderperson invest in the maintenance of their sidewalk. That is, the property owner and the city each own 50% of the sidewalk in front of their home. The dollars are allocated from the aldermanic pool of money. This program is a most inexpensive way to complete work owners often plan to do anyway. It keeps inspectors from citing owners for uneven and cracked sidewalks.

Contacts are Alderwoman Marge Vining at 622.3763, and Street Department, Wallie Hose at 647.3111. Programs are also available to dig tree wells.

STAR WARS TRILOGY REVIEW

by Nick Abbott

Forget that the release of the remastered Star Wars Trilogy has made almost 210 million dollars in seven weeks. The fact that this was just an excuse for trying to repeat the films' original success is irrelevant. They are still immensely entertaining.

I have always enjoyed the original Star Wars Trilogy. It had interesting and bizarre characters, great special effects, lots of detail (e.g., the wear and tear on the ships and other minor things), and most of all: It never took itself too seriously. There was easygoing humor during the most critical moments. You didn't have to analyze the plot because it was fun, and nothing would have been accomplished by it.

I believe that the remastered version has lost none of the above mentioned qualities and has added new flamboyance to the films. It was fun seeing the new things and looking for new detail. The dinosaur-like beasts of burden and the improved cityscape of Mos Eisley in the first release, the Wampa in the frozen planet of Hoth in "The Empire Strikes Back", and the new Sarlacc in "Return of the Jedi" made the whole thing just that much more believable.

Some criticize the reissuing as merely an excuse to make more money from the inexhaustible profit cauldron the Star Wars films seem to be. That is true but

...Who really cares?

OUR PARK

by Audrey Anderson

Before I moved to the City, I seldom went to a park except for trips to Forest Park for special events or the zoo. But now that I live in Tower Grove Heights, I visit the Tower Grove Park 4-5 times a month and even more during the summer. I'm not alone. The park is swirling with activity. Bring your Frisbee, horseshoes, corkball and bat and shake off those winter doldrums. The paved path around the exterior of the park is about 4 miles long and it is perfect for walking, running, skating and biking. Some of you may want to go around twice and some of us may want to cut it short and take one of the many sidewalks that angle through the park.

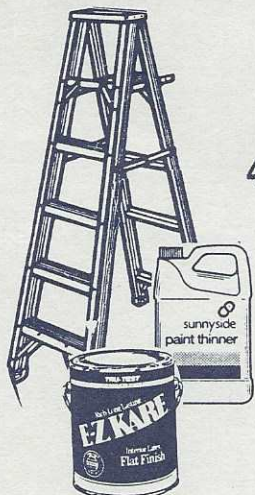
Henry Shaw gave us this beautiful piece of land and he fashioned it after an English walking park. The Friends of Tower Grove Park have done a remarkable job of restoring Mr. Shaw's gift. The gazebos are brightly painted, the

bandstand looks great and Mr. Shaw's favorite composer all have their noses in place. Did you know, the pond, its ruins and the surrounding gardens are the most popular place in St. Louis to have wedding photos taken?

Upcoming and Ongoing Park Events:

- April 23 Shakespeare's Birthday call 771-2679
- May 26 Memorial Day Concert - Compton Heights Band - bandstand area 3 p.m.
- June 23 through August 11 - free Monday evening concert series. All concerts are held at the bandstand and begin at 7:30 p.m.
- Some of the finest tennis courts in the area attract players from all over St. Louis. For information call 776-8722.
- To reserve a picnic space, call 771-2679.

If you are interested in joining The Friends of Tower Grove Park, call 771-2679.



**OAK HILL TRUE VALUE
HARDWARE & PAINT CO.**
4100 CONNECTICUT ST. AT OAK HILL
776-0741

HOURS: Monday thru Friday 8 to 5:30
Saturday 8 to 5

**A FULL SERVICE FAMILY OWNED
HARDWARE STORE**

SERVING SOUTH ST. LOUIS FOR OVER 60 YEARS

We Specialize In:

Plumbing, Electrical, Builders
Hardware, Lawn & Garden, Hand &
Power Tools, Locksets, Cleaning
Supplies, Bulk Nails & Fasteners,
Paint and Painting Supplies.
SPECIAL ORDERS WELCOME
MASTER CARD, VISA, &
DISCOVER ACCEPTED

Our Services include:

Key duplicating
Glass & Plastic cutting
Window & Screen Repair and
Fabrication
Pipe Cutting and Threading
Delivery within our area
Window Shade Cutting
Sharpening Service

A MESSAGE FROM REP. PAT DOUGHERTY

Dear Friends,

As in the past, I will try to keep you updated on the happenings in the Missouri Legislature. this year legislation seems to be moving at a snails pace, but then the days are ticking away at a much faster speed. Much of my time, this year has been spent on welfare reform and the implementation of the federal "Personal Responsibility and Work Opportunity Reconciliation Act of 1996".

I am sponsoring the legislation that encompasses the federal mandates related to Child Support Enforcement. This legislation includes the much talked about "license revocation" or suspension, for non-payment of support. If a non-custodial parent falls behind in their support obligation by \$2,000 or three months, the Court of the Division of Child Support Enforcement may begin action to

suspend all license issued by the state of Missouri. This includes all driver, professional, occupational and recreational licenses. The non-custodial parent has rights under this law and will not have their licenses suspended if they make a good faith effort to work with the Court of the Division in satisfy their arrearage.

Another price of legislation I am working on is a revamping of the divorce and child custody laws in Missouri. Our current system is broken and is in desperate need of repair. I have proposed legislation that attempts to take away some of the adversarial nature of the divorce process. It gives the parents the responsibility for making sure that the children of their marriage have continuing and meaningful contact with both parents after the divorce. This parenting plan system have been working in the state of Washington for the past six years. This legislation is still being discussed at the committee level, but I am hoping

to have it passed by the committee next week.

If you have any question on issues the legislature is facing, please call my office at 573-751-3599.

IS YOUR CREDIT CARD SAFE ON THE INTERNET?

So you want to buy something from a company on the Internet. Is it safe to use your credit card?

A recent article in the on-line magazine "Internet Life" (<http://www.zdnet.com/yil>), produced by Yahoo! recommends shoppers find out, via e-mail or phone, what type of Internet "server" a merchant is using, and whether that server is SSL (Secured Sockets Layer) compliant. Arguably the best-known and most secure SSL is Netscape Commerce Server.

Continued on Page 14



CONDITION AND COLOR, TOGETHER AT LAST!

SHADES EQ™ Conditioning Color Gloss

It's the haircolor that thinks it's a conditioner. Brilliant, super natural color provides shimmering, conditioned shine in a palette of fabulous shades. Ask us about the Shades EQ Conditioning Color Gloss that's right for you.

- Professional Hair Care
- Manicures • Pedicures
- Body Waxing & Makeup
- Skin Care & Facial Services

DAVID'S DESIGN SALON

2223 S. Grand Blvd.
St. Louis, MO 63104
314-771-9001

REDKEN
5TH AVENUE NYC

THE MILLENNIUM CRISIS

By Don Hardin

It's Saturday, January 1, 2000. A quiet day at home is in order, after last night's revelry. You decide to tape a movie, but you can't get the VCR to program. You run up to Schnucks and notice it's very cold in the store and the scanners aren't working.

It's cold in the office when you get to work on Monday and that extensive spread sheet with all those complex equations for calculating your customers interest payments is all wrong. When you get home the mail is waiting for you. You open a letter from VISA which says your account has been closed because you are \$156,000 behind in your payments. WHAT IS GOING ON?

It's the Millennium Crisis at work. In the sixties when computer programming blossomed in earnest for the home and work market, some programmers gave little thought to the year 2000. Programs which depended on dates for calculations or programs that depended on dates for timing their functions defined the year with two digits.

1966 was entered as 66; 1999 was entered as 99. But what about the year 2000, 2001 etc.? If the computer thinks the year is 01, is it 1901 or 2001?

Now, in 1997, we all depend on computers much more than we realize. Your VCR needs to know what year it is to be able to program properly. Heating and cooling systems in large buildings have to know what day of the week it is to control these systems for reasons of economy. Financial institutions calculate payments, interest and due dates with computers.

If the computer thinks the year is 1900 instead of 2000, you are 100 years behind in your payments. The good news is that you just got 100 years of interest on that modest savings accounts.

It is surprising to think that some of these detail oriented geniuses (computer programmers) did not think about the consequences of not accurately defining something as basic as "what year is it" in these all controlling computer programs.

Well, hindsight is always 20/20. Newer computer software (and VCR's) have eliminated this problem, but there is a lot of old software out there waiting to deliver that 100 year late notice. Companies and the Government are working to update or replace inadequate computer programs. The reports are that these problems SHOULD be fixed in time to avoid the Millennium Crisis. I hope so. But I'm still nervous about that Personal Property Tax bill just after the turn of the century.

BARB POTTS ON SPRING CLEANING

It's Spring, It's Easter, the birds are chirping, the flowers are blooming and its Tower Grove Heights time to blossom. Soon two major events will be upon us.

May 17 Operation Brightside Blitz

May 17 - Grand Oak Hill House Tour

Barb encourages all of us TGH residents to start fixing those broken windows, painting those pillars, calling Barb and Marge for help with lids to those dumpsters.

A strategy Barb recommends is for blocks to start helping blocks. That is, back to back each block needs to help each other; i.e. Hartford helping Juniata, etc. The outcome is more work gets done, more neighborhood socializing occurs and more fun!

According to Barb, crime does not occur in neighborhoods where there is visibility. When neighbors are out raking, sitting on porches, investing in their neighborhood, crime goes away. This Call to Action from Barb to all of us is an effort to reduce the crime we do have, by calling the police when we do see something questionable. Per Barb, neighbor helping neighbor makes or breaks a block.

THINK ABOUT OUR FUTURE ENVIRONMENT
RECYCLE
NOW!

ARCHITECTURAL TREASURES

by Don Hardin

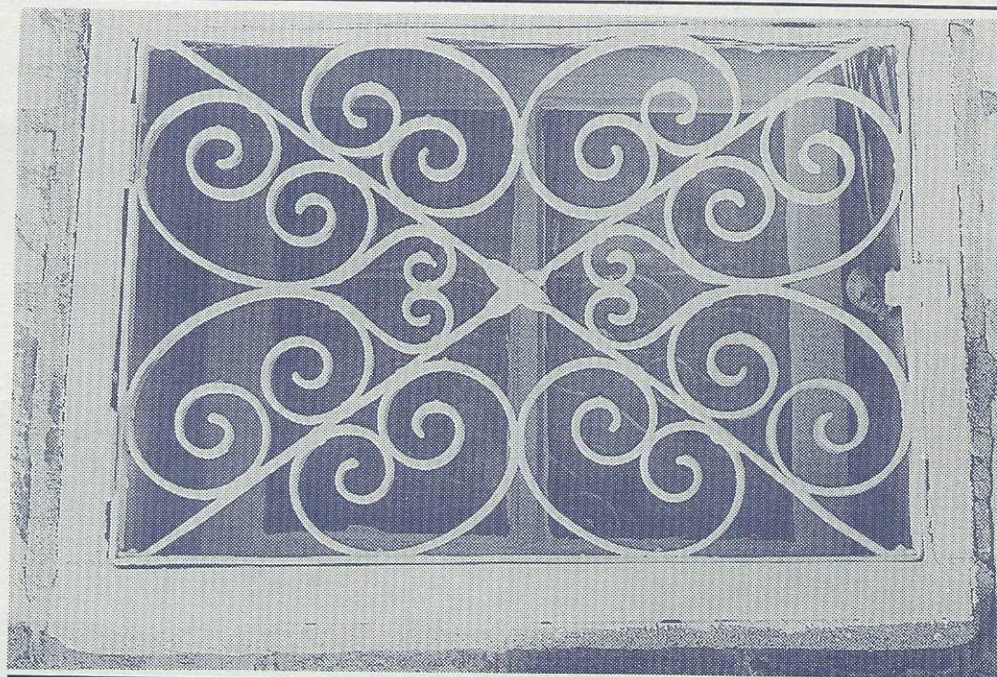
Over Christmas I went to New Orleans. Only there have I ever seen architecture to rival St. Louis (the Heights too). This beautiful iron work is on a basement window on Spring.

Don't Worry ...Continued from Page 7

has prescribed it for about 600 patients, including his mother and grandmother, has summarized the European findings in a book "The Arthritis Cure", that promotes the combination as part of a 9 point program for combating osteoarthritis.

Theodosakis emphasizes that not every patient responds to the remedy and not everyone who does respond ends up free of pain or restricted movement. But he cites a number of placebo-controlled studies that showed improvements in significantly more patients given either glucosamine or chondroitin than in those who received a look-alike inactive capsule.

Although glucosamine with or without chondroitin has been used for years by veterinarians, mainly in horses and dogs, most American doctors have kept their distance. The substances cannot be patented, which may be why drug companies have not supported research.



Historic...Continued from Page 5

lake (which can be seen today.) The lake was paved over and lighted tennis courts were constructed in 1933. The tennis courts closed in 1942 as a wartime precautionary measure and never re-opened due to a lack of funding to restore the deteriorating surface.

In the late 1960s and early 1970s, scores of trees were cut down and the steps leading to the top of the lake at Grand and Lafayette Avenue were chopped off due to the construction of Interstate 44. "The Naked Truth" statue, which used to sit near Lafayette Ave., was also moved

during the highway construction.

Usage of the reservoir dwindled over the years until only small portions of the city's lowest elevations were serviced. With two new water tanks being built, the pond will soon become a vital part of St. Louis again.

When Reservoir Park becomes spruced up and ready to be explored, perhaps we can work on re-routing all of the cars which currently speed along Grand every day. They certainly will not blend in very well.

Information for this article was obtained from the Southtown Word and the St. Louis Post-Dispatch.



Custom-Fitted Golf Clubs

Professional Quality & Performance
For The Amateur Budget

The Latest in High-Tech Components & Design

Convenient Location

5 minutes from the Arch 5 blocks south of Hwy 44

Tues-Fri 9-6, Sat 9-4

CustomWorks Golf

2300 S. Grand Blvd. St. Louis, MO 63104 314-773-GOLF (4653)

773-GOLF

TOWER GROVE HEIGHTS NEIGHBORHOOD ASSOCIATION

President: Sara Langan
President Elect: Mark Abbott
Secretary: Diane Hurwitz
Asst. Secretary: Jodie Heliker
Treasurer: Suzanne Golemb
Past President: Joe Thele

COMMITTEE CHAIRS

Block Captains: Sara Langan
Fundraising:
Neighborhood Imp:
Promo. & Marketing:
Publications: Don Hardin

BLOCK CAPTAINS

3600/3700 Arsenal
Diane Hurwitz (3640)
3800 Arsenal
Elliott Blevins (3850)
Fredric Rissover (3850)
3600/3700 Hartford
Mark Abbott (3648)
Ken Johnson
Rocky Keel
3800 Hartford
Jenny Young
3600/3700 Juniata
Sara Langan (3639)
Jim/Alice Mooney
3800 Juniata
Jay Rosloff
3600/3700 Connecticut
Lisa/Kevin Jokisch
3800 Connecticut
Curt Gilker
Sherry Taylor
Bill/Noel Shamletter
3600/3700 Wyoming
Paddy McPhillips (3668)
Brian/Betsy Vanderheyden
3800 Wyoming
Linda & Peter Fick
Nancy Dietz
3600/3700 Humphrey
Sue Clavin
Mary Fazholz
3800 Humphrey
Robert Reed
Marcia Recks
3600/3700 Utah Place
Robin Schrager
3800 Utah Place
Susie Gudermuth (3725)
Veda Lynn (3855)

Leather...Continued from Page 8

tanning and mineral tanning. (somewhat like us suntanning, because this is the adding color phase!) Vegetable tanning are dyes, or tannins found in the bark and wood of certain trees. Today, the mimosa tannin is used more commonly. It's found in the bark or various species of wattle tree. In traditional method, veggie tanning is done in pits, with the hides being suspended in a series of vats of tannin solution which get progressively stronger. The process is slow and may take several weeks before the hides are fully tanned.

Mineral tanning is done with the

Internet...Continued from Page 11

On your end, you should be using the latest encrypting version of one of the major browsers, such as Netscape Navigator or Microsoft's Internet Explorer.

What happens if your new bill shows charges for items you never ordered?

Whether your card was intercepted by a hacker or lifted by a pick-pocket, your rights are the same. The quicker you dispute, the better.

Waiting a week or two will leave you liable only for the first \$50, but report the fraud within 24 hours, and both MasterCard and Visa will instruct the bank that issued your card to waive all fraudulent charges. Be forewarned, however; claiming a case of credit fraud where there isn't one is considered fraud in itself and is a federal offense.

A new software program called SET is planned to make the Internet

aid of basic chromium sulfate, a mineral salt which penetrates the hide very rapidly, taking only twenty-four hours. (whew!) The leather comes out a pale duck egg blue color, and after suitable processing, yields fine, soft leather!!!

Now, the hides are sorted for quality, the best hides being finished full grain, while lower quality hides are given a textured finish. Any hides that "don't cut the mustard" are sold to tanneries that make other leathers for the shoe industry, or small leather goods like the wallet and purse makers. Now all that's needed is color! and that will be our next topic, next time, class!

more secure. SET software will "reside" in your computer, and in the merchant's and the bank's network computer. Your computer's SET software will have a coded sequence, or a "key", unique to you, that will be recognized by the SET-equipped computer on the other end.

Until then, you should stick to some simple rules:

- Find out where, in real space, not cyberspace, the merchant is located. If the only address on their Web site is a post office box, be wary: it is very easy for such companies to disappear, making it nearly impossible to track them down for redress.
- Don't give out your credit card number via e-mail (it is too easy for someone to forward your number). Remember to think of e-mail as a postcard many people along the way can read what you're sending.

(Reprinted from the Central West End Word.)

NOTE CHANGE OF ADDRESS

Tower Grove Heights Gazette
P. O. Box 63002
St. Louis, MO 63163

NONPROFIT ORG.
U. S. POSTAGE
PAID
ST. LOUIS, MO
PERMIT NO. 3794

Printed on Recycled Paper