

Tower Grove Heights Gazette

Grand to Gustine

Arsenal to Utah Place



December 10, 1994

Volume 7, Number 2³

HOLIDAY IN THE HEIGHTS

By Janice Nesser

Turn on your porch lights, set out your luminarias and get your voices in tune for tomorrow, the Heights will be a flutter with holiday activities during our annual "Holiday in the Heights" celebration.

This Sunday, December 11 from 4 to 9 p.m., the Tower Grove Heights Neighborhood Association will be sponsoring "Holiday in the Heights", a celebration of city living, the neighborhood, and the holidays all rolled into one. This annual event serves a three-fold purpose for our neighborhood: it promotes city living and our neighborhood; it instills a sense of community for our residents; and it is a charitable event. Last year, over 500 canned goods were collected and distributed to needy families in our area. And addition to all of that, it's just plain FUN!

Kicking off the day's activities, neighbors and friends will be serenading the Heights between 4 and 6 p.m. Be sure to have your canned goods ready and your porch lights on so they will stop and share a tune. Or if you would like to join in the carolling fun, it's not too late! Contact your block captain (listed on the back of the Gazette) or meet at the American Legion Hall at Spring

and Wyoming between 3 and 4 p.m. to pick up carol books and have some hot cider to warm you on your melodious journey.

From 4 to 6 p.m., Santa and his merry band of elves will also be making appearances throughout the Heights. Keep your eyes peeled for him on the neighborhood streets or

*The streets
will
be aglow...*

come visit him at the neighborhood get together that evening.

The streets will be aglow between 4 and 9 p.m. during the luminaria display and friendly neighborhood lighting competition. Luminarias will line the streets of the Heights lighting the way for the carolers, concert goers and judges for our lighting competition. This year's lighting competition plans to be as illuminating as ever. Prizes will be presented

in a variety of categories. Each winning house will also be presented with a winning red ribbon to display on their front lawns. Be sure to look for the ribbons to see which of your neighbors have won. And, don't forget, turn on your holiday lights and light up the Heights!

A beautiful, candlelight holiday concert will be presented at 6 p.m. at the First Divine Science Church, 3617 Wyoming. The program will include a wide variety of holiday music from traditional carols to inspirational to a classical guitar rendition. Admission to the concert is 1 canned good per person.

Immediately following the concert, at 7 p.m., a neighborhood get together will take place in the church basement. Come and join your neighbors and friends in some good old-fashioned holiday cheer. Santa will make a special appearance. There will be music, refreshments and fun!

"Holiday in the Heights" promises to be chock full of things that make this time of year so special. So come on out and join your neighbors and friends in some special holiday moments. Make "Holiday in the Heights" part of your holiday tradition. See you there!

**The Tower Grove Heights Gazette
Publications Chairperson:**

Don Hardin

Editor: The Staff

Graphics Editor: Michele Kerr

Staff: Marilyn Abbott, Tom Booth,
Elizabeth Braznell, Benjamin Chu,
Richard Clinebell, Stephanie Gavin,
Don Hardin, Jodie Heliker, Tricia
Heliker, Rich Iezzi, Terry Mayes, Mar-
gie Meyer, Victoria Miles, Janice Nes-
ser, Fredrick Rissover, Jay Rosloff,
Ed Schroeder, Mary K. Schroeder

Graphic Artists: Michele Kerr, Janice
Nesser, Mary K. Schroeder

Database Manager: Tom Booth

Business Manager: Donna Mayes

Circulation Coordinator:

Typesetting: Mary K. Schroeder,
Margie Meyer, David Nitzche, Don
Hardin

The Gazette is a non-profit publication
that is published bi-monthly by the
Tower Grove Heights Neighborhood
Association. For information concern-
ing advertising call Donna Mayes at
664-5449. Your letters and comments
are always welcome at the Gazette.
Mail them to:

The Gazette/TGHNA 3203 S. Grand
Blvd., Suite 103 St. Louis MO 63118



LAST MINUTE CHRISTMAS SHOPPING ON GRAND



**with Victoria Cusumano Miles
and Tom Booth**

Do you put off your holiday gift-
buying until the last minute? Or are
you one of those who has everything
finished for Christmas by Halloween?

Either way you're in luck if you live
in our neighborhood! Grand South
Grand shops have something for
everyone. Last year I started at
Botanicals on the Park and shopped
all the way up to Cheap Trx covering
everybody on my list! I didn't have to
go to one mall or department store -
NO long lines, NO parking problems,
GREAT selection and service every-
where I went with gift-wrap included!!
Besides, I really like the idea of
trading in the community where I live,
investing in my own - helps the
neighborhood and the neighbors. I
had fun too, the spirit of the season
just sparkled in the eyes of shopkee-

pers and patrons alike - (I think that
happens all year "On Grand" anyway,
don't you?) Do your holiday shopping
around here and when you get hungry
or want coffee-break - you're close to
your favorite choice of cuisine, cappu-
cino, espresso, teas, etc. (Restaurants
offer gift certificates too you know)...

Here are a few suggestions. The
best place to start a Christmas shop-
ping adventure is certainly **Botanicals
on the Park**. It's new location in the
Parkgate development presents the
same taste and charm we've come to
expect, only in a larger venue.
Nothing will get you more quickly into
the holiday spirit than a visit to Botani-
cals.

Got music-lovers on your list? Hit
Streetside Records for their favorite

continued on page 9

Doing More Than You'd Ever Imagine



Missouri Botanical Garden

EDUCATION RESEARCH HORTICULTURE

Imagine how you can help. Call 577-5100 for information
on becoming a Garden Member or volunteer.

**4344 Shaw Boulevard
St. Louis, Missouri**

By Tom Booth

The November general meeting of the Tower Grove Heights Neighborhood Association was held on Sunday November 20th at 7 p.m. at the First Divine Science Church at 3617 Wyoming. The agenda for the evening was the election of new officers and guest speaker Frank Siano, President of the Grand South Grand Business Association.

The rainstorm that evening limited attendance to a small group of about twenty, but the election of officers was completed nonetheless. With a lone dissenter voting "no" to each of the officers, the nominees were all elected for the year 1995. The winners were:

Joe Thele, President Elect

Diane Hurwitz, Secretary

Donna Mayes, Assistant Secretary

Don Detsch, Treasurer.

Outgoing President Margie Meyer began the meeting by asking for nominations from the floor. No nominations were offered, so she

GENERAL MEETING and Election of Officers



continued by introducing the nominees. Joe Thele and Don Detsch were present, but Diane Hurwitz and Donna Mayes were not. She described a number of activities planned for the Holiday in the Heights celebration on Sunday December 11th, and highlighted the holiday concert taking place in the First Divine Science Church following caroling. In response to a question from the audience, Margie said the organization was planning on making babysitting available during the concert. She drew attention to the lunaria stuffing party being held on December 5th at 6 p.m. at the legion hall at the corner of Spring and Wyoming; as well as the Gazette folding party on Thursday December 8th at 7 p.m. at Michelle and Bill Kerr's, 3636 Utah. Anyone interested in helping with either of these fun activities is warmly invited to take part.

Incoming President Jean Iezzi then talked about the Cookies for Cops program taking place during Thanksgiving, Christmas and New Years. She said goodies other than cookies can be contributed.

Pete Ficke gave the results of the election, and the winners were applauded.

Jean Iezzi then informed the gathering that the guest speaker, Frank Siano, was to have talked about recent developments in the business district on Grand Avenue, but was not present. Thereupon those in attendance speculated on the future tenant of the corner space of the new Parkgate development, and discussed some problem buildings in the area. Joe Thele explained a situation concerning a proposed restaurant in the neighborhood. The proposed restaurant's application for occupancy was opposed by a number of area residents, and its application was not approved. The meeting ended shortly thereafter.

Newly Expanded

SHELTON DAVIS

S A L O N

"Voted One of the Top 10 Salons in St. Louis"—Riverfront Times
"Featured Nationally in Salon Today Magazine"

In Addition to Professional Hair Care Services We Now Offer:
Manicures, Pedicures and Swedish Massage Therapy

Coming Soon:

Make-up, Skin-care & Facial Services

*for an appointment call—***771-4700***—Evening Hours Available*

Shelton Davis Gift Certificates Available—The Perfect Gift!

SHELTON DAVIS SALON •

3210 SOUTH GRAND

HOLIDAY HAPPENINGS

December calendars are pretty full for most people, but sometimes it's good for the soul to call a halt to the "have tos" and schedule in a "just for fun" event. Scan the list below for something that is not a part of your usual holiday fare and check it out. Who knows where that could lead.

FESTIVAL OF HOLIDAYS, a free program featuring activities and displays on how different cultures celebrate the winter holidays is presented each weekend Nov. 25-Dec. 18 at the St. Louis Science Center. 289-4400..

GINGERBREAD VILLAGE, Nov. 25-Dec 18 at Chesterfield Mall. Open 10 a.m. to 8:30 p.m. Mon-Sat and noon to 5:30 p.m. on Sunday. \$2.50 569-3215.

SANTA'S MAGICAL KINGDOM, features millions of lights and 30 holiday scenes through Jan. 8 at Yogi Berra's Jellystone Park, next to Six Flags in Eureka. Open Mon-Thur. from 5:30 to 10:30 p.m. and Fri.-Sun. from 5:30 to 11:00 p.m. \$12.00 per car and \$25.00 per extended van or minibus. 938-5925.

VICTORIAN CHRISTMAS AT THE OLD COURTHOUSE, features authentic Victorian decorations, holi-

day tours and free concerts throughout the season. 425-4467.

BREAKFAST WITH SANTA AT THE DOG MUSEUM an event for dog lovers and their canines, is held from 10 a.m.-2 p.m. Dec. 10 at the museum. \$6.00 per dog. 821-3647.

A GILDED AGE HOLIDAY FETE, featuring decorations, crafts and entertainment of the period, is held from 10 a.m.-2 p.m. Dec. 10 at the History Museum in Forest Park. Free 454-3135.

WINTER HOLIDAY AT FAUST PARK, featuring lanterns, campfires, carriage rides, strolling minstrels, carolers and storytelling in a historic-village setting, is held from 5-9 p.m. Dec. 3rd & 4th at the Faust History Park. \$1-\$7. 532-1030.

COOKIE SPREE, 8th annual holiday street festival featuring carriage rides, clowns, carolers and more is held from 10 a.m.-6 p.m. Dec. 3rd & 4th on Cherokee Street between Lemp & Jefferson. 771-5121.

CAROLS IN THE GARDEN, the sounds of holiday music fill the air as carolers roam the Garden and revelers make their way along candlelit

paths to Tower Grove House, where they are welcomed by Henry Shaw. Santa Claus will be on hand a Spink Pavilion to greet young visitors with goodies and treats. Entertainment includes the popular vocal group "Pieces of 8" Dec. 6th & 7th from 5-9 p.m. Admission is by paid reservation or pre-event ticket purchase only. Call 557-5125 for reservations. Candlelight tour is \$9.00. Festival only \$4.00 for members, \$6.00 for non-members, \$2.50 for children 12 and under.

HOLIDAY DECORATING, 10 a.m. Schoenberg Auditorium Missouri Botanical Gardens. Demonstrations on how to create your own festive holiday decorations. Nov. 30th. Free, for members only.

MID-AMERICA DANCE COMPANY PRESENTS "THE MAD-CRACKER", 11 a.m. Schoenberg Auditorium. A treat for the whole family. Free, for members only.

HOLIDAY WREATHS, Dec. 3rd-Jan. 1st from 9 a.m. to 5 p.m. daily at the Ridgeway Center. Spectacular holiday wreaths created by some of the finest floral designers in the St. Louis area including our own wonderful BOTANICALS ON THE PARK.

Happy holidays!
From Trish Heliker

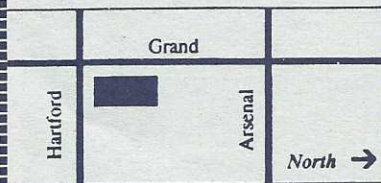


Over 7,000 Movies & Games

Free Popcorn

Free Membership

Free Parking in Rear



3120 S. Grand • 664-2844

the Studio

3815 Kosciusko St. Louis, MO 63118 314-664-1966

Wayne Carl Huber, Artist/Eduactor

Offering day and evening lessons in drawing; design; color theory; oil, acrylic, and watercolor painting; and printmaking for adults. Saturday lessons in drawing, painting, and design for children.

• AMERICANA • ART • BIOGRAPHY • CHILDRENS • CLASSICS •

JUST ARRIVED...THE BOOKSTORE THAT LOOKS AND FEELS LIKE HOME



BOOKS & CO

3196 So. Grand
St. Louis, MO 63118



At Grand & Wyoming in the Grand-South-Grand District just south of St. Louis University & The Botanical Garden

OPEN DAILY (S:12-5 M-Th:12-8 F-S:10-10) 771-3196

• POETRY • PLAYS • NOVELS • MYSTERIES • MUSIC • MOVIES •

• COOKING • ESSAYS • HISTORY •

THE REHABBER

Accommodating the Commode

by Jay Rosloff

Nope, not an article about leaving the seat up or down (forget it, men; save your ammunition for a fight we can win!), but what to do when the toilet isn't working right. The exact origins of the porcelain tuba are lost--so don't bother me with the eponymous legends of Col. John Crapper--but it sure is a nifty appliance. Whether the latest EPA water-saver or Victorian high-tank model, they all work by following the same laws of hydraulics known to the ancient Greeks.

The tank is a reservoir with a flush valve held in place by the weight of water above it. Once loosened by a trip lever, the valve floats until the water is gone. The amount of water in the tank is governed by an inlet valve, also connected to a float. As the water rises, the float closes off the water inlet. If the inlet valve fails to close, or leaks after closing, an overflow allows

the water to drain to the bowl.

If you constantly hear running water, you need to determine if the flush valve is not sealing or if the inlet valve is seeping. To do so, one begins by turning off the supply of water to the tank. If the tank empties, the flush valve is bad. If the tank remains full for a half hour or so, turn the water back on and try to adjust the float at the inlet valve.

To replace a flush valve, empty the tank and remove the ball or flapper. Check to see that the seat of the valve is smooth. If it, too, needs replacement, remove the tank and unscrew the large nut holding the valve seat in place. Replace all parts with similar pieces and all new gaskets and seals--substitution of valve types may or may not be successful.

Replacement of the inlet valve is merely a matter of disconnecting the

water feed and unscrewing the nut underneath the tank. Also replace with similar parts as some devices may not allow the water to rise as high as you need.

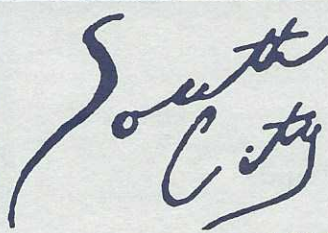

Do not use the toilet as a dispose-all. Never try to flush any non-tissue paper. Toys, towels, cigarettes, and dead pets may clog the twisty siphon trap in the bowl. NEVER use caustic drain cleaners to clear the line. If fifty thrashes with a plunger won't free things up, it's time to get serious.

If you need to remove the bowl from the floor (note: if your bowl is leaking at the floor line, or the ceiling below is showing signs of water damage, this may be a good idea anyway), first shut the supply of water to the tank. Drain the tank and bowl. A bucket, sponge, and rubber gloves are suggested. On either side of the bowl at the floor you will find two or four caps. Remove these and loosen the nuts underneath. WD-40 or other penetrating oil is suggested. With the nuts removed, gently rock the bowl to break the seal and lift the bowl off the floor flange. Place the bowl on newspaper as the seal remnant is quite messy. The seal is a ring of wax. Clean off the remains of the old seal and place a new one on the bowl.

Inspect the floor flange. If it is broken, repair kits and partial flanges are available at plumbing supply specialists. If the flooring is rotted, major surgery may be called for. Ask a pro or an experienced neighbor for advice. If the flange can be set soundly, replace the bowl taking care not to smash the wax ring. Tighten the nuts gently, remembering that the bowl is little stronger than a teacup.

If you do break the bowl or otherwise need to replace one, measure from the center of the flange to the wall. This measurement is called the "rough-in" and is the one dimension critical for replacement. Older bowls usually are 14"; modern ones 12" to 13".

Tool Tip: Enviro-Care or other enzyme-based drain products will keep your system running without damage to your drains. Read the instructions carefully.



DINER

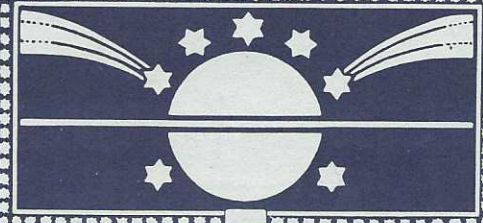

Cocktails Espresso Cappuccino

3141 S. Grand • 772-6100

NOW Open 24 Hours

Breakfast / Lunch / Dinner

LIVE MUSIC



Dear Neighbors,

It's hard to believe that it's been two years since you elected me as president-elect for our neighborhood association. In the past two years we've done a lot of good things, and it's been a lot of fun. It seems that there is never a slow time when it comes to the association. The best part for me has been getting to know the many really good people who populate this neighborhood. New events like the Pride in Place Awards and the Good Neighbor Awards really brought home how many hard working and caring neighbors we do have here in Tower Grove Heights.

I want to thank everyone who has participated in the many parties and events that take place throughout the year. And to those who have been thinking about joining. I urge you to do so now. There is no better way that I know of to get to know your neighbors and do some good for the community in which we live.

And now that you know who I am, I want to take this opportunity to invite you to call me anytime if you have any questions or concerns. I look forward to continued involvement with you and the association.

Sincerely, Margie Meyer

**Piccadilly
ANTIQUES**

*Specializing in 19th Century
Furnishings, Decorative Arts
and Collectables*

Hours Thru July:
Sat. & Sun.
10:00 a.m. to 6:00 p.m.
Starting August 4th:
Wed. - Fri.
6:30 p.m. to 9:30 p.m.
Sat. & Sun.
10:00 a.m. to 6:00 p.m.

"We Accept Consignments"
Call 771-5266

3210 South Grand Avenue, St. Louis MO

FINANCIAL FOCUS - Goals and Objectives

dollars we need.

Present investment decisions should be influenced by our future needs.

There's a direct relationship between the amount of money we wish to accumulate and the number of years we have to accumulate it.

To illustrate, let's assume you wish to accumulate a \$12,000 college education fund for your newborn child. You believe the child will enter college in 20 years, and you're expecting an annual rate of return of 12 percent. To reach this goal you'll have to invest \$12.13 per month. If you wait five years--now you have only 15 years to meet your goal--you'll have to invest 24.02 per month, and if you procrastinate another 10 years, you'll have to invest \$146.93 per month to achieve the same dollar goal.

Time can be a real asset in planning for our children's education or our retirement--if we don't let it slip away! The more time we have the fewer

Advice we receive on investments should be weighed in relation to the source. I tend to discount advice from the never-do-wells or one stands to benefit strongly on the advice he or she distributes.

Investing, as we've mentioned before, should not be based on hot tips or hunches. When you select a broker or adviser, ask for his or her philosophy on investing--get to know the broker or adviser you choose. Once you trust your broker, take him or her into your complete confidence and explain in detail your goals and resources. The more your adviser or broker knows you and what you want, the better he or she will be able to serve you. It's your money, so ask questions and get answers! Don't be shy!

Article provided by Tom Borich, Investment Representative, for Edward D. Jones & Co.

Five good reasons to invest with Edward D. Jones & Co.

1. Common Stocks

Over time, common stocks have historically outperformed other types of investments.

Call for Information

2. Federally Insured Certificates of Deposit

Available at competitive rates from institutions nationwide. Issuer information available on request. Subject to availability. May be subject to interest penalty for early withdrawal. \$5000 minimum. 5 year.

APY **5.74%****

Simple Interest **6.45%**

3. Mutual Funds

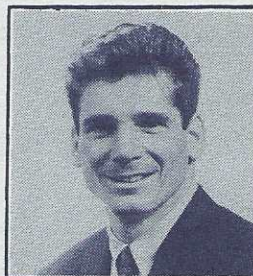
Professionally managed and diversified.

Call for Information

4. Federal Income Tax-free Municipal Bonds **6.30%***

Interest on these bonds may be subject to state and local taxes.

5.



Please call or come by and visit about how you can take advantage of these attractive investments.

TOM BORICH
3190 SOUTH GRAND
(314) 773-3767

* Rate expressed as the lower of yield to maturity or yield to call effective 8/22/94 Subject to availability. Market risk is a consideration on investments sold prior to maturity.

** Annual Percentage Yield.

Edward D. Jones & Co.®

Member New York Stock Exchange, Inc. and Securities Investor Protection Corporation



GIVING A LITTLE EXTRA



By Stephanie Gavin

The holidays are in full swing already, creating stress, chaos, excitement and tight budgets. But it is the season of giving, and even if time is scarce and money is scarcer, there are many people less fortunate in our city. Just a small token of time, money and/or gifts could be enough to make this Christmas a truly memorable one for a needy family. Many organizations offer an "Adopt-a-Family" program in which you are given the ages, sex, and sizes of an entire family for whom you buy gifts. A \$15-\$20 gift per person seems to be about average, along with providing food for a Christmas dinner for the family.

Following are a few opportunities for extra giving in St. Louis this year.

St. Vincents Church

922 Park Ave.
St. Louis, MO 63104
231-9328



Most local churches have their own St. Vincent de Paul's Societies, but the St. Vincent de Paul church devotes endless hours of service all year long to the needy in St. Louis City. Together with the Guardian Angels Settlement and the Kingdom House, they have an extensive, well-organized Christmas Basket Program every year. They would appreciate clothing, food, toys, and money donations, as well as volunteers for helping to distribute the baskets. On Thursday, December 15th from 9:00 a.m. until noon, they need volunteers to help organize the baskets for delivery. On Friday, December 16th from 9:00 until noon they need volunteers, preferably with vans or trucks, to help deliver the food. On Monday, Decem-

ber 19th, from 8:00 a.m. until 5:00 p.m., they need people to help set up the "store" of collected goods where needy families may come and shop. If you are interested in donating or volunteering time, contact Marge Stephens at 231-9328. If you're interested in adopting a senior or sponsoring a family for the holiday season, contact Sister Annalee at the Guardian Angels Settlement at 231-3188.

South Side Gateway Center

A Branch of the Human Development Corporation
3626 S. Grand
St. Louis, MO 63118
771-4800



The South Side Gateway Center "will take anything as long as it's in working condition," according to Betty Browning, a counselor there. They offer a donor form for you to fill out, estimating the worth of your donations for tax purposes. Beds/mattresses and linens for beds are especially needed. Betty Browning and Joyce Bowden are the contact people for any donations during the holidays.

South Side Baptist Church

3514 Oregon
St. Louis, MO 63118
771-0157



This organization is in need of blankets, toilet articles, clothing and furniture for refugees from Romania, Laos, and the Philippines. They also give out over a 100 food baskets weekly, so they would appreciate any non-perishable food donations. Georgia Phillips is the contact person and she's available Monday-Friday from 9-3.

Joint Neighborhood Ministries

2911 McNair
St. Louis, MO 63118
771-3987

Barbara Kirchhoff is the contact person for adopting a family for the holidays. They still have a few families in need of adoption.

Hosea House

2635 Gravois
St. Louis, MO 63118
773-9027



Hosea House is also sponsoring an "Adopt-a-Family" program. Lynn Kloecker at 644-6582 is in charge of all holiday donations this year.

St. Pius V Church

3310 S. Grand
St. Louis, MO 63118
772-1525



They are accepting food and cash donations to help prepare Christmas baskets this year. Also, St. Pius is continuing to collect money for the Kathleen Murphy fund. Nancy Adkisson, church secretary, is the contact person.

New Harmony Baptist Church

3502 Grace
St. Louis, MO 63116
773-6650



According to Pastor Rick Lay, New Harmony is currently working with Haitian refugees who have formed their own congregation which meets in the church. They welcome food and clothing donations year round, but they are especially in need of new undergarments for children.

BLOCK CAPTAIN NEWS

By Marilyn Abbott

Support for individual block activities is one of the most important functions of the neighborhood association. The block captains/committees and our monthly meetings are the foundation of this block support. This column is the first of a series in which I plan to summarize the activities of the block captains group.

What happens at block captain meetings? Each meeting is different because of the specific topics covered, but each one provides a forum for the exchange of information and ideas about our neighborhood. Sometimes someone will mention a problem, thinking it is unique to their block, only to find that another block has had that problem and may have suggestions for solving it. The meetings this Fall have covered a range of subjects regarding specific block events and general neighborhood concerns.

In September, the major topics of discussion were nominations for the

Good Neighbor Awards, welcome packets for new neighbors and nuisance properties on some of the blocks. Several people described actions that they have found effective against "un-neighborly" tenants and landlords.

At the October meeting we started off with the good news that crime in the 3rd police district decreased by 26%. With the exception of the 3800 block Wyoming, most block captains reported that their blocks had been fairly quiet for the past few months. Some concerns were voiced over activities on Grand including loud music, male prostitutes and X-rated videos.

Representative Pat Dougherty attended the November meeting and described the new state law that permits individuals to take neighbors who neglect their property to small claims court for loss of property value. The law has not yet been tested in court so it is not completely clear what type of evidence of loss will be

required. However, this law may help in several situations around the neighborhood.

The other main topic at the November meeting was Holiday in the Heights. Several of the block captains volunteered to help with the Luminaria and the party at the church. Plans were made to hold the next meeting on Monday December 5th at the American Legion Hall where we can all work together to assemble and box the Luminaria. Yes, the secret is out! It isn't Santa who brings those beautiful Luminaria - it's your block captains! And if you would like to put some out or pick them up, I'm sure that your help would be appreciated!

Block captain meetings are interesting, informative, fun and open to everyone. We try to meet during the first full week of each month, usually on Wednesday. We normally have 8 to 12 people that attend, but we always have room for more. If you would like to attend a block captain meeting to see for yourself what goes on, call 776-5354 to find out the date and location of the next meeting. See you there!

771-5462

EDDIE KANE

Bringing the Beauty of old Homes Alive Today!

A BUILDING RENOVATION COMPANY

CARPENTRY DRYWALL
KITCHENS BATHS

LEFT BANK BOOKS

Offering a broad selection of distinctive titles in every subject

Quite simply, the best bookstore in St. Louis

Monday 10-6
Tuesday-Saturday 10-10
Sunday 11-5

Since 1969

399 N. EUCLID
ST. LOUIS, MO 63108
314-367-6731

continued from page 2

tapes, records, CDs and concert-tickets! Can you believe it...their medallion Gift Certificates can be recycled!

SoHo and **Faru** (For You, not for-rue) offer unique items to enhance the home and expand the wardrobe! **Futon Expres** has great lamps, tables and accessories.

Farther South on the West side of Grand sits **Beckers**, a fixture in our neighborhood for many years. Beckers offers imported and domestic food gifts, such as chocolates, beers wines and liqueurs. You'll also find mugs, glassware, smokers and nutcrackers, dolls, ceramic figures, German language Christmas cards and music cassettes, and door chimes. It's definitely worth a visit just for the old world atmosphere.

Across Grand from Beckers, you will find the charm of **Grand Books** with a wide selection of books for everyone's taste. A few storefronts to the South, **Piccadilly Antiques** offers wonderful antique pieces that would add turn-of-the-century charm to anyone's home.

Speaking of taste, you'll find something for friends with unusual tastes at **Cheap Trx**, which offers gift items with a more bizarre twist which you won't find anywhere else.

My-Le Jewelry store has a broad selection of bracelets, rings, and brass items for sale, and the **Kim Chi Jewelry** store offers 24, 18, and 14 Karat jewelry pieces. Anchoring the South end of the Grand merchants near Utah is **Chin's Imports**. At Chin's, you'll find a good deal of

martial arts equipment and clothing, but may see some unusual gift items as well, such as fans, lanterns, slippers, kimonos, wall hangings and pictures.

For the health conscious, **New Dawn Natural Foods** at 3145 S. Grand has all kinds of natural foods, books on nutrition and fitness and a large selection of herbal teas.

Star Video at 3143 S. Grand is the place to go for new and used video gifts. Gift certificates in \$5 and \$10 denominations are available and can be used for movie rentals or purchases.

For food gifts with an international flavor, there's **Jay Asian International Foods** at 3182 S. Grand. They carry items from the Far East, Near East, Middle East and Africa, as well as other distant locales.

Dickmann's Blvd. Bakery at 3139 S. Grand carries a great variety of holiday delicacies which would make thoughtful hostess gifts. Yule log cakes, decorated cookies, old fashioned German sprinkle cookies, and ginger bread houses are just a few of the many different items you will find.

For those of you who want to stick with the Middle Eastern foods, stop by **Mid-Eastern Market** at 3201 S. Grand. They have meat pies, cheese and thyme pies, spinach pies, and a delicious assortment of Arabic pastries.

A little to our North, but still along Grand, the rich, invigorating smell of coffee will capture your senses as soon as you open the door of the **Shenandoah Coffee Company**.

They have an almost unbelievable assortment of over forty coffees from

which to choose. You can even get a mug to go with that special coffee. And if tea is more your style, you can make your selection from a wide variety of different herbal blends. Of course, when you buy coffee or tea you have to think about something to brew it in. Shenandoah Coffee carries an excellent array of coffee brewers, and their teapots run from the ordinary to pots that look like chickens, pigs and ducks! Rounding out the possible gift ideas, the shop has unique ceramics that will bring a splash of color to your dinner table and a smile to your guests. You will find this terrific little shop at 2300 S. Grand.

Christmas shopping can really build an appetite so make sure to take advantage of the many wonderful restaurants in the Grand business district. In addition to enjoying their offerings, consider giving gift certificates for area restaurants.

Every year we promise ourselves that we won't wait until the last minute to finish up our holiday shopping, and every year we find ourselves running around on the day before Christmas trying to finish up our gift buying. It's a good thing we have so many great shops so close to Tower Grove Heights! *Happy Shopping!*

MID EASTERN MARKET

3201 S.
Grand Blvd.

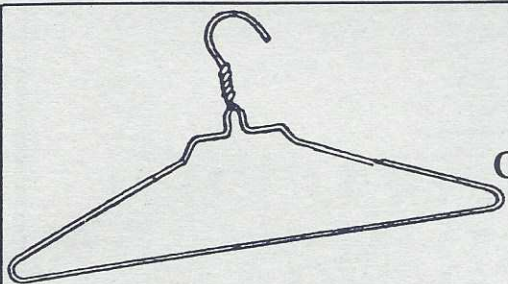


أسواق الشرق الأوسط

**Halal Lamb
Chicken and Beef
Mid Eastern Deli
Pita Breads - Pastries
Imported Cheeses
Olives - Coffee
Tea - Spices**

Open
8:00am - 8:00pm
Daily

314-771-9599



PHONE
772-1155

ORPHEUM CLEANERS

FAST PERSONALIZED SERVICE
CLEANING - REPAIRING

3199 S. GRAND BOULEVARD
AT WYOMING



CHRISTMAS GOODIES



Tower Grove Heights Dessert Recipe Books make great Christmas gifts. The following recipes are just a sample of the many taste tempting recipes that are found in this collection of favorite recipes from your neighbors. Profits benefit the Tower Grove Heights Neighborhood Association. Call 772-5982 to place your order.

HONEYDEW SORBET

WITH STRAWBERRY PUREE

Mary Schroeder - McDonald

- 1/2 medium-sized Honeydew melon, pared and cut in 1 inch chunks
- 2 cups ripe strawberries
- 1 tsp. lemon juice

Separate melon chunks in a flat container, cover and freeze until hard (at least 2 hours).

Place strawberries in food processor bowl. Process with steel blade until smooth. Place about 3 Tbsp. of strawberry puree on each dessert plate.

Wash processor bowl and blade. Put one half of the frozen melon chunks and 1/2 tsp. lemon juice in bowl.

Cover, process until smooth. Repeat procedure with remaining lemon juice and melon chunks. Scoop or spoon

1/2 cup of melon mixture on each plate of strawberry puree. Garnish with strawberries and serve immediately. Serves 4.

Note - If sorbet is to be frozen for longer than 1 hour, remove from freezer 45 minutes before serving.

ELSAH LANDING MYSTERY PECAN PIE

Diane Hurwitz - Arsenal

Filling:

- 1 8 oz. pkg. cream cheese, softened
- 1 egg
- 1/3 cup sugar
- 1 tsp. vanilla
- 1 1/4 cups chopped pecans

Pie:

- 3 eggs

- 1 tsp. vanilla
- 1 cup light corn syrup
- 1/4 cup sugar
- 1/4 tsp. salt
- 1-9" pie shell, unbaked
- Preheat oven to **350**.

Filling:

Cream together cream cheese, egg, sugar and vanilla. Beat until fluffy. Spread mixture on bottom of pie shell. Sprinkle pecans over cheese mixture.

Pie:

Beat eggs until well mixed but not foamy. Do not overbeat. Add corn syrup, sugar, vanilla and salt. Mix well. Pour over pecans and cream cheese mixture.

Bake at **350** for 40 minutes or until nuts are lightly browned. Top will rise like a soufflé and sink as it cools.

Note - For an extra rich variation, sprinkle 1 cup semi-sweet chocolate chips over pecans.

COFFEE TOFFEE CRUNCH PIE

Marilyn Abbott - Hartford

Amaretti Crust:

- 1 1/4 cups ground amaretti or coconut macaroons (1/3 lb. cookies)
- 1/2 square unsweetened chocolate, melted
- 1/3 cup unsalted sweet butter, melted
- 1/2 cup finely chopped macadamia nuts

- 1/3 cup sugar

Pie:

- 1/2 cup unsalted sweet butter, softened
- 2 eggs
- 3/4 cup packed brown sugar
- 2 tsp. instant coffee powder
- 1 oz. unsweetened chocolate, melted, cooled

Whipped Cream Topping:

- 1 1/4 cups whipping cream
- 2 Tbsp. cold strong coffee
- 1 Tbsp. powdered sugar
- 1/4 tsp. vanilla

Crust: Mix together amaretti crumbs, sugar and butter. Stir in chocolate and nuts. Spread over bottom and side of well-buttered 9" pie plate.

Bake at **400** for 5 minutes. Cool.

Pie:

Cream butter and sugar in large mixer bowl until light and fluffy. Add chocolate and coffee powder; beat well. Beat in eggs one at a time, beating 5 minutes after each addition. Spoon into prepared crust.

Refrigerate covered 6 hours or overnight.

Topping:

Whip cream until soft peaks form. Add coffee, sugar and vanilla. Beat until stiff.

Spread topping over pie and sprinkle with additional ground amaretti. Refrigerate until serving.



DICKMANN'S BOULEVARD BAKERY, INC.

3139 So. Grand Blvd.
St. Louis, MO 63118

773-7585

Hours:
Mon. - Sat. 6 - 6
Sun. 8 - 1



I'M MAD AS HELL AND I'M NOT GOING TO TAKE IT ANYMORE!!



by Elizabeth Braznell

It's everywhere you look. The headlines are full of it, and elections are won and lost based on it.

Crime.

All of us are afraid of becoming victims of crime. There are lots of things you can do to avoid being a victim. Most of them are common sense. Keep your porch lights on all night (bad guys hate light--they want to do their dirty work in the dark), don't get out of your car if suspicious persons are near (honk your horn repeatedly to get neighbors to come to their doors), and never let *any* strangers into your home without identification.

There's another kind of victimization that we force on ourselves, and it's even more insidious. Because we are constantly afraid, we retreat inside our homes, don't take evening walks, hesitate to get to know our neighbors,

and let unacceptable street behavior pass unremarked. We become meek. Even though nothing overt has been done to us, we become victims.

Well, folks, I'm pissed off and I'm not taking it any more. I've worked hard to get the money to buy my home, and I've worked hard to make it nice. I like my neighbors and enjoy being able to walk to restaurants and shopping. If I wanted to live behind six-foot privacy fences and not venture out, I'd live in the County. I like it here so much I'm willing to fight for my right to live safely.

I don't tolerate illegally parked junk cars or commercial trucks. I get license numbers and call the police repeatedly until the vehicles are towed or the owners remove them. I call other neighbors and have them call the police, as well. If I see suspicious behavior near my house, I stand on the porch (with the lights on and my telephone in my hand to call 911) and

let the people know I'm watching them. If a tenant's yard gets trashy, I call their landlord and Barb Potts, our Neighborhood Stabilization Officer.

I go to hearings on proposed conditional use permits and testify. I go to housing court and testify when a problem landlord or homeowner has been cited for code violations. If kids' behavior is a problem, I talk to them, to their parents, and, if necessary, to the police.

And I don't tolerate *anything* that looks as if it may be drug or gang related. If there's something going on, I talk to my neighbors and ask them to call the police if they see anything. I've called neighbors at 3 a.m. to ask them to call the police about suspicious activity, because the police respond faster if they get lots of calls.

In short, I've become a bitch.

Our neighborhood can remain safe, but only if we want it to. It's not up to the police to take care of problems they know nothing about. Each of us has to take responsibility to call the police, our alderman, the Neighborhood Stabilization Officer (formerly ConServ Officer), or whomever. We have to take action against criminals *before* they act by keeping our streets well lit, by walking around the neighborhood--criminals don't want to be seen, so they'll go where people aren't out--and by keeping our neighborhood clean, free of trash, junk cars, and commercial vehicles parked overnight. Clean neighborhoods don't attract trashy people.

Yes, there's a risk in confronting people to insist on your rights to enjoyment of your home. But if you won't defend your home, you're already a victim. Instead of griping, do something about it. Join Mobile Patrol. Get a Block Watch unit going. Call a neighbor. Or just turn on your porch light.

To hell with "taking a bite out of crime." If this is a war, let's nuke it.



WE DO MORE THAN GREAT FRIED CHICKEN

PORTER HOUSE	
STEAK DINNER	\$6.75
SHRIMP DINNER	\$6.50
BBQ RIB DINNER	\$6.75
CATFISH DINNER	\$5.40
CHARBROILED CHICKEN	
BREAST PLATE	\$4.05



LUNCH & DINNER 7 DAYS

2100 Gravois • 776-7292

OPEN TILL 10 PM 7 DAYS STOP BY FOR LUNCH OR DINNER!



BULK RATES

10 LB CHICKEN WINGS	\$33.75
50 PC FRIED CHICKEN	\$33.75
100 PC FRIED CHICKEN	\$67.50
SLAW (GALLON)	\$7.50
BAKED BEANS (GAL)	\$9.50
POTATO SALAD (GAL)	\$10.50

"VALUE WORTH CROWING ABOUT!"

2100 Gravois • 776-7292

RESIDENT PROFILE

TOM REEDY

by Victoria Cusumano Miles

Books & Co. Bookstore and Collectibles, established in 1991 by current owners Elaine Murray and Tom Reedy, recently relocated from Alton, Illinois to 3196 South Grand.

Co-owners Murray and Reedy, long-time friends and residents of Alton, are avid readers with broad interests in nearly every category of the written word available in their bookshop that also displays unusual and handcrafted collectibles such as ethnic jewelry, textiles, pottery, western and Native Americana in a comfortable, home-like atmosphere. Their slogan: *The Bookstore That Looks & Feels Like Home!*

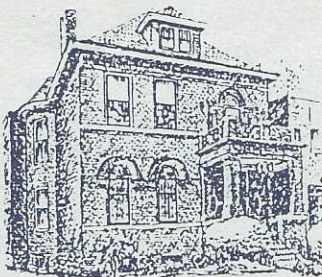
Elaine, a full-time librarian and media-specialist at Wedgwood Elementary School in Florissant, is the principal creative director. Tom, a former technical writer/editor and computer training consultant, is the business manager and daily operator of the shop. Both share in the excitement of procuring unusual items to sell or to use solely for display. While "not-for-sale" display items occasionally cause a customer to be disappointed (e.g. the large oak library card file used to display jewelry) it's precisely these items that contribute to the charm and inviting ambiance of the shop overall.

Why Grand South Grand? Elaine and Tom say when they were still in Alton, most of their customers were coming from Missouri - they realized crossing over to "the other side" of the Mississippi would insure the growth of their business. Tom was more familiar with the area from more than 20 years of commuting in his former career. When the 3196 South Grand location became available, they wasted little time in negotiating with the property owner and the South Grand Business Association. They felt the Grand South Grand was a perfect fit for them and for the neighborhood community. The multi-cultural diversity, residential charm, nearby academic centers, the city's first large reserve, Tower Grove Park and Missouri Botanical Garden, the country's oldest, most beautiful botanical garden made the "crossing" a journey of love and hope of fulfilled expectations for many years to come.

The move itself was, for Elaine, fulfilling ... "a life-long ambition to have my own bookstore; the bookshop is a dream come true and I really look forward to when I'm no longer teaching and can spend more time at the store"; and for Tom, ... "Having worked for a decade on Morganford near Utah in the

70's, I feel like I've come back home. The South Side really is the heart and soul of St. Louis - and soon my vision will be complete when I move into the apartment above the shop and begin focusing on my pottery and sculpture once again." Tom holds a masters degree in fine arts from SIUE and says teaching pottery to neighborhood residents may be a possibility in the future.

Elaine, an arts and library media graduate at SIUE, is an accomplished designer/decorator who makes several jewelry items in the shop from a variety of ethnic beads and has a tremendous sense of fashion. *cont. on page 14*



THE WINTER HOUSE BED AND BREAKFAST

Hosts: Sara & Kendall Winter

Give Your Out-of-Town Guests a Home
Away from Home

3522 Arsenal Street
Saint Louis, Missouri 63118

(314) 664-4399

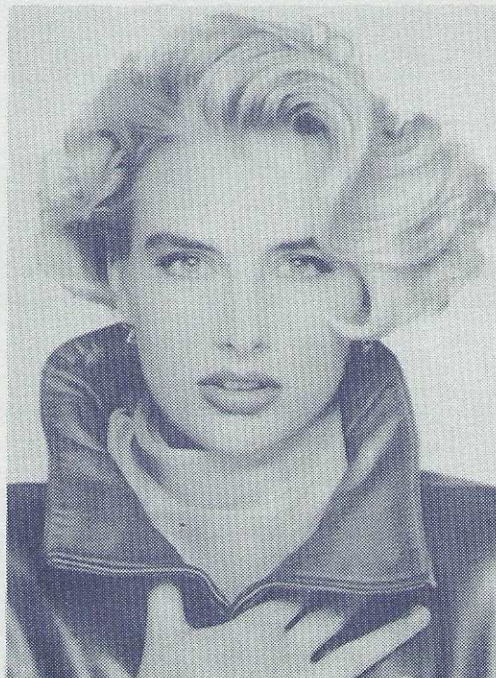


FARMERS
INSURANCE
GROUP OF
COMPANIES

Tom Coriell
Insurance Agency

5013 Hampton Avenue
St. Louis, Missouri 63109
Bus. (314) 352-2504
Res. (314) 773-9005

Auto • Fire • Life • Farm • Commercial



GET SOME
body
TO LOVE

TRUST
Permanent Body System

Any body you can imagine.
From serpentine-soft waves to curliest cues.
Always seductively silken and shiny.
Minus post perm odor!
Body the way it should be.



2233 S. GRAND

ST. LOUIS, MO 63104

314-771-9001

FROM THE PRESIDENT

by Jean Iezzi

So, how's the neighborhood? Isn't that the first thing anyone asks when thinking about buying or renting in Tower Grove Heights? I recently received a call from someone who just purchased a house in our neighborhood. It was an interesting call because she gave the same reasons for buying as we did 16 years ago: good people, great houses, Tower Grove Park, South Grand, a neighborhood feeling and an active neighborhood association.

It's funny how we get caught up in the downside of things. Too often the things that need attention are the problems - not only in our neighborhood but in any neighborhood. It's refreshing to get a call reinforcing the amenities we too often take for granted or forget.

I think the goal of our Association should be, among other things, to ensure that prospective buyers and tenants as well as residents realize the advantages of living in Tower Grove Heights. One of the most effective selling techniques has always

been to encourage prospective residents to compare Tower Grove Heights with other areas and neighborhoods. When they begin to shop around they return to live in Tower Grove Heights.

Sometimes we look at our neighborhood in a vacuum and see problems here and think other places have none. I told a long time resident how pleased I was with the progress on Grand Avenue but she said, "It's not like it was in the '50's." I replied "nothing is". Why is it so easy to equate change with bad?

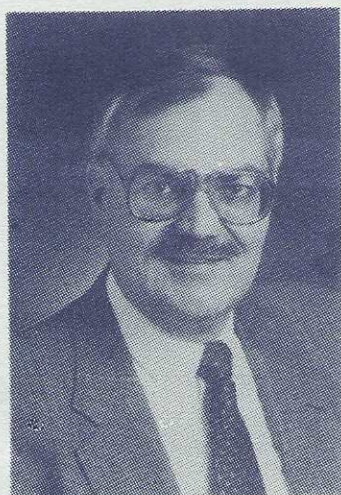
Look at the positive changes we've had. Five years ago South Grand was a shell of what it is today. Now we crab about not having enough parking... parking!!! Three years ago the building on Spring between Hartford and Juniata was everyone's nightmare. Now it is one of our nicest buildings with three happy owners. Who would have ever thought? The same changes have occurred right under our noses in Tower Grove Park. It didn't even have street lights when we moved in. There were no flower beds or lily ponds to admire. Now it's

safe, spotless, spectacular.

Tower Grove Heights is a mix of houses and apartments. It appears the founders wanted it that way, creating streets with flats right next to homes. We enjoy an incredible rental market opportunity and I think we should be marketing this aspect of our neighborhood to attract quality tenants. In Tower Grove Heights, tenants enjoy the same amenities as homeowners. Many tenants graduate to become owners while remaining in the neighborhood. We've recently attracted buyers and renters from West County who told us there is more to life than sitting in traffic and they have experienced crime in the "safe" suburbs. Listen to the morning traffic report and you'll realize why Tower Grove Heights can be a great alternative for anyone who is seeking an escape from bumper to bumper traffic night and day and on weekends!

Anyone who has been around awhile will see that the Association has not forgotten its roots. It was founded 7 years ago to promote the neighborhood and maintain and improve what we now enjoy. I welcome everyone to enjoy our neighborhood and start to live ... in Tower Grove Heights.

Selling Homes... Building Neighborhoods



Wayne Failoni

When thinking of buying, selling, renting or investing, call Failoni Consultants, the real estate professionals.

Providing complete real estate and property management services.

Failoni
Consultants, R.E.

2242 Thurman Avenue,
St. Louis, Missouri 63110



772-8407

FAIRUI

Fetishes • Kachinas • Pottery
Storytellers • Tapestry • Masks
Jewelry • Bola Ties • Belts
Scarves • Shawls • Sweaters
Handbags • Backpacks
Crystals & More

11 am-6 pm • MON-FRI
10 am-6 pm • SAT

3111 So. GRAND BLVD. • 314-773-7733

TOWER GROVE HEIGHTS

NEIGHBORHOOD ASSOCIATION

President: Jean Iezzi
President Elect: Joe Thele
Secretary: Diane Hurwitz
Asst. Secretary: Donna Mayes
Treasurer: Don Detsch
Past President: Margie Meyer
COMMITTEE CHAIRS
Block Captains: Marilyn Abbott
Fundraising:
Neighborhood Imp:
Promo. & Marketing:
Publications: Don Hardin

BLOCK CAPTAINS

3600/3700 Arsenal

Diane Hurwitz (3640)

3800 Arsenal

Elliott Blevins (3850)

Fredric Rissover (3850)

3600/3700 Hartford

Marilyn Abbott (3648)

Carol Hoffmeister (3656)

3800 Hartford

Donna Mayes (3825)

Bill Wright (3836)

Tom Booth (3807)

3600/3700 Juniata

Sara Langan (3639)

Connie Bender (3665)

Tina Gunter (3705)

3800 Juniata

Shauna Feely (3871)

Tod Flak (3850A)

3600/3700 Connecticut

Chris & Rich Jamison (3625)

Micky Schultz (3618)

3800 Connecticut

Margie Meyer (3860A)

3600/3700 Wyoming

Paddy McPhillips (3668)

Diane McCullough

Janet Goltiko

3800 Wyoming

Linda & Peter Fick (3879)

C. J. Pleitner

Marcus Holman

3600/3700 Humphrey

Stafford Gavin (3651)

3800 Humphrey

LeAnne Lis (3800)

Pam Hendry (3856)

3600/3700 Utah Place

Judy Newman (3729)

Michele Kerr (3636)

3800 Utah Place

Susie Gudermuth (3834)

Veda Lynn (3855)

Carols in the Garden Tower Grove House Candlelight Tours

By Victoria Cusumano Miles

This holiday season Missouri Botanical Garden expands their traditional "Carols in the Garden: A Winter Night's Celebration" to **two** evenings, Tuesday, December 6 and Wednesday, December 7 from 5:00 to 9:00 p.m. The event features candlelight tours of Tower Grove House, historic home of the Garden's founder, Henry Shaw, from 4:30 to 7:30 p.m. Roam through the beautiful Garden along candlelit paths leading to a Victorian Christmas at Tower Grove House where Henry Shaw will greet visitors at the door as they begin their tour. Built as a country residence Tower Grove House, designed by George I. Barnett, was completed in 1849 and is furnished with authentic Victorian antiques, many of them owned by Shaw. During Christmas the House is lighted with candles and warmed with holiday cheer.

Carolers will perform indoors and out as night casts the magical spell of Christmas over all. Raggedy Ann and Raggedy Andy will be on hand to escort young visitors to the Garden's Spink Pavilion where Santa Claus greets everyone with goodies and treats! Storytellers add their special touch to enchanting tales and the Kemper Center for Home Gardening will unveil its all-natural Christmas tree.

Featured performers scheduled to appear include the popular *acappella* vocal octet Pieces of 8, the holiday-filled sound of the encore Brass Quintet, the Statesmen Singers choral

group and the amazing Boehmer Family Jugglers.

Tickets for "Carols in the Garden" are \$6.00 for adults, \$4.00 for Garden members and seniors and \$2.50 for children ages 4-12. An additional ticket is required for the Tower Grove House Tour, and is \$9.00; please note that house tour tickets are limited! Admission is by paid reservation or advance ticket purchase. Tickets are available at the Ridgway Center Ticket Counter at the Garden or call for reservations (314) 577-5125.

Consider gifts of membership to the Garden for this holiday season and other special occasions! At his death in 1889, Henry Shaw left the Garden in trust to a group of St. Louis citizens and their successors to maintain "for all time" for the public benefit. Today the Garden is a Missouri charitable trust operated by a board of Trustees pursuant Shaw's will.

A year's membership to the Garden is just \$45; \$40 for seniors age 65+. The Missouri Botanical Garden benefits all of St. Louis with year 'round events like **this** one to celebrate the holidays! Other events include the free classic-concert series with KFUE-Classic 99 Live broadcast performances every Sunday from mid-October to mid-December; the Best of Missouri Market in October; the annual Japanese Festival over Labor Day weekend; Jazz in June concert series and Kids In Bloom during the summer months and Storytelling festivals in the spring.

A gift of membership to the Garden is sure to please - one size fits all, you can use it all year long and it goes with everything!

continued from page 12

Tom, who's knowledge is quite diverse, has a great rapport with his new customers and neighbors. Elaine's in the shop on Sundays and Tom's there every Monday through Saturday. Books & Co Bookstore and Collectibles is open 7 days a week: Sundays from Noon til 5 p.m., Monday through Thursday, Noon til 8 p.m., Friday and Saturday from 10 til 10. The shop is closed only for major holidays and occasional purchasing expeditions. Come in a warm yourself with complimentary hot tea, sugar-free candy and good conversation. Tom's advice on book collecting and simple book repair is invaluable; while you're there look over the local literary calendars for scheduled monthly events.

Books & Co's mission statement is: To provide personal services and resources for community enrichment, enlightenment and unity as an active partner in the Grand South Grand business district and neighborhood associations.

Tower Grove Heights Gazette
3203 South Grand Blvd., Suite 103
St. Louis, Missouri 63118

Printed on Recycled Paper