

Tower Grove Heights Gazette

Grand to Gustine Arsenal to Utah Place

Volume 8, Number 2



October 1, 1996

HALLOWEEN INTERNATIONAL

by Donna Branca



The following article was inspired by my first Halloween in Tower Grove Heights. I was enchanted by the creativeness of parents and children alike in the donning of costumes and the magnitude of trick-or-treating that prevailed. For that reason, I researched Halloween from a global perspective.

Acknowledgments belong to CHILDCRAFT, The How and Why Library, Holidays and Customs, VOL. 5., JOEY the JACK -O-LANTERN, Janet Craig, HALLOWEEN NIGHT, Dandi, GEORGIE, Robert Bright, GHOST OF THE FOREST, Stan and Jan Berenstain, EEK! STORIES THAT MAKE YOU SHRIEK, Jane O'Connor.

In the United States, on Halloween, we put on a scary mask so that no one can tell who we are.

We dress up to look like a witch, a black cat, a goblin, a skeleton, or a ghost-and all because years ago people thought that ghosts roamed the earth at night on Halloween, the 31st of October.

Austrians, however, wear scary masks at carnival time, just before Ash Wednesday. You and your friends would run around beating drums, dancing, ringing bells, and making as much noise as you can. The belief is that scary animals and witches will scare away the winter.

When we make a jack-o-lantern for Halloween, we carve a funny face or a scary face on a pumpkin and put

a candle inside it. Did you ever wonder why you make jack-o-lanterns? People of Ireland say that it is because of a man named Jack, who lived long ago. Jack was so stingy that he couldn't get into heaven. There just wasn't any place he could go. So, he had to walk around the earth and carry a lantern everywhere he went. People called him "Jack of the lantern," or "Jack O'Lantern."

Today we call our Halloween pumpkin a jack-o-lantern.

Trick or Treat! Trick or Treat! This is what we say on Halloween in the United States. We wear costumes and go from house to house asking for treats. The treats may be candy, fruit, toys, or money. When someone gives you a treat, you promise not to play a trick. In Belgium, Holy Innocents Day means fun, sweets, toys, and money for children. "Sugar aunts" and "Sugar uncles" give special gifts to children. Lenten Birches, branches with colored paper tied to them signify it is time for hot cross buns in Denmark.

Children in England go from house to house at singing a song to get some eggs.

According to JOEY THE JACK-O-LANTERN, it is okay to be spooky and scary on Halloween, as long as you are really happy inside. HALLOWEEN NIGHT believes it is a special night for kids, both big and small, put on costumes. "They can dress as anything at all." Children fill their bags with lots of candy, more

than they can eat. But, EEK!STORIES TO MAKE YOU SHRIEK, tells of the consequences of bobbing for too many apples, and eating all your candy on Halloween night. "Danny was sick in bed all night and couldn't go to school the next day." "GEORGIE," feeling unloved and unattended to seeks a new family only to find out how cold and uncomfortable it is away from home. Once he recognizes his Halloween fears, he "ran right home, lickety-split." The GHOST OF THE FOREST reminds us all that "There are no such things; there never have been. But just as sure as night follows day-it's fun to be scared of them for just Halloween day."

People use masks to celebrate holidays, and some cultures even use masks to chase evil spirits away. If you wear a mask, you can look like a snarling tiger, a ferocious demon, a snorting dragon, or a funny clown. If you wear a mask, you can make people frightened or happy, and make them wonder who you really are. And if you don't tell anyone who you are, they may never know. To find out, they would have to peek under your mask. WHO ARE YOU? WHO AM I?

To find out, be sure to participate in Halloween in Tower Grove Heights.

One last word of preparation: Be sure to have plenty of "treats" on hand. Last year, I underestimated the TGH trick-or-treaters; thanks to my landlords, the Estradas, who were experienced, I was supported with reinforcements.

The Tower Grove Heights Gazette

Founding Editor: Janice Nesser
Publications Chairperson - Editor: Don Hardin

Graphic Artists: Michele Kerr, Janice Nesser

Database Manager: Tom Booth

Business Manager: Marilyn Abbott

Circulation Coordinator:

Layout design: Donna Mayes

Typesetting: Don Hardin,

Staff: Marilyn Abbott, Donna Branca, Tom Booth, Elizabeth Braznell, Benjamin Chu, Richard Clinebell, Matthew Fernandes, Stephanie Gavin, Don Hardin, Jodie Heliker, Tricia Heliker, Rich Iezzi, Donna Mayes, Terry Mayes, Janice Nesser, Erin O'Reilly, Fredrick Rissover, Jay Rosloff, Jenny Young

The Gazette is a non-profit publication that is published bi-monthly by the Tower Grove Heights Neighborhood Association. For information concerning advertising call Don Hardin at 772.9151. Your letters and comments are always welcome at the Gazette. Mail them to: The Gazette/TGHNA 3203 S. Grand Blvd., Suite 103, St. Louis, MO 63118

GRAND THEATER STREET FESTIVAL

by Don Hardin

Grand South Grand's Global Village hosts is 3rd GRAND THEATER STREET FESTIVAL on Saturday October 5th, from 3 p.m. to 11 p.m.

Produce by Guadalupe Sounds, GRAND THEATER will once again excite the imagination with a tour through St. Louis' most internationally diverse shopping and dining district where street theater, comedy, magic, dance, celebration, and art delight the senses with the ordinary, the extraordinary, mystery, intrigue, and romance.

GRAND THEATER comes alive with Samba music by JOIA, John Goddard's dulcimer, barn dancing by the Childgrove Country Dancer, Dan Ross's guitar and accordion, pyrotechnics by Feral, art and drumming by Crescent Moon, the Kincaid Children's Puppet Show for Children, the Underground Puppet Theater for adult, a vintage and exotic auto contest with prizes of dinners for two (coming in costume increases your winning chances), and exotic masque making for the bold.

Other participants include the Rainbow Repertory Street Theater, the St. Louis Shakespeare company, and a music stage sponsored by the Point (KPNT-FM).

Meet artists and their work at many location, enjoy "aura fluffing" and face painting with Jeannie Breeze and friends at The Vintage Haberdashery, grab a chair for word intrigue and performance poetry hosted by Salamander Magazine at The Gothic Coffee House, see live art by painter extraordinaire Wayne St. Wayne at Mangia Italiano, and more attraction inside and outside other shops and restaurants - some locations open later than 11 p.m.

Dress your wildest and become a part of Grand South Grand's world of GRAND THEATER. For more information, please call Maria at 314.664.7556.

Upcoming Events

October and November

Mrs. Margaret W. Harmon Exhibit - through Nov. 14

Photographs from her book Our Wildflowers and Trees

"Best of Missouri Market - Oct. 12 - 13

Features country stands filled with fruit, vegetables, flowers, plants, herbs, nuts, candies, meats,

mushrooms and baked goods from



Missouri food producers and farmers, craft makers, country and bluegrass groups. Admission fee.

Gateway Gesnerad Society Show - Oct. 12 - 13

The Gateway West Gesnerad Society displays the popular "African Violet" plant family.

Showing of "Private Life of Plants" Video by Sir David Attenborough - Oct. 23, 30 and Nov. 13

The showing includes two segments of the series. The first begins at 11:00 a.m. with a noon lunch break. The second segment begins at 1:00 p.m. Visitors are welcome to attend one or both segments each week. The Garden Gate Shop will be open with the Attenborough video series and book

available. There will also be special tours of the Garden's library and herbarium on this date in the Lehmann Building at 10:00 a.m. and 2:30 p.m. Both video series and tour are free.

Cancer Awareness Day - Oct. 30 - 9:00 a.m. - Noon

Cosponsored by the Garden and the National Cancer Screening Trial and the American Cancer Society.

Holiday Exhibit - Nov. 25 - Jan. 3, 1997

Floral artists from the community collaborate on fabulous wreaths, trees, and other traditional holiday decor to create a holiday exhibit you won't want to miss.



Missouri Botanical Garden
4344 Shaw Blvd. (314) 577-9400

by Rich Iezzi

THE PARK

When was the last time you've seen Tower Grove Park? Not just driven through it but really looked at it? According to John Karel, park director, now is a good time to take a peek.

The half cent sales tax for capital renovations has enabled major improvements to be accomplished on some of your favorite sights. Look at this list of projects that have taken place right under our noses:

1. The south gate was restored near Spring and Arsenal featuring an original looking white chat walk. 2. Tree plantings and repaved walking paths are visible along Arsenal.

3. The bandstand area was totally redone along with the walking paths to it's south.

4. Reforestation of the park is underway featuring some of the original trees requested by Henry Shaw.

5. All streets west of Tower Grove Avenue were repaved including the west entrance.

6. The gate at Grand and Arsenal has been restored.

7. The east gate directly across from Messiah church near Grand and Pestalozzi has been restored including the repainting of the lions and griffins to their original colors. The finials that had fallen off the fence over the years were thoughtfully stashed away by the park crew making the restoration easier.

8. The two small matching pavilions north and south of the cypress circle were redone with a \$10,000 grant from the Whitacre foundation.

9. The Grand/Magnolia gate will be restored using funds from the newly formed Tower Grove Business District located on Grand north of Arsenal.

10. The Sons of Rest pavillion near the Stupp center has been incredibly reborn and is ablaze in it's original colors. An iron crest piece seen from early photos will be added

to complete it's originality.

The largest single project remains the Palm House restoration. The roof and exterior have been completed and now the pavement facing the building has been replaced with a beautiful English slate looking design. Although much work remains to be done, John Karel looks forward to using the unique interior space of the Palm House for supplementing the Stupp Center for gatherings.

While the half cent sales tax helps with the basic restoration needs, the finish work that makes these projects extraordinary still comes from philanthropic endeavors such as the Friends of Tower Grove Park. The approach to any work being done in the Park is the same as it was 125 years ago: quality first. The roll of Tower Grove Parks has also never changed---it remains a priceless, silent neighbor that adds value and tradition to all it's surrounding neighborhoods.



CONDITION AND COLOR, TOGETHER AT LAST!

SHADES EQ™ Conditioning Color Gloss

It's the haircolor that thinks it's a conditioner. Brilliant, super natural color provides shimmering, conditioned shine in a palette of fabulous shades. Ask us about the Shades EQ Conditioning Color Gloss that's right for you.

- Professional Hair Care
- Manicures • Pedicures
- Body Waxing & Makeup
- Skin Care & Facial Services

DAVID'S DESIGN SALON

2223 S. Grand Blvd.
St. Louis, MO 63104
314-771-9001

REDKEN
5TH AVENUE NYC

(continued from page 10)

primaries are the elections where we fill the office. Many times they have no opposition in the general elections.

What can be done? Several things. Be informed, research the candidates, read the newspapers, watch for public forums, talk with your neighbors. If you are a registered voter, get out and vote, even in the primary elections. Tell your neighbors to register to vote, they can register at the library, or at any public school, or call the election board and they will mail you an application.

Yes, your vote does count! It is important! This is where you can voice your opinion and really make it count! National and state elections effect you as they trickle down, the results of City elections impact your life immediately, don't take any election lightly. You have the right and the duty

to decide who makes the rules in your government, take that right and duty responsibly! Vote -informed!

On to other business:

Gentle reminders - Bulk pickup begins on the third Monday of each month. Please don't put your items out until the Sunday before the 3rd Monday! The city will cite those in the neighborhood who do not keep their grass cut. High grass is a hazard in our neighborhood. If your neighbors aren't doing their part call 622.4800.

A short drive through the neighborhood reveals lots of messy alleys. Let's all do our part to keep the area behind our homes neat and neighborhood pride high! New dumpsters should be arriving in the near future. Keep your eyes open for our new arrivals! Thanks for doing all that you do to keep our neighborhood clean and safe!



Tower
Grove Heights
Homes

SUSIE GUDERMUTH
3724 UTAH PLACE
ST. LOUIS, MO 63116
(314) 771-7097

Lucas Optometry, Inc.

TODD N. LUCAS, O.D.

Eye Examinations • Contact Lenses • Eye Glasses

3165 South Grand Blvd.
St. Louis, MO 63118

Office Hours By Appointment

(314) 772 - 3737

FARU



INTERNATIONAL FOLK ART

A world mix of the unusual... Jewelry, Beads, Clothing, Ethnic T-shirts, Sarongs, Textiles, Baskets, Wood Carving, Masks, Kachinas, Fetishes, Kokopelli, Storytellers, Bola Ties, Handbags, Ikebana Pots, Pottery, Icons, Santos, Angels, Prayer Wheels, Drums, Music, Menorahs, and MORE

3111 So. Grand Blvd.
St. Louis, MO
314-773-7733
FAX: 314-773-1942

THE REHABBER

"COOL TOOL - FOOL TOOL"

by Jay Rosloff

The award for the "Best Product I've Tried in 1996" goes to The Drywall Vacuum Sander by FibaTape. This is literally the neatest product since the drop cloth. The Sander is a handpiece that attaches to a vacuum cleaner (shop vacuum types are highly recommended) and acts as a sanding block for fiberglass sanding screens. This under-\$20 item lets you sand drywall mud without the usual nightmarish (and potentially lung-scarring) clouds of dust. I know that this news may seem too good to be believed. But clean up from my last project was limited to throwing away my ear plugs (shop vacs are notoriously loud), the strip of mesh screening, and washing my hands!

Of course there are a couple of techniques to make the job easier and the finished product better. First, if you're careful with the mud, there should be much less to sand off than if you apply it like texturizer. If the mud is fairly even, just go directly to the

150 grit finish screen. The fiberglass mesh is a pretty aggressive substance, so you don't have to scrub very hard. In fact, the Sander has an adjustment for the strength of the vacuum, and the suction can be used as an aid to holding it to the wall. Just set the vacuum a little stronger for your ceiling work, and back it off for walls. The mesh of the screen runs in the direction of the tape, so it is easy to wind up with a corduroy effect by just scrubbing back and forth in the same place. A smoother surface will be achieved by rotating the Sander and pushing it along the bias. An extra length of vacuum hose will also make it easier to reach without having to carry and lift the vacuum cleaner.

My award for the "Worst Product Since the IN THE EGG SHELL SCRAMBLER" goes to Swinglines Electric Nailgun. "It jams, it dents, it fails to countersink! It even bends nails and comes fully unequipped with a six inch cord!" Friends, make sure this one is not on your holiday gift list. It is not a substitute for a pneumatic nail gun or brad gun.

The results are also in from my

three year trial of box fans. Yeah, I know, who needs a box fan now that the leaves are falling? Sorry, but if I wait for Spring I'll forget the results. Anyway, Beth and I live in a house with about a two or three ton deficit in cooling capacity, so we've got some fans running non-stop for months on end. Of the four Lakewood brand three speed fans we've purchased, two are thrown away and one is developing a bad rattle. The one Galaxy by Lasko is still running smoothly. On the down side, the Galaxy has the most powerful air flow and is therefore the noisiest, even on its lowest setting. The higher air volume makes this the best choice for an exhaust fan in an unoccupied part of the house. Real window fans, to answer your question, are three times of the cost of box fans, and are usually more difficult to remove quickly should the thunderstorm strike.

So here we go into the Autumn. Caulk your windows, change your furnace filters, make sure your gutters are clean.

See ya on the street.

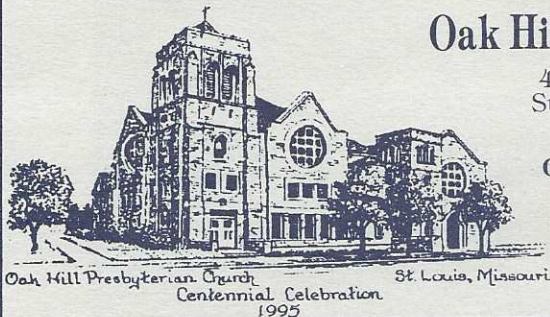
LOOKING FOR A CHURCH HOME?

Oak Hill Presbyterian Church

4111 Connecticut Street
St. Louis, Missouri 63116
664-5525

George Wilcox, pastor
ALL ARE WELCOME!

Sunday School for all ages - 9:15 a.m.
Worship Service - 10:30 a.m.
Childcare provided



Hours:

Mon. - Thurs.

8:00 AM - 9:00 PM

Fri. & Sat.

8:00 AM - 10:30 PM

3559 Arsenal

Near the corner of Grand and Arsenal

St. Louis, Missouri 63118

314.776.2828



CITY SPEECH, INC.

Lori R. Linder, M.A., CCC/SLP - President
Speech - Language Pathologist

Diagnostics
Therapy
Training

By Appointment Only

3825 Utah Place
St. Louis, MO 63116
(314) 773-3060

Pediatric Specialists

NATIONAL NIGHT OUT - "LIGHT UP THE NIGHT"

by Jenny Young

And we did "light up the night" with our screams of excitement and peals of laughter! (Especially the kids when they found the water balloons) Thanks to all for coming out and enjoying the evening under the stars; our block is the BEST!!! I want to personally thank these person for helping make this year's Night Out even better. Thanks to:

Donna Lacourse, for the great hair ornaments.

Shirley Sanders, for the great water guns and assorted goodies (the trolls went first)

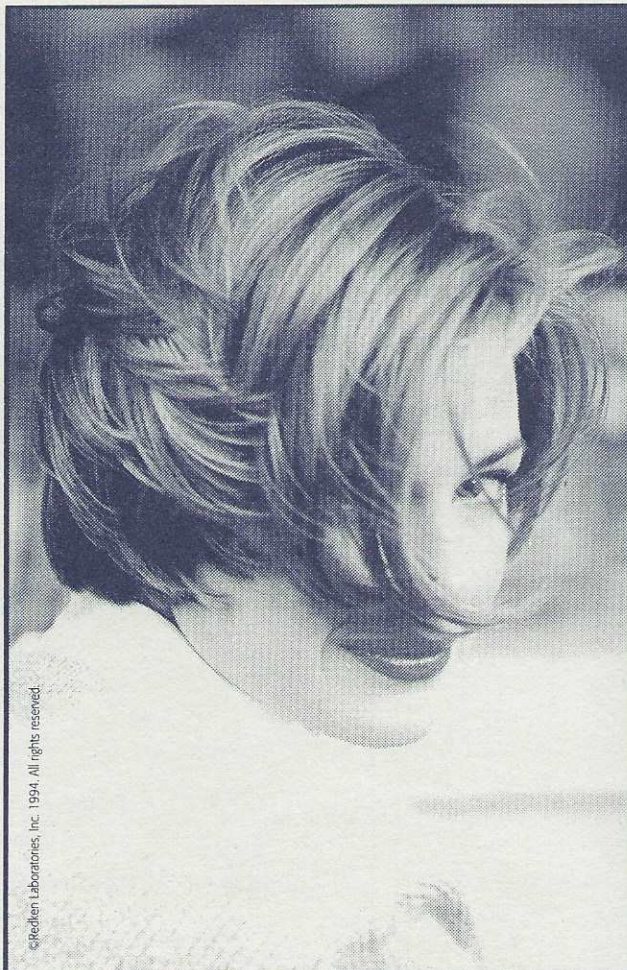
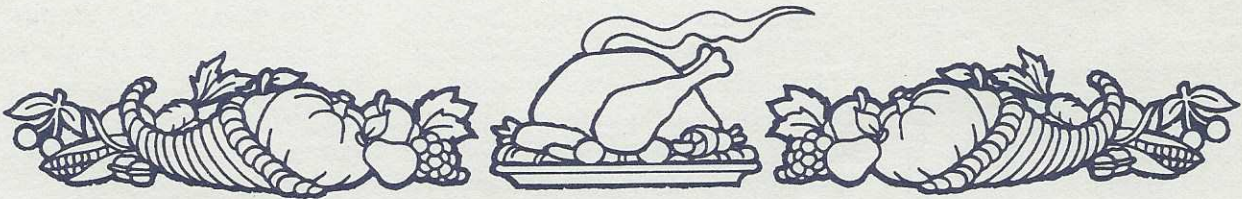
Arsenal Schnucks, for the soda and snacks

McDonald's on Hampton Ave., manager Donna Scruggs, for the delicious orange drink

Gustine Market and deli, for the Charms Sour Pops (sugar gone in a flash)

The Leather Center (manufacturer of fine leather furniture) for the auto sun shades (cool, man)

And mucho gracias to all who rolled out the grills and COOKED! Our evenings' definite highlight was the Water Balloon Toss, a annual favorite; unfortunately it became too dark for the Watermelon Seed Spitting, so everyone mingled and chatted far into the night...till 10pm, to be exact! So, for those who did not participate, YOU MISSED A GOOD TIME!!! Plan on joining in the fun next August and please turn on your porch lights!!! By the way, I have been appointed as "Block Representative," so any news, happenings, and suggestions are welcome - just look me up in the buzz book! Ciao!



©Redken Laboratories, Inc. 1994. All rights reserved.



SUPER FINE HAIR CAN BE SUPER FAT AND FABULOUS

FAT CAT™
Fine Hair Body Booster

Super Fine hair is no mover or shaker! It just hangs around. Give it a boost with Fat Cat, the ultimate builder of volume, beautiful body and shine. Ask for it at:

SHELTON DAVIS SALON
3208 South Grand Avenue, St. Louis 771-4700

REDKEN
5TH AVENUE NYC

THE HEIGHTS BECOMES AN URBAN LABORATORY!!

This Fall, the Department of Urban Specializations at Harris-Stowe State College, in conjunction with the Tower Grove Heights Neighborhood Association, is making the Tower Grove Heights neighborhood into an urban laboratory for a course called "The Urban Agenda".

The purpose of the course is to familiarize Urban Studies and Criminal Justice students with current urban trends and conditions. In order to provide "hands on" experience, the students, in addition to their classroom work, will "study" the Heights to gain mastery in gathering and analyzing a variety of data sources.

The instructor of the course is

Mark Abbott, a long time resident of the Heights and a block representative for the 3600/3700 block of Hartford. Professor Abbott, who is also working on a history of Tower Grove Heights, will work closely with Marge Vining, the alderman of the 15th Ward, and Barb Potts, the Neighborhood Stabilization officer for the area. Neighborhood block representatives and the executive board of TGHNA will also be closely involved with the project.

Ultimately, the goal of the project is to create a composite portrait of the neighborhood that can be used by Tower Grove Heights residents to shape neighborhood strategy and tac-

tics. Dr. Abbott and his students plan to report their findings at the TGHNA general meeting in December or January. If you have ideas or concerns involving the project, please feel free to contact Mark Abbott at 776.5354.



AMERICAN LEGION

POST #186

Come to our Barbecue

3801 Wyoming
St. Louis, Missouri 63116

Saturday, October 5, 1996
12:00 Noon - 6:00 PM

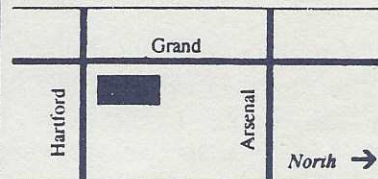


Over 7,000 Movies & Games

Free Popcorn

Free Membership

Free Parking in Rear



3120 S. Grand • 664-2844

SEPTEMBER'S SPECIALS

SAVE 20%

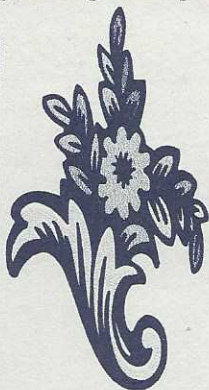
ON

GARDEN FURNITURE

SAVE 10%

ON

ALL OF OUR
ITALIAN TERRA-COTTA
POTS & PLANTERS



3209 South Grand
(314) 865-3244

INTRODUCING!
Victory Scents™!
Potpourries



YOU ASKED FOR IT!

Fresh! Fresh! Fresh!

We are pleased to announce
another new addition to our shop!

The Urban Jungle's
European Flower Market!

Cut flowers by the stem or bouquet!
AFFORDABLY!!

Not to be compared to potpourri of the past. These delightful dandies are substantial, with a big helping of whole vanilla beans, magnolia petals, cones and pods of all shapes and sizes! Not to mention the superb aromas! So come on down and pick up a Mason jar for yourself, and fill your home with the beauty and fragrances of...

Victory Scents™!

by Richard R. Clinebell

Gardens are not merely collections of plants. They also support a diversity of animals, such as bees, butterflies, birds and so on. Butterflies in particular are thought to be a primo index of ecological health -- largely because each species tends to have its own suite of esoteric food plants (which provide the nourishment of the adults) and host plants (which provide the nourishment of the larval caterpillars). Butterfly diversity is thus a function of the plant diversity in a garden.

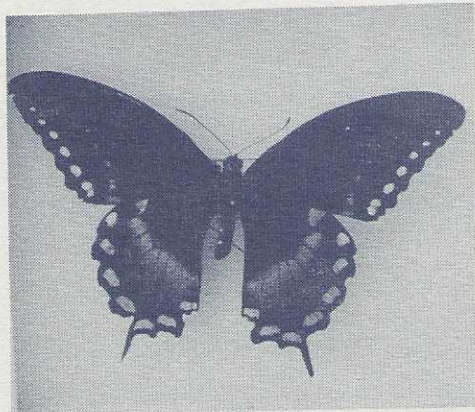
This article describes on of the most spectacular groups of butterflies native to Tower Grove Heights -- the Swallowtail Butterflies, which contain Missouri's largest and second largest butterflies, and the Giant and Tiger Swallowtails.

A Bestiary of Swallowtails

The pivotal species is the **Pipevine Swallowtail**, named for the host plant, which makes both the caterpillars and adults distasteful to predators. While pipevines are not a diverse group here, they are more common in the rainforests of Central and South America. This species is

BUTTERFLY GARDENING

large and black with sheets of shimmering iridescent blue on the hindwings. Because its unpalatability gives it protection, it has been mimicked by three other species of swallowtails, as well as by several other large butterflies, such as the female of the profoundly rare Diana Fritillary. This form of mimicry, where tasty organisms evolve to resemble a distasteful



model, thus tricking predators, is called **Batesian Mimicry**. The other form, where distasteful organisms coevolve to resemble one another is called **Mullerian Mimicry**. Both are

common in the insects of Saint Louis gardens.

The Pipevine Swallowtail is probably not currently present in the neighborhood due to the unavailability of the host plant. However, there are three young pipevines on this block of Hartford Street tendrilling up trellises and fences as a mitigation of this deficiency. I collected the pipevine seeds at Saint Louis University's biological field station along the banks of the Huzzah River, and the young plants are thriving, but are still too small to attract the butterfly.

The first mimic, the **Black Swallowtail**, is abundant in the neighborhood, and its young can only feed on members of the Parsley Family, such as parsley and dill. There is quite a bit of this plant family in the neighborhood. The Black Swallowtail has two rows of yellow spots on the top hindwing, and like all the others, also contains orange spots and splotches of iridescent blue, all on a black background. The second mimic, the **Spicebush Swallowtail**, is abundant on Ozark glades. The specimen shown, photographed by Don Hardin, was collected in Crescent Glade

(continued on page 9)



OPEN TILL 10 PM
7 DAYS
STOP BY FOR
LUNCH OR DINNER!

HODAK'S
Restaurant & Bar

WHERE CHICKEN LOVERS COME TO ROOST!

BULK RATES

10 LB. CHICKEN WINGS	\$37.70
50 PC. FRIED CHICKEN	\$37.70
100 PC. FRIED CHICKEN	\$75.40
SLAW (Gallon)	\$ 8.00
BAKED BEANS (Gal.)	\$10.00
POTATO SALAD (Gal.)	\$11.00

2100 Gravois • 776-7292

BOTANICALS
ON THE PARK



Fine Flowers and Gifts

Monday - Friday

9 - 6

Saturday

9 - 5

3014 South Grand • St. Louis, MO 63118 • (314) 772-7674

(continued from page 8)

of Shaw Arboretum in Franklin County. Its hostplants are the most northern members of the Avocado Family -- Spicebush and Sassafras. The diagnostic character of this female are orange spots on the upper and lower top forewing, separated by five or six yellow spots. The third mimic is the dark form of the female **Tiger Swallowtail**. These are abundant in the neighborhood, and most of them are bright canary yellow with black vertical stripes. The host plant here is a variety of common trees, such as ash, apple and cherry. A fourth species, the **Giant Swallowtail**, relies upon the northernmost members of the Citrus Family as hosts for their larvae, such as hop tree and prickly ash. The Giant is black with horizontal yellow stripes, and reaches 5-1/2 inches across. These can be seen locally along Ozark streams, but I have not yet seen them here.

About the only "do your own thing" swallowtail that doesn't mimic the Pipevine Swallowtail in at least some of its morphs is the **Zebra Swallowtail**. It resembles a miniature Tiger with a background color of yellowish green rather than canary yellow, and very long tails on the

hindwing. The Zebra uses the northernmost member of the Custard Apple Family, the Pawpaw, as hostplant, and is abundant locally wherever pawpaws are available.

Three concluding points follow:

1) Swallowtails with black backgrounds are hard to identify on the wing because they consist largely of a system of mimics.

2) Most of them rely on obscure Missouri plants which are the most northern representatives of tropical groups of plants. This probably reflects a tropical center of origin for the group.

3) Because the host plants are esoteric, many species are absent from the neighborhood solely because the host plants are not here. Fortunately, all of them are of the highest horticultural value, and are appropriate to small urban gardens. Spicebush, Sassafras, Pipevine, Pawpaw and even Hop Tree (which is actually a shrub) are highly attractive to humans as well as to butterflies.

It is rewarding to be given the opportunity to put in this plug for one of the neighborhood's most elegant and beautiful group of both current, former, and hopefully future residents.

GIVE US YOUR OLD, YOUR TIRED, YOUR DISCARDED...

by Matthew Fernandes

At the Tower Grove Heights Neighborhood Association Yard Sale on July 20, the used goods were polished and displayed, the shoppers brought their wallets and the rain stayed away.

Advertisements were taken out in the Post-Dispatch and South Side Journal in an effort to attract visitors. Clouds threatened rain early in the day, but the sunlight prevailed.

"We had an excellent turnout and the big pieces sold really well," said Jody Heliker, organizer of the sale.

A call for donations was made during a neighborhood meeting a few months in advance which spurred neighborhood residents to part with their valuable home items. Eventually a formidable collection of castaways were ready to find new homes. The few items leftover were donated to charity.

\$705 was raised from the sale, held at 3802 Hartford Street. The proceeds will go to fund TGHNA events such as Holiday in the Heights.

The sale will definitely be repeated next year, according to Heliker.

WHAT WOULD YOU CALL A FREE CHECKING ACCOUNT? (WE'D CALL IT SMART.)

Why? Because it's absolutely free.

That's right...absolutely free.

No monthly service charge

No per check charges. No

minimum balance required.

But Smart Checking is a

lot more than that. You get

your first order of checks

free.* You also get full use of

Minimum Deposit

\$25

And

FREE

Checks*

Roosevelt's 24-hour Service Line

and a free ATM card.

All you need is a minimum

deposit of \$25. So make the

smart move.

Go to Roosevelt and open

a Smart Checking Account.

You'll see that Roosevelt really

is the smart place to bank.



Roosevelt Bank

The Smart Place To Bank

3150 South Grand Boulevard

(2 Blocks South of Arsenal)

St. Louis, MO 63118

(314) 776-4220



Insured by FDIC

*Free check offer good on the first one-box order of regular or duplicate style checks

Proud Sponsor of Missouri Tiger Basketball

COOKIES FOR COPS

Cookies for Cops has a new Caretaker, Jenny Young of Hartford.

She will have a "sign-up sheet" at the general meetings. The sheet will contain additional information about this greatly appreciated "neighborhood gift" to our men in blue.

Upcoming Collection Days:

Halloween - October 31st

Thanksgiving - Nov. 28th

Christmas Day - Dec. 25th

New Years Day - Jan 1st

REPORT FROM THE CAPITOL

by Rep. Pat Dougherty

New Legislation Protects Teachers and Students

The Missouri General Assembly has paved the way for a safer environment in schools across the state with a new law that will address violence in schools and assist students who are unable to be taught in a regular classroom setting.

Lack of an integrated system of communications concerning these students is one of the biggest problems hindering effective management of these types of students. The legislation will provide for more open communications between school officials,

juvenile officers, and law enforcement concerning students who commit violent acts. School officials will have to notify the police when a student commits certain felony offenses, such as murder, assault or arson on school property. Juvenile officers will have to inform the school superintendent when a student has been charged with certain felony offenses. School officials can also release information about students accused of these crimes to teachers and staff persons who interact with the students on a professional basis.

Stricter penalties are also outlined for people who commit the crime of assault on school property or at school sponsored events. Any person

who commits this crime will be charged with a class D felony, which carries a sentence of up to five years in prison. The charge can be reduced according to the discretion of the prosecutor.

Those students who are viewed as at-risk of getting in trouble with the law before they actually commit an illegal act will be dealt with through the alternative education programs this bill will establish. Many of these students are unable to be taught in a traditional classroom setting. The alternative education program will provide the students with core curriculum studies, as well as classes in conflict mediation and aggression management. These programs will be set up for children at all grade levels that fall into this category.

Other provisions would outline penalties for assaulting people on school property; offer statewide enforcement of school suspensions; require parents to provide proof of residency in a school district or the appropriate waiver for students trying to enroll in a new school; and permit a student's discipline records to be transferred to his or her new school.

This bill was signed by the governor in June and became law on August 28.



A MESSAGE FROM ALDERMAN MARGE VINING

Did you know...? Are you doing your part...? What can be done? These are questions we've been hearing for some time now, especially in light of the last citywide election. Here are the questions and their answers.

Did you know that in the 15th ward (which is three quarters of Grand Oak Hill) there are only 6,169 registered voters, and of those registered voters, only 2,210 voted in the August primary, and in the 25th ward (which makes up the other quarter of our neighborhood) there are only 6,966 registered voters, and of those, only 2,412 voted in August. For each ward only about 1/3 of the voters got out and fulfilled their civic duty.

Are you doing your part? Primary elections are considered by a large number of the voting public as unimportant. To the contrary! In the City elections more often than not,

(continued on page 11)

BOOKS AND COLLECTIBLES

Used & Out-of-Print Books, Antiques & Collectibles,
Interesting People, and Thoughtful Conversation...
Next to the Post Office at 3196 So. Grand & Wyoming

OPEN DAILY
FREE HOT
TEA / COFFEE

771-3196

DSC, MC, VISA
CARDS
ACCEPTED



Books & CO



Plumbing,
Mouldings, Doors,
Furniture

The Resource
Vintage Home Supply
1-800-475-0191
FAX: (314) 822-TRIM

South County
3818 Lindbergh
St. Louis, MO 63127
(314) 842-1008

Historic St. Charles
400 N. Second St.
St. Charles, MO 63301
(314) 947-9970

Window Hardware,
Bath Accessories,
Columns

Kirkwood
238 Meacham
Kirkwood, MO 63122
(314) 984-0191

REDEEM FOR ONE FREE LESSON *

the Studio

3815 Kosciusko, St. Louis, MO 63118 (314) 664-1966

Wayne Carl Huber, Artist / Educator

* Applies to day and evening lessons in drawing; design; color theory; oil, acrylic, and watercolor painting for adults.

PROJECT IDENTIFY

by Don Hardin

The Third Police District Business Association presents Project Identify - a burglary prevention program. This program encourages individuals and businesses to properly mark property



of value with an identification number, to properly record it, and to place stickers on the back of that property indicating that the property has been marked and recorded. Decals are then placed on windows and/or doors letting possible thieves know that the property within that building has been marked and recorded. For more information about engraving tools and record sheets, call the Third District Public Affairs Officer at 444.0169.

South City DINER

- Diner Classics
- Vegetarian Selections
- Specialty Coffees
- Breakfast, Lunch and Dinner served anytime

Sundays~Noon-2pm
Dave Black Acoustic Guitar

Mondays~7:30-9:30pm
Singer/Songwriter Monica Casey

Wednesdays~8pm
New Moon Rendezvous music reflecting South City's ethnic diversity

Thursdays~8pm
Tom Hall 12-String Steel Guitar

A Diner with a Difference

OPEN AT 7AM MON.-FRI.
OPEN 24 HRS FRI.-SUN.
3141 S. GRAND 772-6100

RESIDENT PROFILE - TIM BARKER

by Erin O'Rielly

Tim Barker is a Tower Grove Heights resident who has an unusual hobby. He and his wife, Anita, and their four children have lived in Tower Grove Heights since 1989. Tim started his own architectural business in 1993 and has worked on several rehab projects in the Tower Grove Heights area and surrounding city neighborhoods. His hobby is Fountain Pen collecting and he started in 1992 when he bought four old fountain pens at a relative's estate sale.

He has always liked and used fountain pens but collecting them has become a passion and now you rarely see him without one of his pens in his front pocket.

He has collected many old and unusual fountain pens dating from the early 1900's to present day models, and he has even designed one of his own -- a sleek looking model -- using computer graphics much like he does in his architectural work. He finds fountain pens especially interesting because of their intricate design and function, their history, and enduring quality of workmanship and materials.

When I went to his house to interview him he supplied me with one of his fancy fountain pens to take notes with. It felt very nice in my hand but, alas, it didn't improve my penmanship! He proceeded to entertain me with fountain pen lore and history and showed me some of his collection. I was fascinated

and came away with some interesting facts about fountain pens which are as follows:

1. Fountain pens are the first pens with their own ink supply and date back to 1884.

2. Methods of filling the ink chamber in fountain pens have evolved from eye dropper filling to self-filling methods including levers, pneumatic, converter, piston, snorkel, vacuumatic capillary fillers and eventually to cartridges.

3. The "nibs" used to be made of gold and the "points" from a very hard and expensive metal, iridium. There are hundreds of different points designed to give a variety of fonts.

4. Fountain pens have been composed of many different materials such as rubber, plastic, sterling silver, gold and even bone.

5. Some of the famous people in fountain pen history are L. E. Waterman, who invented the first practical fountain pen, Parker, Shaeffer, Chilton, Wahl-Eversharp, and Joseph Platte, who designed the arrow clip.

Tim not only studies and collects fountain pens, he also repairs, appraises and brokers them and offers his services to Tower Grove Heights residents. He says that St. Louis is one of the only big cities in the USA that doesn't have a fountain pen association, but that fountain pen collecting is an established hobby across the nation.

FOUNTAIN PENS

BOUGHT
SOLD
RESTORED

TIMOTHY E. BARKER
606 EASTGATE

(314) 725-8440
ST. LOUIS, MO 63130

BARB POTTS ON THE NUISANCE PROPERTY LAW

by Donna Branca

The Southwest City Journal recently published an article on the Nuisance law and its use as another tool for neighbors to target problems. The Journal reports residents may not start using the law to rid themselves of problem neighbors. Information was mailed to neighborhood leaders and alderpersons on just how to use the portion of the new ordinance that allows neighbors to petition the health commissioner to declare a property a nuisance. The property could then be condemned for occupancy of from 30 days to one year. The bill is designed to encourage neighbors to work things

out. Alderman Craig Schmid, states "The key is an active community that won't take no for an answer." Alderman Paul Beckerle praised the law as something that "empowers neighbors to rid themselves of problems."

The Neighborhood Stabilization Team, which helped develop the new ordinance, soon will have a full-time "nuisance properties person" on staff. In the meantime, Joe Thele is handling nuisance property activities.

Nuisances include loitering, repeated peace disturbances, lewd and indecent behavior, excessive noise, use of firearms, street or sidewalk congestion, drinking in public, sale or use of illegal drugs, and harassing or intimidating behavior or violation of state and federal laws.

Barb HIGHLY recommends following the procedures to the letter of the law:

1) Select a designated representative who will obtain valid signatures, work with city agencies and present the completed package to the health commissioner.

2) Obtain the petition package from the NSO Team.

3) Go to the excise commissioner's office to obtain the plat of the petition circle. This is a radius of 300 feet plus half the width of the alleged nuisance property.

4) Obtain the signatures of the majority of property owners or a majority of the registered voters occupying property within the prescribed petition circle.

5) Send the completed petition package to the Health Commissioner. After neighbors complete those activities, the following will happen:

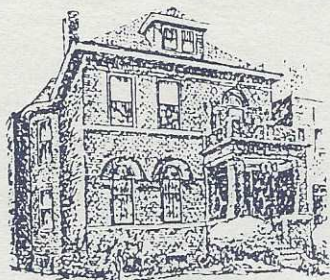
6) The excise commissioner will verify the signatures and return the completed petition to the health commissioner.

7) The health commissioner will set a time for a hearing and will give at least 10 days prior notice by certified mail to the property owner, the residents, and the representative.

8) Neighbors, police, owners, and occupants of the property may give testimony at the hearing.

9) The hearing officer will then make a recommendation.

Barb sees the TGH residents as part of the Problem Solving Team. The responsibility/decision tree includes the residents, the NSO, the Alderperson and the Police. Documentation is key and must begin immediately. The documentation must include times, dates, activities and dates. This procedure gains its strength from the residents. "Residents are the center of the wheel." This procedure empowers residents and educates them on how to support their neighborhood as part of an effort developed by NSOs and Alderpersons.



THE WINTER HOUSE BED AND BREAKFAST

Hosts: Kendall & Sarah Lee Winter

Give Your Out-of-Town Guests a Home
Away from Home

3522 Arsenal Street
Saint Louis, Missouri 63118

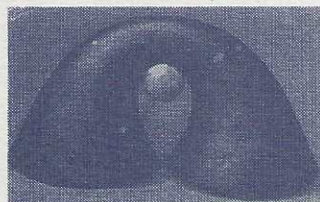
(314) 664-4399

NU PERU

INTERNATIONAL FOLK ART GALLERY
Religious & Contemporary

Coming in October !

Demonstration of the Handwork of
Native Sculpture Ceramic by Visiting Peruvian Artists



October 14-16, 1996
Victor Manuel Juarez

October 17-18, 1996
Richard Chavez Quispe

3210 S. Grand, St. Louis, MO 63118

314-664-4026

by Donna Branca

Yes, Saturday Night Live fans, "Coffee Talk" is alive and well, but not only in New York; it thrives in Tower Grove Heights at Gothic Coffee. Owner John Galvin opened Gothic Coffee one and one-half years ago on South Grand. Originally, John planned to open Gothic in University City, however the building site on Delmar wasn't conducive to his ideal of a coffee house. In January of 1995, John began gutting and rehabbing Becker's Imports. According to John, "the timing was perfect for a coffee house to open in this area." Of the location, John emphatically states, "there's no place like So. Grand." Gothic truly speaks to an exceptionally diverse crowd. In my own coffee moments at Gothic, I have

COFFEE TALK

observed and comforted in the attractiveness of the diversity.

In addition to any number of delicate Latte Specialties, the Gothic Coffee House offers a special mug to its patrons. The mug is on sale at the service counter and presents to the bearer discounts on a variety of coffee drinks. Beginning September 3, Gothic offers a new line of gourmet delicacies which includes sandwiches, pizza, bagels, and quesadillas. Also included are vegetarian dishes, knishes, and Muffaletta, a New Orleans specialty loaf. Hours will be from 10am to midnight weekdays and until one am on weekends.

A St. Louis resident, John orders all his coffee beans from local roasters. He

is proud of his south St. Louis heritage and states "Neighborhoods are important and key to the success of businesses." John encourages business owners to seek out TGH. "Businesses bring business to each other." Personally, John is a certified public school teacher. He spent two years teaching and decided to pursue his entrepreneurial talents. He sometimes wishes he would have developed Gothic a long time ago.

The vision John has for Gothic is similar to the era of art it represents. Gothic era art is typically composed of architecture, sculpture, and mosaic. Gothic exudes the theme of a gathering place. The Byzantine angel St. Michael consuming the left wall left this reporter speechless. Throughout Gothic are paintings from local artists. Gothic art also covers the Beckers windows. Pews from Nativity Church in No. St. Louis provide cozy gathering enclaves. John and his staff are extremely sensitive to customers wanting solitude as well as those seeking a social climate.

A recent Wall Street Journal article addressed the increasing numbers of young adults, statistically between the ages of 10 and 19 sipping coffee regularly. This number rose from 4% in 1990 to 6% in 1996. Why? The WSJ reports a group of beverage analysts studied this trend. Their reports indicated that kids can get as much caffeine from a can of some sports drinks and sodas as they can from coffee.

Also reported in the WSJ is the project of a California high school who has opened a coffee cafe to lure kids back from the streets. The cafe supports study groups and offers early morning tutorial for some students. Many of these students would leave campus to go downtown for coffee and not return to class. The school adds that many of the kids choose cafe lattes that are low in caffeine, perhaps supporting the concept of coffee houses as social places where coffee is served. Moderation is key, the project reports, as statistically it seems the thing to do. Order your iced cappuccino and let's talk.

BRANDENBURG & LOWNSDALE

ATTORNEYS & COUNSELORS at LAW

SUITE 1106

222 SOUTH CENTRAL

ST. LOUIS (CLAYTON), MISSOURI 63105

KURT E. WOLFGRAM

TELEPHONE (314) 721-8899

FACSIMILE (314) 721-0703



OAK HILL TRUE VALUE HARDWARE & PAINT CO.

4100 CONNECTICUT ST. AT OAK HILL
776-0741

HOURS: Monday thru Friday 8 to 5:30
Saturday 8 to 5

**A FULL SERVICE FAMILY OWNED
HARDWARE STORE**

SERVING SOUTH ST. LOUIS FOR OVER 60 YEARS

We Specialize In:

Plumbing, Electrical, Builders
Hardware, Lawn & Garden, Hand &
Power Tools, Locksets, Cleaning
Supplies, Bulk Nails & Fasteners,
Paint and Painting Supplies.
SPECIAL ORDERS WELCOME
MASTER CARD, VISA, &
DISCOVER ACCEPTED

Our Services include:

Key duplicating
Glass & Plastic cutting
Window & Screen Repair and
Fabrication
Pipe Cutting and Threading
Delivery within our area
Window Shade Cutting
Sharpening Service

TOWER GROVE HEIGHTS NEIGHBORHOOD ASSOCIATION

President: Joe Thele
President Elect: Sara Langan
Secretary: Diane Hurwitz
Asst. Secretary: Jodie Heliker
Treasurer: Suzanne Golemb
Past President: Jean Iezzi

COMMITTEE CHAIRS

Block Representative: Marcia Recks

Fun and Fundraising: Jeffrey Blunt
Prom. & Marketing: Susie Guder-muth

Publications: Don Hardin

BLOCK REPRESENTATIVES

3600/3700 Arsenal

Diane Hurwitz (3640)

3800 Arsenal

Elliott Blevins (3850)

Fredric Rissover (3850)

3600/3700 Hartford

Marilyn Abbott (3648)

Ken Johnson

Rocky Keel

3800 Hartford

Bill Wright (3836)

Jenny Young

3600/3700 Juniata

Sara Langan (3639)

Jim Mooney

3800 Juniata

Tod Flak (3850A)

3600/3700 Connecticut

Lisa Jokisch

3800 Connecticut

Curt Gilker

Sherry Taylor

3600/3700 Wyoming

Paddy McPhillips (3668)

Janet Golitko

Brian & Betsy Vanderheyden

3800 Wyoming

Linda & Peter Fick

3600/3700 Humphrey

Stafford Gavin (3651)

Mary Wilsman

3800 Humphrey

Robert Reed

Marcia Recks

3600/3700 Utah Place

Judy Newman (3729)

Michele Kerr (3636)

3800 Utah Place

Susie Guder-muth (3725)

Veda Lynn (3855)

UP CLOSE AND PERSONAL

by Donna Branca

Matthew Fernandes and Sarah Griesbach opened their home to me one hot August afternoon. The purpose: to allow TGH Gazette Readers a glimpse of the substance of a reporter.

As a new Gazette reporter, I have admired Matt's work; his writing is real, yet abstract and enchanting.

The following article unfolds the success of this Gazette reporter.

Originally from the San Francisco Bay Area, Matt met Sarah Griesbach at the University of San Francisco. Both were classmates in a Shakespearean play English class. Sarah was a Political Science and English major and Matt a Media/Broadcast major. His desire for substance led him to change majors to English. Sarah is a native St. Louisan and the two chose to move to St. Louis after graduation. Living first in Soulard, the two planned their marriage in Tower Grove Park. After marriage, they lived their first year on Wyoming. Frequenters of Jay's International, the couple thought the TGH area offered what they needed and wanted. Eclectic and family oriented, they enjoy the ability to walk everywhere, the great night spots and the environment it offers children.

Currently, Matt is employed by the St. Louis Post Dispatch. As part of the Archiving/Research staff, Matt researches and writes music review samples. He accesses the Post Internet system to obtain research for his reviews. This includes attending concerts at times. As part of a staff of 5, Matt currently works in a creative capacity he finds challenging and interesting. His ideal job is to write full time for the Post-Dispatch. Committed to St. Louis, Matt sees this opportunity as an even greater challenge. In his opinion, "research is as enjoyable as writing. A small piece of St. Louis becomes integrated into my learning each time." The son of a

politician, Matt would like to someday comment on politics. His mother is a mayoral candidate in San Jose. Matt "cut his political teeth" campaigning for her while in college as she was running for City Councilwoman.

Matt enjoys the freedom of writing for the Gazette and its connection to the neighborhood. His successes include the Whiz Bam article, the SOHO article, and the article on their house robbery. The robbery article because "I was able to turn something bad into something enjoyable."

Some outstanding goals for Matt are to be published in the Riverfront Times and "wouldn't it be great fun to write a novel." At present, the newspaper medium is preferable to that of magazines. Both Matt and Sarah feel writing has intensified their lives and requires a lot of careful attention.

This same intensity and careful attention is necessary in raising Oscar, now four months old. Matt shares, "I want to make the most of my time away from him, so I can be with him more." He finds fatherhood increases his commitment to his professional life. Sarah's work at the International Education Consortium in Creve Coeur has also been intensified by the arrival of Oscar. Sarah's role with teachers, principals, and educators is challenged by her role as full time mom to Oscar.

Both Matt and Sarah have been working full time on the renovation of their home. Sarah would like to teach again, possibly at the high school level. A goal is to teach in American schools abroad. Motherhood has changed how both look at political life. Sarah states "I've always been aware of my political surroundings; now it's more personal and less abstract. Now I'm aware of how emotional politics is for me." Both feel the Welfare Bill may really impact TGH.

Living in the city is very important to both Matt and Sarah; "TGHNA IS commitment and possibility."

Tower Grove Heights Gazette
 3203 South Grand Blvd., Suite 103
 St. Louis, Missouri 63118