

# Tower Grove Heights Gazette

Volume 11, No. 1

Grand to Gustine

Arsenal to Utah Place

September 1999

## SCHOOLS IN OUR NEIGHBORHOOD...JUST A SHORT WALK FROM HOME

by Ruth Brooks

Living in South St. Louis offers residents easy access to many schools. Five nearby grade schools are within easy walking distance of Tower Grove Heights.

Each of the schools offers a fairly standardized curriculum of courses. However, their many unique programs show that these schools want our children to become responsible, contributing citizens of our community.

Even in mid-July-when kids are free from most of their school work-the schools were offering opportunities to our kids. Messiah Lutheran School/Church sponsored a book fair; St. Pius V Catholic School held an outdoor concert and Vacation Bible School; and Mann Elementary Accelerated School offered a health screening program for neighborhood children.

The 1999-2000 school year begins on August 23 for the private or parochial schools and on September 1 for the public schools. The following paragraphs briefly describe each of our neighborhood schools.

**FANNING MIDDLE SCHOOL**, located at 3417 Grace Avenue teaches pupils in Grades 6-8. (Phone: 772-1038) Fanning also offers a pre-school program (half days) for 3-year-olds and 4-year-olds on Tuesdays and Thursdays for the younger children and on Monday, Wednesday and Friday for the older group. (Tuition is charged for pre-school classes.)

Last Year Fanning's middle school had 475 students enrolled in Grades 6-8. Most of the students live in the Tower Grove South area, and some from Tower Grove East also attend Fanning. Average class size last year was 26-28 pupils per classroom.

Special programs at Fanning include English as a Second Language, Special Education classes, and a Caring

Communities Program. Last year, students were involved in block scheduling of their classes. A gifted resource teacher is on staff to serve academically gifted students. Americorps volunteers were also



FANNING MIDDLE SCHOOL

available to work with the students. The school also has a computer lab with Internet access on all the lab's PCs. Vocal and instrumental music classes are also offered. In addition, an after-school program features one hour devoted to academics; one to a computer or home economics lab; and one hour to recreation. Students may stay after school until 5 p.m.

**FANNING COMMUNITY EDUCATION CENTER** offers numerous adult education programs. A few samplings include foreign languages (including Bosnian and Spanish); ESL classes for adult immigrants; cooking, line dancing and sports programs; crafts and other classes. To register for classes, phone 865-4894.

**HOLY FAMILY CATHOLIC SCHOOL** is at 4130 Wyoming Street. (Phone: 771-2007). Holy Family's pre-school is at 4161 Humphrey. (Phone: 776-2558) [The pre-school has two programs, one for 2 to 3-year-olds and one for 4-year-olds.]

Last year Holy Family had 230 students in Grades K thru 8. Its average class size was 25 pupils per classroom. Tuition and fees this year

total \$2,560 per child, with a reduced rate for families with more than one child enrolled. Also some tuition assistance is available from grants for those families who qualify.

Special programs at Holy Family include computer classes for Grades 3-8, music and physical education programs. Principal Mary Ann Kauffman is extremely pleased with the addition of a learning consultant on staff. She works with classroom teachers to suggest new ways to help students who may not be succeeding in school. After-school programs at Holy Family include Scouting and sports teams as well as a child care program available until 6 p.m.

**MANN ACCELERATED ELEMENTARY SCHOOL** is located at 4047 Juniata Street. (Phone: 772-4545). Last year Mann had 450-470 students enrolled in Grades K-5. Most of Mann's students come from the area bordered roughly by Grand, Gravois, Kingshighway and Arsenal.

Principal Sally Bloom emphasized that Mann is basically a neighborhood school. It is now considered an "accelerated" school because of recent funding to improve instruction. The teachers are receiving special staff development training to help their students.

Average class size last year was 22-25 pupils per classroom. Mann is proud to be part of the Caring Communities Program which allows the students to belong to one of three "villages." The students, teachers and parents of each "village" work together very closely. The program helps parents become more involved with their children's education, Bloom said. Mann is also involved in a school partnership program with Holy Family School which has also been very successful, she added.

continued on page 14



## The Tower Grove Heights Gazette

Founding Editor: Janice Nesser  
Editor: Sara Langan  
Production Managers: Jim  
Rintoul, Ian Wilkinson  
Business Manager: Colleen Santino  
Layout Design: Donna Mayes

Staff: Mark Abbott, Audrey  
Anderson, Donna Branca, Tom  
Booth, Elizabeth Braznell, Ruth  
Brooks, Richard Clinebell,  
Matthew Fernandes, Sarah  
Griesbach, Don Hardin,  
Erin O'Reilly, Jay Rosloff, Joe  
Thele, Cinder Wilkinson

The Gazette is a non-profit  
publication that is published  
bi-monthly by the Tower Grove  
Heights Neighborhood  
Association.

For information concerning  
advertising call Colleen Santino  
at 773-5772.

## TREASURES OF TOWER GROVE PARK

by Don Hardin



Roadways opened into the park with grand entrances made of stone and cast iron. Henry Shaw oversaw the design of the four stately carriage entrances and commissioned some of the finest artisans and craftsmen of the day to execute the ornamental stone and ironwork.

Forty-foot stone tower with sturdy battlements of rough-faced Ashlar or dark gray limestone guard the Kingshighway Boulevard entrance. This entrance, which Shaw called "the West Gate at King's Road," was inspired by the works of J.C. Loudone, noted English author on gardening and architecture.

The North Gate on Magnolia features fifteen foot entrance columns adorned with limestone spheres. Shaw obtained

the columns from the Old Courthouse downtown with it was being remodeled.

Griffins, a mythic cross between a lion and an eagle symbolizing vigilance, and weeping lions, copied from Pope Clement XIII's tomb in St. Peter's Basilica in Rome, top the limestone pilasters of the East Gate – opening onto



Grand Boulevard. These zinc sculptures were crafted in Germany

These gateways were built between the opening of the park and 1872, while Francis Tunica was employed as the park's engineer and architect.

Thought the South Gate was built about the same time, its design is attributed to Barnett. The gate, with its eight pilaster (squared columns) and cast iron trim, opens onto Arsenal Street.

## PARISIAN DINING



3111 SOUTH GRAND

314.771.0195

www.curvestl.com

"CREATE A BETTER PLACE TO LIVE"

**CURVE**  
OF THE  
EARTH  
INTERIORS

## HODAK'S

Restaurant & Bar

WHERE CHICKEN LOVERS COME TO ROOST

10 LB. CHICKEN WINGS.....\$41.70

50 PC. FRIED CHICKEN .....\$41.70

100 PC. FRIED CHICKEN .....\$83.40

SLAW (GALLON) .....\$9.00

BAKED BEANS (GALLON) .....\$11.00

POTATO SALAD (GALLON) .....\$12.00

### BANQUET ROOM

Now Available  
40-100

LUNCH & DINNER 7 DAYS  
2100 Gravois • 776-7292



## MARY JACKSON & BOB BABEL INDUCTED INTO THE GARDEN HALL OF FAME

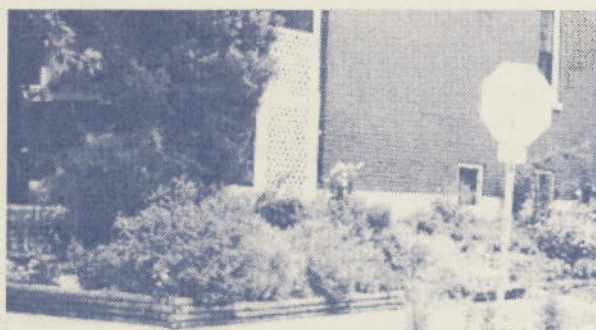
Mary Jackson and Bob Babel at 3734 Hartford were named the first inductees into the Tower Grove Heights Neighborhood Association's Garden Hall of Fame as part of TGHNA's 1999 Garden Awards.



The Hall of Fame was created to honor those residents whose gardens have been outstanding for a number of years. Mary Jackson and Bob Babel's yard was an easy choice. Located at the southeast corner of Hartford and Spring, their corner lot has created awe in passersby for years. With its terraced perennial beds and its lush background, Mary and Bob's

yard has clearly set the standard and has influenced gardeners throughout the Heights. In creating the Hall of Fame, the physical committee intended that there would be future inductees. Every year the committee intends to bestow a "yellow yard sign" to a resident who not only has an outstanding garden that year, but who has made a significant long term contribution to the landscaping of the neighborhood. Thank you for the years hard work, Mary and Bob.

Also of note this year was a four way tie for the 3 Grand Prizes. David and Kathy Kolsterman (3625 Juniata), Dana Winter (3634 Juniata), Dan Hill and Rodney Dillion (3735 Juniata), plus Carol Entwistle and Tim Raw (3879 Hartford) will all receive the green signs that have become a hallmark of the neighborhood. While the committee decided that last year's Grand Prize winners would not be eligible since



the Association has gone to awarding new signs each year, the Physical Improvement committee noted previous winners 3730 Arsenal and 3716 Hartford as having gardens of special merit. The committee also designated 9 other gardens as worthy of honorable mention because of the number of nominations and decided to make this an ongoing category in future years.

Congratulations and thanks to all of those nominated for awards, honorable mentions, our Grand Prize winners, and especially to our new Hall of Fame Inductees, Mary Jackson and Bob Babel. It is because of residents like you that Tower Grove Heights is such a special place.

### News from the Park

Despite several bouts of unusually hot temperatures, visitors enjoyed a delightful summer in Tower Grove Park. Numerous improvements were made throughout the spring in order for the Park to look its best. Most notably, restoration of the Old Carriage, Humboldt North and South, and Turkish pavilions completed in June. The Friends of Tower Grove Park celebrated this successful restoration campaign with a ribbon-cutting ceremony on June 14. An article on the restoration appeared in the Post Dispatch the following day, complimenting Tower Grove Park and its supporters for fulfilling Henry Shaw's vision.

In addition to the pavilions, the various concerts make summers in Tower Grove Park memorable. The Compton Heights "Musical Mondays" produced

Cont on page 11

# Lucas Optometry, Inc

## TODD N. LUCAS, O.D.

Eye Examinations • Contact Lenses • Eye Glasses

3165 South Grand Blvd.  
St. Louis, MO 63118

Participatory Provider for

Blue Choice  
Group Health Plan  
Prudential  
and Many Other Vision & Eye Health Plans

Office Hours By Appointment

(314) 772-3737



## HISTORIAN'S CORNER "WHAT'S IN A NAME?"

### THE STREETS OF THE HEIGHTS

**H**ave you ever wondered what a Juniata is? Is it simply Juanita misspelled? Or is it some mythical creature that is a wife of a Billiken?

If you said either of the above you were wrong. Juniata-like most east-west streets in South St. Louis is named after either a river and/or an Indian tribe. In the case of Juniata, it is named after a river in western Pennsylvania that flows into the Susquehanna and which forms the Wyoming valley. This is also where Wyoming street got its name. Rather than being named after the state of Wyoming, Wyoming street (like the state) was named after the Algonquin phrase for "plain or prairie" (remember prairie des noyer?) that was the name first given to the Pennsylvania Valley. The Wyoming or Pennsylvania Valley was also the site of a famous Revolutionary War battle that was called the Wyoming Valley Massacre that took place on July 3-4, 1778. Another Pennsylvania connection is that before the Heights was subdivided, Arsenal street in this part of the city was named Susquehanna. The only street in the Heights, though, that is named after an Indian tribe is Utah Place. Both Utah and Utah Place were named after the Utes, which were a tribe in what later became the state of Utah. But east of the Heights, Utah had previously been named Wall and Government streets.

Of the east-west streets in the Heights, Arsenal, Wyoming, and Utah were extensions of streets that were already platted before the Connecticut Mutual Life Insurance Company subdivided their new property as Tower Grove Heights subdivision in 1883. With the new sub-division came the new streets of Juniata, Connecticut, and Humphrey. We have already talked about Juniata, but Connecticut and Humphrey both have ties to the life insurance company. Besides Connecticut being named after the company and not the state, Humphrey was named after Humphrey Green, the President of




the Connecticut Mutual Life Insurance Company. What is interesting is that when the land between Gustine and Morganford-the Russell tract-was subdivided in 1894, these Connecticut Mutual streets were extended with their Tower Grove Heights names.

The north-south streets have a much different story. Grand Avenue was designed as an ante bellum version of I-270. Laid out in the late 1850's by Hiram Leffingwell, Grand Boulevard was meant to be a 100+ wide thoroughfare that would

stretch from the river on the north to the river on the south and would outline the periphery of the city. In fact, the city boundaries were 50 feet west of Grand from 1859 to 1874. But even then, Grand was hardly grand. As late as the 1880's, Grand was still mostly a dirt road. The only reason that Grand was no longer the city limits was because of the city/county divorce of 1874 and how the city limits were artificially pushed out another 3 miles.


Spring Avenue was originally known as Cabanne when Tower Grove Heights was still part of the McDonnell tract. However, the Cabanne name was dropped after the life insurance company acquired the land. The street simply became an extension of Spring Avenue which was so named

Cont on page 13



**Kurt E. Wolfgram**  
Attorney at Law

**Personal Injury  
and Commercial Litigation**



4500 West Pine, suite 300      telephone (314)361-2700  
St. Louis, MO 63108      fax (314)361-2052



**OAK HILL TRUE VALUE  
HARDWARE & PAINT CO.**

**4100 CONNECTICUT ST. AT OAK HILL  
776-0741**

**A FULL SERVICE FAMILY OWNED  
HARDWARE STORE SERVING SOUTH ST.  
LOUIS FOR OVER 60 YEARS**

HOURS: Monday thru Friday 8 to 5:30  
Saturday 8 to 5

**10% OFF WINDOW/SCREEN REPAIRS**

**Present This Coupon With Windows or Screens To  
Be Expertly Repaired For A 10% Discount On  
Labor & Materials.**

Expires 10/30/99 (TGHNA)  
Not applicable on any work in progress  
Oak Hill Hardware



## The Right Place at the Right Time

It all came down to a matter of timing. When Ron and Kim were house shopping, the prospects were either just sold, too expensive or just junk. While they were throwing their hands up, their good friend Sharon wondered who would end up buying the house to her west. Once these great minds got together, a deal was struck. Ron and Kim had their rehab project and Sharon and Mike had instant great neighbors.

While Ron Leible and Kim Caldwell lived in Tower Grove Heights for years, they hadn't gotten into rehab but always wanted to 'do a house'. The house they ended up with, 3849 Hartford, needed a transfusion of about everything. The "plan" was put together and work was started in February of 1998.

Kim ended up being the subcontractor on the job because so many questions kept popping up during the project. They both agreed that one of the best parts of rehab is taking a 'vanilla box' and changing it to



what you want. For Ron and Kim, this meant eliminating three load bearing walls to open up the kitchen, master bedroom and front bedroom. This transformed ordinary rooms into spaces large enough to throw a Frisbee.

The original bathroom couldn't have been built any smaller and offered another opportunity. While the master bedroom was being enlarged, it incorporated the bathroom project. A second door was added from the bedroom to permit passage through the bathroom to the upstairs hall. It flows so well that it looks like original construction. I couldn't figure out where they 'borrowed' the space—everything still looks so proportional.

My favorite part of the rehab is the kitchen. The wall between the dining room and kitchen was removed to let the kitchen area claim the whole back of the

first floor. The golden oak hardwood floor was retained in the former dining room and blends nicely with the kitchen flooring. When you look from the living room, the kitchen area looks 30 feet wide. There's lots of room to walk around and keep someone company without getting in the way.

The entire project is a study of the optimum use of space. I can usually spot



new heating ducts going to the second floor but had to ask where they stashed theirs. The first and second floors feature an open floor plan that reveals almost every inch while you stand in one spot. The kitchen is open but still retains plenty of storage.

Ron and Kim blasted through their project and moved in less than four months after the start date. Since their home's completion, several other homes across the street have sprouted new owners and are also under renovation. Ron and Kim aren't quite finished (are we ever?) and plan to landscape and spruce up the garage. When I asked if they would ever do all this again, I could see that any pain had long since passed. "We've talked about doing a two family, maybe even taking on a bigger house."

## Tattler

The South Grand area is getting a lot of good press lately. It made the list in an article titled "Six nights on the town Six in our dreams" featured in the July 25th Arts & Entertainment section of the St. Louis Post-Dispatch. The features a night called "Southern Hospitality" and suggests visiting "one of the cheap ethnic eateries like Pho Grand (Vietnamese), Siete Mares (Nicaraguan) or Mangia Italiano (Italian) and then go to the Upstairs Lounge above the MeKong Restaurant—a great club overshadowed by its downtown hipster rivals—to hear the area's freshest disc jockeys. The mood is mellow the twenty-something crowd doesn't dance, just jams to soul, lounge and crafty pop music. When: Friday and Saturday nights. Why: Because the food and groove rivals that of University City Loop, but you'll never have to wait for a parking space or table". Margie Manning reported in the

July 26-August 1st issue of St. Louis Business Journal that "Tomatillo Mexican Grill is considering opening its sixth location in the area and the first in the city of St. Louis. Restaurant owner Chris LaPocca is scouting sites in the Central West End, South Grand and downtown. And congratulations to Brian Marston, 3875 Connecticut recently elected President of Metropolis.

Architectural thieves are also scouting the area and walking away with decorative woodwork on many porches. The 3600-3700 block of Juniata was hit hard recently. Remember to report ANY suspicious activity to the police. It is a good idea to look at your property with the eyes of a burglar. Do your doors have a simple "flip lock" that opens with a credit card? Can your kids just climb through a window if they are locked out? Do you always come and go at the same time? Try varying your routine. Leave on different lights, come home for lunch, play a radio or the TV. Never leave any packages or bags in your car. WATCH out for your neighbors.

There is an excellent tailor who has set up shop on South Grand, Daniel Morgan. You can find him at 3203A South Grand—in the building on the southwest corner of Grand and Wyoming. We're sorry to see the closing of Star Video.

It has been a landmark through the years changing locations many times along the Grand strip. Also gone is Humphrey's Deli that we featured in a bygone Gazette.



Do you know any Catholic suburban families who would like to move into the St. Pius Parish (which includes Tower Grove Heights). If so, based on their financial need, they could receive up to \$5,000 in loans toward the purchase of a home. If they live in the home for a least five years, they don't have to pay back the money. Contact Fr. Mike Lydon at 772-1525 for additional information.

The Neighborhood Housing Services has chosen 3400-3500 block of Utah for its "Block Aid" program. A blitz is planned for the first Saturday Oct aimed at improving housing facades and exterior clean up. Volunteer help and contributions are welcome.

If you are rehabbing your house, contact the City Health Department before you scrape old paint. They have safety tips on how to avoid lead poisoning. Speaking of rehabbing, Phil Duckwall's house is nearing completion on Arsenal Ave—the site of the old broom factory.



# TGH Mothers Latch On To La Leche League Movement

By Matthew Fernandes

Breast-feeding mothers in Tower Grove Heights have a valuable resource in the Mid-City Group of the St. Louis La Leche League. The league, made up of 23 neighborhood groups in the bi-state area, provides advice and support to mothers who have made the commitment to nurse their babies.

The Mid-City Group meets at Oak Hill Prespeterian Church on Connecticut near Oak Hill Street.

As many as 20 mothers, many of whom are TGH residents, meet once a month to share ideas. The meetings also serve as play groups as mothers let their kids dive into the toys in the church's play room.

"We're very grateful to the church," said Erin O'Reilly, TGH resident and longtime member of the league. "They don't charge us at all and (the facility) is very kid-friendly. It's a perfect arrangement."

O'Reilly and others are heartened as they watch breast-feeding rates rise here and across the country.

According to statistics furnished by the St. Louis Breast-feeding Coalition, 62 percent of St. Louis mothers chose breastfeeding in 1997 (although this number falls to 22 percent in the six months after birth) compared to 52 percent in 1989. Members of the coalition hope that number will jump to 75 percent by next year.

"We need to help women overcome the barriers and make the workplace more supportive" to breast-feeding, said Jill Lund, president of the coalition.

"Our society has gotten away from it. Most of us were raised on formula, and the past few generations have been encouraged not to breast-feed."

Women who nurse got a boost last month when Gov. Mel Carnahan signed a public health bill ensuring a mother's right to breast-feed in public places. Public breast-feeding was already legal, but women were often asked to nurse or pump in bathrooms, despite the law. The bill also requires physicians to inform maternity-ward patients of the benefits of breast-feeding their child.

Barbara Huffmeier, a local Doula (labor coach) and member of the coalition, said she nursed her three children years ago simply because it "felt natural." Now an activist working to make breast-feeding a cultural norm, her cause has been bolstered by a steady diet of studies and statistics indicating the superiority of mother's milk over the cow's for the health of an infant.

"The scientific community has weighed in and, hands down, (breast-feeding) is the way babies should be fed," said Huffmeier, who is president of the St. Louis La Leche League. Some recent studies have found that:

\* Breast milk contains antibodies and immunities not found in cow's milk and soy-based formula.

\* Breast-fed babies have a reduced risk of respiratory and gastrointestinal infections, allergies, childhood obesity and future need for braces.

\* Women who breast-feed reduce their chances of developing breast cancer, osteoporosis and diabetes.

Despite these findings, many mothers still choose bottle over breast for various reasons, including the inability to initiate breastfeeding, the need to return to full-time employment and the unwillingness to grapple with awkward, painful breast pumps.

Debbie Wirtle, a local La Leche League leader, said many mothers prematurely hit the bottle when attempts to get baby to latch on are initially unsuccessful.

She believes that hospitals' longtime practice of doling out cup 'o soup-like formula samples to parents as they take their babies home hinders the breast-feeding process.

"If it's 2 a.m. and the baby won't stop crying ... if mom has a formula sample at home, it's very easy for her to say, 'Well, I'll use just one bottle so the baby stops crying,'" said Wirtle. "Then they lose confidence in their own ability to breast-feed, and before long you have a bottle-fed baby."

"A big problem is that (new mothers) don't stay in the hospital long enough for their milk to come in," said Huffmeier. "They can't get over the hump. Those that do usually have a support system."

"We've separated mom and baby" too soon after birth, said Lund, adding that many new mothers need support and instruction from

health providers who are well-versed in the "10 Steps to Successful Breast-feeding" issued by UNICEF and the World Health Organization as part of their "Baby Friendly Hospitals" initiative.

Breast-feeding is a "learning process between mom and baby," said Lund. "We can't just let (mothers) do it on their own. They need support, just as they do during the birthing process."

Some women have viewed efforts to increase breast-feeding rates guardedly, arguing that women should not be made to feel inadequate if they decide to bottle-feed their babies.

When the American Academy of Pediatrics recommended last year that mothers breast-feed their babies for at least one year, some backlash surfaced.


Lund says guilt-tripping mothers into breastfeeding is not what her coalition is about.

"Our role is to give women the honest facts," said Lund. "We know there are barriers. But we can help women overcome those barriers."

What frustrates breast-feeding advocates most, perhaps, is when mothers choose formula after their caregivers presented it as the nutritious equal to mother's milk. "There still are some (hospital) staff people that are sabotaging breastfeeding efforts of mothers ... there's no excuse for that," said Huffmeier.

For more information about the Mid-City Group of the St. Louis La Leche League, call Erin at 776-6844.


Once Upon A Vine



Once Upon A Vine, is a cozy  
Restaurant & Wine Shop located in the  
Grand South Grand Business District.

Inside you will find:

- Fine wines from all corners of the world
- Regional American cuisine
- Fresh selection of Kaldi coffees and gourmet treats



3559 Arsenal  
St. Louis, Missouri 63118  
314.776.2828

Join us for our  
Fall Wine Tastings

September 9th  
October 14th  
November 11th  
December 9th



# September 1999

## Tower Grove Heights Neighborhood Association Calendar of Events

Sunday	Monday	Tuesday	Wednesday	Thursday	Friday	Saturday
5 Japanese Festival	6 Japanese Festival Last Day of extended hours. <b>Labor Day</b>	7	8 Botanical Garden Free Admission Before Noon Carpenter Library Fall Into Books Preschool Storytime Ages 2-6	9 <b>New Moon</b>	10	11 Botanical Garden Free Admission Before Noon Botanical Garden Gardeners of America Show Rosh Hashanan
12 Botanical Garden Gardeners of America Show	13	14 TGH Block Rep. Meeting 7pm Spring/Conn.	15 Botanical Garden Fall Bulb and Gift Sale Botanical Garden Free Admission Before Noon Carpenter Library Fall Into Books Preschool Storytime Ages 2-6	16 Botanical Garden Fall Bulb and Gift Sale	17 Botanical Garden Fall Bulb and Gift Sale	18 Botanical Garden Fall Bulb and Gift Sale Botanical Garden Free Admission Before Noon Carpenter Library "Back to School" Rally 2-4pm
19 Botanical Garden Fall Bulb and Gift Sale	20 Carpenter Library Book Discussion "Your Blues Aint Like Mine 7pm <b>Yom Kippur</b>	21	22 Botanical Garden Daylily Sale Botanical Garden Free Admission Before Noon Carpenter Library Fall Into Books Preschool Storytime Ages 2-6	23 Carpenter Library "Harvest Moon Festival" Grades 2-5 <b>First Day of Autumn</b>	24	25 Botanical Garden "Classics Go Wildflower" Botanical Garden Free Admission Before Noon Full Moon
26 Botanical Garden "Classics Go Wildflower" Botanical Garden Dahlia Show	27	28 <b>General Meeting 7:15 1st Divine Science Church</b>	29 Botanical Garden Free Admission Before Noon Carpenter Library Fall Into Books Preschool Storytime Ages 2-6	30		

# October 1999

## Tower Grove Heights Neighborhood Association Calendar of Events

Sunday	Monday	Tuesday	Wednesday	Thursday	Friday	Saturday
3 Botanical Garden "Best of Missouri"	4	5	6 Botanical Garden Free Admission Before Noon Carpenter Library Fall Into Books Preschool Storytime Ages 2-5	7 Carpenter Library Learn How to Use the Automated Catalog 7pm	8	9 Botanical Garden Free Admission Before Noon New Moon
10	11 Columbus Day	12 TGH Block Rep. Meeting 7pm Spring/Conn.	13 Botanical Garden Free Admission Before Noon	14 Carpenter Library "Hands are not for Hitting" Grade 1-3 10-11am	15	16 Botanical Garden Free Admission Before Noon
17	18 Carpenter Library Book Discussion "One Flew Over the Cuckoo's Nest" 7pm	19	20 Botanical Garden Free Admission Before Noon	21	22	23 Botanical Garden Free Admission Before Noon. Botanical Garden Lily Bulb Sale Carpenter Library Fall Into Books Preschool Storytime Ages 2-5
24 Botanical Garden Lily Bulb Sale Full Moon	25	26 General Meeting 7:15 1st Divine Science Church	27 Botanical Garden Free Admission Before Noon Carpenter Library Prescho- ol Halloween Party 10am 7pm Ghost Stories Ages 7-12	28	29	30 Botanical Garden Free Admission Before Noon Carpenter Library Hallowe- en Open House 3:30-5:30
31 Halloween						



## Meet Your Neighbor

**S**arah Griesbach, one of our TGH neighborhood residents, was born in Washington, D.C., lived in Boston in her early years and moved to the CWE in St. Louis when she was 5 or 6 years old. She graduated from University City H.S. and at 16 years of age traveled to Haiti, for college credit, with the People to People missionary group. She stayed in an orphanage there for 3 months and experienced the harsh reality of working with very sick and dying children. After she returned from Haiti she enrolled in the University of San Francisco and lived near the famous Haight street close to the homes of Janis Joplin, The Grateful Dead, and Jefferson Airplane and other famous people.

At the U. of S.F. she met her future husband, Matt Fernandes, and they traveled together to Vienna, Austria for Sarah's last year of college at the Institute Fur Europäische Studien to learn the German language and Eastern European Politics. After she completed her coursework there, she and Matt traveled by rail across Europe for 6 weeks until the money ran out.

Sarah's degree is in political science and womens' studies along with several minors. After graduation she and Matt moved back to St. Louis (Matt is from California and was enticed by Sarah and St. Louis) and they lived in the Soulard area. They affianced; i.e. wedded, on 6/25/95 in Tower Grove Park bandstand and moved into the TGH neighborhood in the summer of '96 when they were ready to start their family.

Matt started working at the Post Dispatch utilizing his degree in English and Sarah started an educational course at Wash. U.

She later became certified to teach H.S.social

Cont on page 13

## RECIPE CORNER

Vin and LeAnne Lis live on the corner of Humphrey & Spring in a house surrounded by pink roses punctuated with equally pink flamingos. I thought of Vin for this recipe column because a few years back he provided chili for everyone who worked on the Operation Brightside cleanup of our mutual alley, and the chili was so good! I asked him for the chili recipe, but he quickly declined, saying, "I can't give that recipe out, it's my competition chili." Vin competes every year in the Kidney Foundation's "Great Chili Cookoff" at Westport Plaza. He hasn't won yet, but the judges seem to be intrigued by his use of dried chilies instead of chili powder. They keep coming back for more.

Vin has been the cook in the family since his first date with LeAnne. He had her over for dinner, impressed her with his Beef Wellington, and that was that. He thinks he may have made a mistake not burning the beef, but it's too late

now - he has done all the cooking for over 20 years.

Try the jerk seasoning recipe the next time you get out the grill.

### Jerk Sauce for chicken, beef or pork

1 tsp. pepper  
1 tsp. allspice  
1/4 tsp. nutmet  
1/4 tsp. cinnamon  
1 T thyme  
1 tsp. salt  
1 medium onion (chopped)  
2 cloves garlic  
1/3 Cup red wine vinegar  
1 tsp. Soy sauce  
1 tsp. Worcestershire sauce  
2 T Olive oil  
2 jalapeno peppers (chopped)

Put all ingredients in a food processor or blender and puree. Marinate meat to this schedule.

Beef 1 - 6 hours

Pork 2 - 1 hour

Chicken 2 - 1 hour

Baste meat while barbecuing.

## St. Pius the Fifth Church and Parish School



### Mass Schedule

Saturday - 4:30 pm

Sunday - 7:30 & 10:00 am

### Parish School

Excellent educational opportunities

18-1 student/teacher ratio

Grades K- 8

772-1525 Rectory - 773-8770 School

[www.stpiusv.org](http://www.stpiusv.org) - [stpiusv@msn.com](mailto:stpiusv@msn.com)

3310 S. Grand Blvd., St. Louis, MO 63118



## Tomato Gardening in Containers in Tower Grove Heights

by Rick Clinebell

When I first moved to the neighborhood, seven years ago, the entire backyard was lawn, with a few iris and hollyhocks, and the first year, Don and I grew mostly tomatoes, peppers, midget watermelon and other tasty goodies. We had bunches and shared them with our neighbors. However, given my insane passion for native wildflowers, the tomatoes and other goodies gradually got crowded out in favor of various esoteric elements of the local flora.

The problem was that I did not have the heart to clear areas of natives in favor of delectable vegetables. In a flash of modest insight, amidst Don's grumblings about missing the homegrown 'maters, I realized that we seldom use the parking pad in the back. I had read that Italian women in fourth-floor walkups in Hell's Kitchen in New York City often grew Roma tomatoes, basil and other goodies in the flower boxes in their apartment windows. I found this splendid and evocative, and in an attempt to be perspicacious, I thought why can't I try that in homage to these imaginative women on our seldom-used alley parking pad!

To make a long story short, I began growing natives for our friend Nancee who runs Naturescapes in Collinsville, and in order to reduce her fiduciary obligation to us, I suggested that I take partial payment in pots and potting soil.

And so the container garden began. Datawise, the tomatoes and peppers in the parking pad container garden are two to three times larger than their siblings in the garden. As I write in latest June, contrary to Don's fears, nobody has yet trashed them in

spite of the fact that they are open to the alley without the protective benefit of a fence.

And so, even when space is limiting there is no reason to deny oneself of the epicurean delights of home-grown maters. They can be grown in a 2-5 gallon plastic containers and in fact do better than equivalent plants in our harsh Tower Grove Heights clay-rich soil!

Tomatoes are heavy feeders, and appreciate liberal applications of "blue water" (Miracle-Gro dissolved in tapwater).

There is something very charming about growing tasty food, not only for oneself but for one's friends and neighbors. It is a different apple to pay a fortune for a cardboard tomato at Schnucks versus watching a tasty mater maturing in the midst of our hard-earned homes. I wish everyone could enjoy such simple treasures.

## STREET BEAT

by Don Hardin

Seen any good movies lately?

Jane (Juniata)  
Enjoyed Studio  
54 and Sliding  
Doors



Amanda (Connecticut)  
Red violin and  
Tom and Viv  
about the life  
of T.S. Elliot

## Principal JoAnn Perkins Retires From Fanning

JoAnn Perkins, principal of Fanning Middle School, retired in June 1999 after thirty-two years as a teacher and administrator in the St. Louis Public Schools. Twenty-four of those years she spent at Fanning.

From 1992-97 she has been Fanning's principal. She started as a teacher of Educable Mentally Handicapped Children in 1967 at Fanning. She believes that over the years "the students' behaviors have kept pace with society's expectations for them."

From 1979-84 Perkins was administrative assistant to the principal at Fanning. After a two-year stint at Blow Middle School (1984-86), she served as principal of Grant Middle School from 1986-92. Then she returned to Fanning as its principal.

Perkins praises the schools' ability to provide for the special needs of children: "So many needs are being served," she added. "If there is a need, the St. Louis Public

Schools can fill it." For example, Fanning offers programs for kids who are studying English as their second language, kids who are learning disabled and autistic, and kids who are academically gifted—all under one roof!

Perkins has enjoyed living in this Southside neighborhood all the years she has been involved with educating students. In fact, her parents, her children and her grandchildren have also chosen to live in the Tower Grove South area. Perkins has lived here since she was three years old.

Perkins feels that she and her family share a total commitment to this community. Years ago, when she and her husband wanted to buy a home in Tower Grove South, she was a young teacher who heard that her principal at Fanning was selling hers. The Perkins Family bought the principal's house.

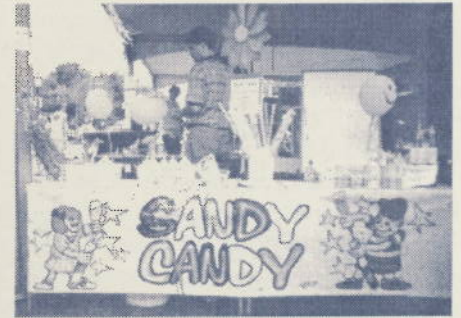
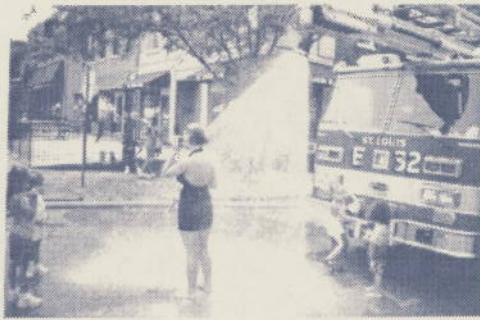
Years later, JoAnn Perkins became the second Fanning principal to occupy her home.



# A Hot/Cool Time!!

By Don Hardin

Saturday, July 31 and Sunday, August 1, it was HOT, close to 100 degrees in the shade, but the Festival of Nations was cool. Just the concept of blocking of Grand South Grand for a party....what a cool idea! I joined the crowds enjoying the music, meeting up with friends and neighbors, and having a cool drink. Music was in the air and the old and young alike were young at heart. Despite the heat...it was Cool.



## News from the Park (cont.)

many relaxing summer evenings for visitors in the park. These nights offer a unique opportunity for listeners to enjoy a variety of music and Tower Grove Park is pleased to host this series. The Friends of Tower Grove Park also sponsored the Children's Concert Series at the Stupp Center. This educational series entertained children, making the concerts a fun way to learn about music. A new concert series was inaugurated this season by the St. Louis Brass Band. It went so well that organizers plan to bring it back next year.

On September 4th, the Friends of Tower Grove Park will sponsor the second annual "Fly with Me in TGP" Balloon Race. On September 3rd, a balloon glow will kick off the weekend festivities at around 7:30 in the evening. The following day, at around noon, the West End of the Park will be full of games, artists, vendors, and other attractions in anticipation of the balloon launch at around 6:30. This should be a real favorite.

We hope that everyone enjoys the fall season ahead, which is always a beautiful time of year. One special and exciting opportunity this fall will be the renewal of our Palm House Chamber Music Series, by the St. Louis Symphony Orchestra. The new fall series will begin this year and will be at 7:00 p.m. on the evenings of October 12, November 9, and December 7.

### Tower Grove Heights Needs You!

Look at the mailing label of this Gazette. If you are a member it will tell you when your membership is due for renewal.

If you are not a member-join today and you will be mailed all 6 issues of the Gazette. Membership dues raise more funds for the neighborhood than any other activity.

Memberships are as follows, please check ONE:

- ☐ Individual (1 vote) \$7/yr
- ☐ Family (2 votes) \$12/yr
- ☐ Renaissance (1 vote) \$20/yr
- (Includes a set of TGH note cards)
- ☐ Business (1 vote) \$25/yr

(Includes 10% discount on Gazette Ad for 6 issues)

Please PRINT.

Name \_\_\_\_\_

Address \_\_\_\_\_

Phone \_\_\_\_\_

Email Address \_\_\_\_\_

Return this form and your check to: your block representative or mail to Tower Grove Heights Neighborhood Association, 3735 Connecticut, St. Louis, MO 63116.

- ☐ Please include me in the 1999 Buzzbook
- ☐ Please do not include me in the 1999 Buzzbook



## TGH LIVING

by Brian Marston

My wife and I bought a two-family house in Tower Grove Heights in April 1998, and we already feel at home. Tower Grove is extremely diverse ethnically, racially, and economically. Amazingly, we all get along quite well.

Property values in the neighborhood are on the way up, but it's still easy to find affordable housing in the area. Eventually, we plan to convert our building to a single-family home, but in the meantime, the difference between our mortgage payment and the rent our tenant pays us is only \$60/month. The housing stock consists mostly of 80 to 90-year-old brick two-story homes with hardwood floors, high ceilings, and lots of fireplaces.

Even though rehabbed homes in Tower Grove are going for \$300,000+, the neighborhood has so far resisted the urge to become gentrified and elitist.

Tower Grove is imbued with a great sense of community. Its dense population isn't separated by any highways, major roads, or other obstacles, so it maintains a cohesive small neighborhood feel, thanks in part to its strong neighborhood associations. When I walk my dog around the block, neighbors on their porches wave and say "hi," and kids run out to pet him.

Tower Grove is one of the few self-sufficient, walkable neighborhoods in St. Louis. Grocery stores, a bank, a post office, hardware stores, video stores, a record store, and a dry cleaner are all within a few blocks. Grand South Grand, which runs down the eastern edge of the neighborhood, is lined with wonderful ethnic restaurants and funky little shops and coffee houses. Big and beautiful Tower Grove Park is on the north edge of the neighborhood, and Saint Louis University is nearby. The area is also equidistant from the fun in Forest Park and downtown.

Brian Marston  
3800 Block of Connecticut  
Computer Programmer  
Marston Financial Systems, Inc.



## Tower Grove Heights Homes

*In the Business of Neighborhood Building*

Susie Gudermuth (314) 771-7097

*Superior quality, custom renovated  
Turn of the century homes in an  
exceptionally fine, traditional  
neighborhood.*

**Urban Living  
with a  
Small Town  
Feel.**

## Messiah Lutheran School



**A school for children of all nations**

Full day Kindergarten through Grade 5  
Associated with Concordia Middle School (Grades 6-8)

Government Lunch Program - Before and After School Care  
Reasonable Tuition - Christian Values - Safe Environment

Serving the Tower Grove Area for over 50 years

**ENROLLING NOW!**

For more information call  
**771-7716**

Messiah Lutheran School  
2900 South Grand Blvd. St. Louis, MO 63118

# FREE CHECKING

Why even consider a checking account that steadily chips away at your balance? At Commerce, we offer totally **FREE CHECKING**.

- No monthly fees
- No minimum balance
- Unlimited check writing

Just apply for a no-annual-fee Special Connections VISA® or MasterCard®

Tower Grove Banking Center  
3134 South Grand  
746-8211



**Commerce Bank**  
Member FDIC

Personal Account  
Only



## CARPENTER BRANCH September Library News

For more information call 772-6586  
Manager: Chang Liu  
YS Librarian: Judy Beckwith

### CHILDREN/YOUNG ADULTS

#### WEDNESDAYS:

September 8, 15, 22, 29  
10:00 - 10:45 a.m.

**FALL INTO BOOKS -  
PRESCHOOL STORYTIME**  
Stories & Activities  
Ages 2 - 6  
Groups of 10 or more -  
Please call to register

Saturday, September 18  
2 - 4 p.m.  
**BACK TO SCHOOL RALLY!**

Thursday, September 23  
7 - 8 p.m.  
**HARVEST MOON FESTIVAL**  
Enjoy lunar folklore, learn the  
autumn sky,

## THE STREETS OF THE HEIGHTS

continued from page 4

...because it referred to a spring that ran through the west end and the Lindell estate. This spring also ran under a limestone bridge that later served as a natural bridge for a road of the same name. Gustine Avenue's story is much simpler. Gustine was platted by James Russell and was named after one of his relatives.

So the next time you drive down Juniata or Wyoming or Spring think about rivers and Revolutionary War battles.

### STREET BEAT (cont)

Seen any good movies lately?



Craig  
(from Souland)  
Saving Private  
Ryan



Mike (Hartford)  
I'm just too busy - I  
have no time for  
movies

Take home a glow-in-the-dark  
creation.  
Grades 2 - 5  
Registration required.

#### ADULTS

7 p.m. Thursday, September 2  
Library Workshop - Learn to use  
the Library's automated catalog.  
7 p.m. Monday, September 20  
Book Discussion Group  
Your Blues Ain't Like Mine  
by BeBe Moore Campbell

#### DISPLAYS

Back To School  
National Library Card  
Sign-Up Month  
Banned Books Week,  
Celebrating the Freedom to Read  
**October Library News**  
CHILDREN/YOUNG ADULTS

WEDNESDAYS, October 6, 23  
10:00 - 10:45 a.m.

**FALL INTO BOOKS -  
PRESCHOOL STORYTIME**  
Stories & Activities  
Ages 2 - 6  
Groups of 10 or more -  
Please call to register

Thursday, October 14 10 - 11 a.m.  
**HANDS ARE NOT FOR HITTING**  
Presented by the Violence  
Prevention Coalition  
Grades 1 - 3  
Teachers: Please call 772-6586 to  
register  
Wednesday, 27, 10 - 11 a.m.  
**PRESCHOOL HALLOWEEN PARTY**  
Show off your costume and celebrate  
with stories, songs, and a snack.  
Ages 2 - 6  
Registration required  
Wednesday, 27, 7 - 8 p.m.  
**GHOST STORIES AROUND  
THE CAMPFIRE**  
Listen to some scary stories, then tell a  
few of your own.  
Refreshments served  
Ages 7 - 12  
Registration required

## Meet Your Neighbor

...studies. She also worked at the Judevine Center with autistic children and the International Educational Consortium, helping to design curriculum for area school teachers and doing a lot of grant writing.

During this time they became parents to Oscar, and Sarah soon decided she wanted to be at home with him more and gave up her full-time work. She took on part-time work with the English as a Second Language program and the Springboard to Learning program, teaching German and Austrian culture to 5th graders.

Now that Oscar is in preschool, Sarah has taken on the job as co-coordinator of Neighborhood Preschool, a cooperatively, parent owned and managed preschool in the Shaw neighborhood. In addition, they now have another son, Peter, who is now 7 months old. Along with the full-time job of parenting and her 3 part-time jobs, Sarah volunteers at Plowsharing Crafts, Coalition for the Environment, and the German Cultural Society. She is also actively involved in La Leche League and is a TGHNA block captain! She sounds pretty ambitious, doesn't she?! Well, she does manage to have time for fun also and she's a neat lady! Give her a call if you are interested in the Neighborhood Preschool for your child at 664-2654.

### NEIGHBORHOOD PRESCHOOL

Non-profit, secular and parent  
cooperatively run. Serving South  
St. Louis since 1970.  
3964 Castleman  
(in St. Margaret of Scotland School.)

664-2654



## **Tower Grove Heights Neighborhood Association**

Monthly meetings held at 7:15 PM on 4th  
Tuesday of each month at the Church of  
Divine Science, 3617 Wyoming Street.

**President:** Elizabeth Braznell  
**President Elect:** Cheryl Jones  
**Secretary:** Diane Hurwitz  
**Asst. Secretary:** Stacy Leimbach  
**Treasurer:** Patty Schneider  
**Past President:** Mark Abbott

### **COMMITTEE CHAIRS**

**Block Representatives:** Joe Thele  
**Fun and Fundraising:** Jeffrey Blunt  
**Physical Improvements:** Mark Abbott  
**Prom. & Marketing:** Amanda Doyle  
**Publications:** Sara Langan  
**Neighborhood Safety:** Robert Jones  
**Tenant Committee:** Jeff Muse

### **BLOCK REPRESENTATIVES**

**3600/3700 Arsenal**  
J. Andrew Haberem, Margaret Prichard  
**3800 Arsenal**  
Elliott Blevins, Fredric Rissover  
**3600/3700 Hartford**  
Gretchen Arnold  
**3800 Hartford**  
Chris Cleeland  
Joe Thele  
**3600/3700 Juniata**  
Fran Armstrong, Rodney Dillon  
**3800 Juniata**  
Lucinda McNary  
**3600/3700 Connecticut**  
Judi Sharp, Sarah Griesbach  
**3800 Connecticut**  
Curt Gilker/Sherry Taylor  
Bill/Noel Shamleffer  
**3600/3700 Wyoming**  
Bob Walker  
**3800 Wyoming**  
Pat Strawhun  
**3600/3700 Humphrey**  
Sue Clavin, Mary Fazholz  
Susan Freedman  
**3800 Humphrey**  
Robert Reed  
**3600/3700 Utah Place**  
Doug Harding/ Robyn Schrager,  
Mary Dugan  
**3800 Utah Place**  
Susie Gudermuth, Veda Lynn

## **SCHOOLS**

continued from page 1

Students who are registering at Mann or Fanning need to enroll starting August 23 to avoid long lines later on. Parents should bring proof of residence, shot records (and old report cards if coming in from outside the school district). Any new student coming into the St. Louis Public Schools, should first phone 367-1368 before registering at Mann or Fanning.

**MESSIAH LUTHERAN SCHOOL**, at 2900 South Grand Blvd. can be reached by phone at 771-7716.

This year Messiah is becoming a school for Grades K-5. Grades 6, 7 and 8 may now attend Concordia Middle School on Ohio Avenue (formerly called Holy Cross Lutheran School).

Last year's enrollment at Messiah ranged from between 100-107 students. This year Messiah hopes to enroll about 90 students. Principal is Coralyn VanDermy.

Special programs at Messiah include an elementary band for 5th graders, computer classes, as well as religion, music and physical education courses. Title I remedial programs are also offered. Before and after-school care is available between 6:45 and 8 a.m. and between 3:30 and 6 p.m.

Tuition is \$1,550 per child per year with a price break for families with more than one child attending Messiah. Pupils have access to special education consultants and a school counselor, as needed.

Lucy Shroeder, school secretary, calls Messiah "a school for all nations" with students from Eritrean, Russian and Vietnamese families, as well as families who settled in this area many decades ago.

**ST. PIUS V CATHOLIC SCHOOL** is at 3530 Utah Street. (Phone: 773-8770). In addition to the K-8th Grade programs, St. Pius now offers two Head Start classroom to neighborhood children of pre-school age.

Last year St. Pius had 165 students in Grades K thru 8. Average class size was 18 students per classroom. Tuition and fees this year total \$2,580 per child with a reduced rate for families with more than one child enrolled. Tuition assistance is available from the parish and from grants for those families who qualify.

Sr. Barbara Siderwicz is the school principal at St. Pius. Fourth grade teacher Amy Leipoltz praised the school for its commitment to the community: "St. Pius is proud of its diversity. About one-half of our students are from a variety of ethnic backgrounds."

In addition to special programs in religion, music and physical education, St. Pius offers computer education and a Title I remedial program. The school has a full-time English-as-a-Second-Language teacher and access to a counselor and social worker, as needed. St. Pius is especially proud of its speech and track teams. The school also offers Scouting programs and CYC sports teams.

### **WANT TO ENROLL YOUR CHILD?**

If you are a new family living in this area, you should phone 367-1368, the Recruitment Center, before registering at either Mann or Fanning Public Schools. If at all possible, please do so by August 23. If you are considering one of the other parochial schools, call for a special tour of the school, preferably during the morning. The principals at all five schools welcome you and your children to come and see what they have to offer.

### **TGHNA**

**3735 Connecticut  
St. Louis, Mo 63116**

NONPROFIT ORG.  
U.S. POSTAGE  
PAID  
ST. LOUIS, MO  
PERMIT NO. 3794