

Tower Grove Heights Gazette

Grand to Gustine

Arsenal to Utah Place

June 26, 1993

Volume 5, Number 7

TRX AND TREATS

By Stephanie Gavin

Just one short year ago, Frank Neal and Mike Mahler brought CHEAP TRX to Grand South Grand. With an eclectic assortment of everything from custom art and jewelry to cards, T-shirts and antique toys, CHEAP TRX has been a welcome addition to the Southside. And apparently the area has made them feel quite at home... so much so that they are about to open twice as much space next door.

With a Grand Opening date of June 19th (in sync with Summerfest '93), TRXanX (pronounced "tricks annex") Smart Bar "will absolutely blow them off South Grand," says Frank. Although there are plenty in New York, Chicago, and L.A., the concept of a Smart Bar is new in St. Louis. Serving only non-alcoholic beverages, a smart bar is a place for the very young and old alike. If the new concept doesn't "blow them off South Grand," the neon will.

The back half of the new building will consist of a consultation area for clients, visible studio space so people can see Frank and Mike at work, and an extension of store merchandise displays. About a

quarter of a wall will divide the extension of the extraordinary from the addition of the phenomenal. The north and south walls of the front half will be mirrored. The ceiling will be chartreuse; the quarter wall coming down will have a cobalt blue stripe of neon and a hot pink lightening bolt. The 8 - 10 30" round tabletops and bartop will be hot pink with glitter formica. A neon Chinese firecracker print will be on one wall, along with neon around the window. Although the space is small, the mirrors will add the illusion of space. "It will be infinity," says Frank. "I want it to be very, very crowded. Our intention is to bring people in and make them stay longer. I want this to be a sort of hang out for the neighborhood."

And a chic hangout it will be. In accordance with the Smart Bar philosophy, an assortment of "smart" frozen blender drinks, full of various vitamins and minerals for the enhancement of the mind and body, will be available. There will also be fountain sodas, non-alcoholic cocktails from Tom Collins to Shirley Temples, Italian creams, a full espresso/cappuccino bar, herbal teas, and more tantalizing drinks.

A rocket motif will add to the TRXanX experience. All of the drinks will have rocket names, and according to Frank, the rocket menus "will be absolutely fantastic. In fact, we'll have to think of a way to control them. People will want to steal them." The menus will be available to buy.

Extended Friday and Saturday night hours are currently up in the air. "It depends on how well this takes off," says Frank. Another possibility is open microphones for area musicians on occasional weekend nights. Again, a lot depends on the interest people show. Originally Frank and Mike just planned to extend the shop. "We've wanted a coffee house on this end of Grand South Grand for awhile. Since we couldn't find anyone, we decided to do it ourselves!" Despite a five year plan being carried out in less than three years, Frank isn't worried about any risks. "Everyone in the neighborhood has been so supportive... 'I'd like to thank each of you.'" He's counting on the tremendous support continuing and making TRXanX a great success.

Are there any more thoughts of extending in the future? "Oh That's Not All Folks!! We have another surprise coming." That is if Grand South Grand is not completely blown away on June 19th.

SINCE YOU ASKED

By Don Hardin

What kind of businesses would you like to see open on Grand South Grand?

Jim Fraizer: "We need a variety store on Grand South Grand."

Colette Price: "Tower Grove Creamery has closed; we need an ice cream store."

Norma Rehme: "I would like to see a card and gift shop open."

Dorsey Williams: "If we had a retail computer store, I would be it's biggest customer."

Rick Clinebell: "We need a 60's style coffee house serving cappuccino, Cafe Hapsburg, and offering acoustic music."

Jocelyn Kreitner: "I would like to seem more clothing stores open on Grand South Grand."

Robert Koehr: "Oakhill Hardware is great, but we need a hardware store on Grand South Grand."

Donna Fluhr: "I miss Woolworths - we need a variety store where you can buy a button, a hinge, etc."

Neda Bansbach: "I would like to see some stores like there were 30 years ago on Grand South Grand: a card shop, a shoe store, clothing stores."

In This Issue

TRX and Treats	1
National Night Out	3
Summerfest	4
Horticultural Corner	5
Chautauqua	6
The Renovator	12
My Favorite Mechanic	13
Elements of Design	14

The Tower Grove Heights Gazette
Publications Chairperson:
Don Hardin
Editor: The Staff
Graphics Editor: Michele Kerr
Staff: Tom Booth, Elizabeth Braznell,
Benjamin Chu, Stephanie Gavin, Don
Hardin, Jody Heliker, Tricia Heliker,
Rich Iezzi, Lou Jenneman, Tom
Jenneman, Terry Mayes, Margie
Meyer, Leslie Miles, Victoria
Cusumano Miles, Ed Schroeder
Graphic Artists: Tim Barker, Michele
Kerr, Mary Schroeder, Janice Nesser,
Database Manager: Tom Booth
Business Manager: Donna Mayes
Circulation Coordinator:
Lou Jenneman
Typesetting: Margie Meyer
The Gazette is a non-profit publication
that is published bi-monthly by the
Tower Grove Heights Neighborhood
Association. For information concern-
ing advertising call Donna Mayes at
664-5449. Your letters and comments
are always welcome at the Gazette.
Mail them to: The Gazette/TGHNA
P.O. Box 63046 St. Louis MO 63163

ON GRAND

By Lou Jenneman

Are you feeling out of shape? Do you have trouble breathing after the climb to the second floor? It is time to visit the new addition to Grand South Grand.

As described by owner and operator Julie James, the purpose of SOUTH GRAND IN MOTION, located at 3206 South Grand, is to focus on exercise and dance, with the goal of helping you achieve total fitness. From ballet and "body moves", to hip-hop for your bored teenager, SOUTH GRAND IN MOTION is a welcome addition to the growing list of services available in our neighborhood.

Classes are available to children and adults of all ages. Body Moves I and II are classes of Julie's creation that include stretching, and a combination of aerobics and dance moves that even the beginner will find fun. Ballet Moves are not just for the experienced. These are classes designed to teach anyone exercise ballet. Classes specifically for children are available.

An added attraction to visiting South Grand in Motion is the art work provided by Cheap Trx. The renovation completed by Julie includes bright colors as well as the availability of dressing rooms.

During the summer, special workshops on massage, Yoga and Tai Chi will be starting. Watch for flyers and posters to announce dates and times. Stop in and visit SOUTH GRAND IN MOTION or call 773-0131 for more info on this unique and innovative business.

Doing More Than You'd Ever Imagine



Missouri Botanical Garden

EDUCATION RESEARCH HORTICULTURE

Imagine how you can help. Call 577-5100 for information
on becoming a Garden Member or volunteer.

**4344 Shaw Boulevard
St. Louis, Missouri**

NEWS AND NOTES

FROM THE PRESIDENT'S DESK

Jay P. Rosloff
QUIZ TIME

The following quiz is open book, feel free to take all the time you need. Use of crib notes is silly.

Question #1: Henry Shaw named it Tower Grove Park because of

- A) The huge water tower standing at nearby Compton Reservoir.
- B) A lonely stand of towering trees on the site.
- C) The tower-like turrets on Henry Shaw's home and others of the era.
- D) The old fire-watch tower of 1847.

Question #2: Why is the Tower Grove Heights Neighborhood Association important?

- A) It publishes this really neat newsletter every two months.
- B) It provides a forum for a dialogue between residents and the city government.
- C) It helps create a sense of community identity and promotes the value of city life and your property.
- D) It creates opportunities for neighbors to meet and help each other.

Question #3: What can an individual do to improve the neighborhood?

- A) Join the TGHNA.
- B) Pick up litter and plant a garden (or water a new street tree).
- C) Join a TGHNA committee.
- D) Watch out for your neighbor and patronize local businesses.

Answers:

- 1) Don't be lazy, walk over to the office and ask!
- 2) E, all of the above.
- 3) So what are you waiting for?

KIDS' DAY

By Jodie Heliker

TGHNA is sponsoring the 2nd annual Kids' Day in the Park on Sunday August 22. Children ages 3 to 14 are invited to participate from 11 a.m. to 2 p.m. The day will be filled with games and art activities. Lunch will be served and children will decorate cupcakes or dessert. The event is FREE but registration is required. Adult volunteers are needed to prepare art supplies, make cupcakes, supervise activities and be group leaders. If you would like to volunteer, register children or need more information, call Jodie at 773-7130. Registration is limited so call soon.

NATIONAL NIGHT OUT

By Tom Booth

Once again this year the residents of Tower Grove Heights will have a chance to join in a spirit of community on August 3, when "National Night Out" takes place in our neighborhood and a number of others in our area.


"National Night Out", which is observed nationwide, is a way for communities to show their pride and neighborhood awareness. It has been observed across the nation for the last 10 years, and each year it provides our area an opportunity to see friends and develop a stronger sense of unity.

Unlike last year, when Spring was blocked off, this year's activities call for each block to organize its own party, without one central activity area. Each block can obtain a street closing permit for no charge from "Operation Safestreet", but they have to apply by July 6.

This year's theme is "A Going Away Party", (for crime and drugs). Each area involved is encouraged to promote itself as a "Zero Tolerance Neighborhood".

S

ALON T. LOUIS




3147711-0000

A haircut can be too much reality for anyone. At Salon St. Louis, Terry Harmon knows when a client doesn't really want short hair.

"I can hear it in their voices," he says. "If I don't hear that conviction, I don't cut it short." As a prelude, he massages aromatherapeutic oils into the scalp. Clients can also wear a stress-reducing yoke that relaxes the neck muscles. Clients' kids' hair he cuts free. Call in advance; he regularly flies to Europe to do styling shows. His styles, photographed by Brenda Hootselle of St. Louis, have appeared in the international journal *Passion*, Spain's *Peluqueras* and Italy's *Esthetica*.

St. Louis, March 1991





FAIR

Fetishes • Kachinas • Pottery
Storytellers • Tapestry • Masks
Jewelry • Bola Ties • Belts
Scarves • Shawls • Sweaters
Handbags • Backpacks
Crystals & More



11 am-6 pm • MON-FRI
10 am-6 pm • SAT

3111 SO. GRAND BLVD. • 314-773-7733

HORTICULTURAL CORNER

My Favorite Landscapes



This Horticultural Corner is a break from the usual format of instructions and suggestions. I've been asked to pick a few of the best landscapes in the Heights. But, I had a difficult time with the word "best" because it implies that there is a "worst". There are many, many, MANY good landscapes, so what I've done is to select a few of my favorite front yards.

Let's take a tour of the Heights beginning with Arsenal. If you're a property owner or live on Arsenal what better land-

scape could you ask for when outside your window is the magnificent Tower Grove Park. As a pedestrian I found 3630-32 to be an appealing landscape with good use of Keystone border for a raised area with bleeding hearts and hostas within its boundaries and splashes of annual color with impatiens. 3644 caught my eye because of the hanging containers of fuschia and spider plants.

36-3700 block of Hartford had many favorites. I'll mention a few that I enjoy. 3664 takes a break from the front lawn look and also a break from the dreaded lawn mower. There is a good combination of roses, pinks, poppies, spider wort and various colors of columbine. Containers with dracena and hostas are a nice touch. 3734 Hartford uses this corner lot effectively. The side area combines vari-

ous groundcovers of ajuga and sedums with a diverse group of perennials: Missouri and evening primrose, dianthus, volunteer snapdragons, crown vetch, candytufts and buttercups. This area certainly presents a challenge with its changing exposures. The front area had more of the primroses, ajuga and hostas. I was particularly taken by the wonderful yellow columbine.

I enjoy the landscape at 3879 Hartford for the effective use of timbers for raised areas, and for their use of unusual tree species, Norway maple and magnolia. This South-facing landscape takes full advantage of the shade from the oak in the easement by growing hostas and boxwoods, and coleus in containers.

I'd like to commend 3806 Juniata for the brave use of grasses in the front landscape. I believe the use of grasses will soon come into their own. A few of the species used in this landscape include miscanthus, phlaris, pennisetum and imperata.

3715 Juniata is a good landscape but honestly what I liked most is the branching pattern of the Scotch pine. It has a grace that speaks to my Japanese Garden background. 3634 uses hollies, yews, hostas, ferns and a flowering dogwood in combination very well. Natural but not too wild.

Continued on page 8

St. Louis

PET CLINIC



Also:

- Grooming
- Boarding
- Food
- Boutique
- Training



2245 S. GRAND

ST. LOUIS, MO 63104

(314) 773-6400

PHILIP L. WAGENKNECHT, DVM

STAR VIDEO

Movie & VCR Rental
Blank Tapes - Video Accessories

3143 S. Grand
664-2844

Sun. - Thurs.
10 am - 9 pm

Fri. - Sat.
10 am - 10 pm

Tower Grove Voice & Piano Studio



Desiree Barnett

B.A. - Rhodes, Memphis
M.M. - C.C.M., Cincinnati

Private & Semi-Private Lessons

3504 Pestalozzi St. Louis, MO 63118
(314) 776-3423

CHAUTAUQUA ANYONE?

By Elizabeth Braznell

The Missouri Chautauqua (shaw-TAWK-wah) is coming to Tower Grove Park on June 30! What's the Missouri Chautauqua? It's six scholars presenting free programs in full costume and character under a huge circus tent. The presentations are historical characterizations similar to Hal Holbrook's Mark Twain.

The fun starts with a tent-raising party Wednesday, June 30 at 6 p.m. at the west end of Tower Grove Park. This is a huge tent, and volunteers of all ages are needed to help raise it. Refreshments will be served.

The 1993 Missouri Chautauqua explores the history of religious pluralism in America and features characterizations of Reinhold Niebuhr, the great Protestant

theologian; Father Pierre De Smet, missionary to Native Americans in the Northwest; Myrtle Fillmore, co-founder of Unity School of Christianity; Daniel Payne, an African Methodist Episcopal bishop; Joseph Smith, Jr., founder of The Church of Jesus Christ of Latter-day



Saints (Mormons); and evangelist Kathryn Kuhlman. These historic figures represent religious movements and traditions that were significant in both Missouri and American history.

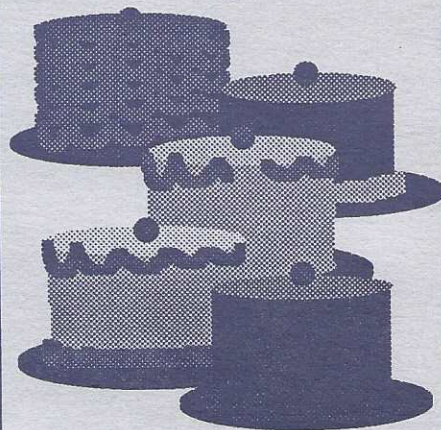
The Chautauqua does not promote religion, nor are religious services held. It

helps interpret the effects religion and religious movements have had on history.

Programs will be held throughout the metropolitan area during the day, but evening events will be held at the tent in Tower Grove Park. Musical entertainment, including one concert by the Comp-

Continued on page 7

Dessert Recipes Needed



Please help us fill the cookbook by sending your favorite dessert recipe to:

Tricia Heliker
3802 Hartford
St. Louis, MO 63116



Mekong

RESTAURANT

FINE VIETNAMESE CUISINE
3131 S. Grand Blvd. St. Louis, MO 63118
(314) 773-3100



South City
DINER

3141 S. Grand • 772-6100

Cocktails Available
we serve breakfast all day

© **LIVE MUSIC** ©

MEXICAN

DUO LOS TROBADORES

Thursdays 5:30 - 9:30



Friday Nites 7:00 - 11:00



Saturday Nites 7:00 - 11:00



July, August '93

Botanicals
on the park

Fine Flowers
& Gifts

3012 South Grand
St. Louis, Missouri
63118

(314) 772-7674

All Major Credit Cards Accepted

Continued from page 6

ton Heights Concert Band, will precede the evening programs. The programs begin at 7 p.m. and are FREE!!

Thursday, July 1, "An Evening with Father De Smet, Missionary."

Friday, July 2, "An Evening with Daniel Payne, African Methodist Episcopal Bishop."

Saturday, July 3, "An Evening with Myrtle Fillmore, Founder of the Unity School of Christianity."

Sunday, July 4, "An Evening with Joseph Smith, Jr., Founder of the Mormon Church."

Monday, July 5, "Compton Heights Band Concert with Reinhold Niebuhr."

Tuesday, July 6, "Reinhold Niebuhr and the Theological Meeting of the Minds

- with Joseph Smith, Jr., Myrtle Fillmore, Kathryn Kuhlman, Daniel Payne and Father Pierre De Smet, S.J."

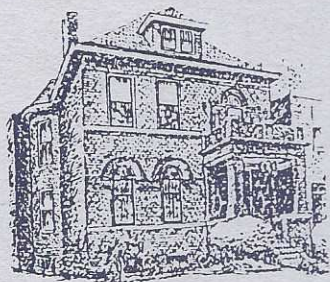
Chautauqua programs have a rich history. Over 125 years ago, programs began at Lake Chautauqua, New York, to train Methodist Sunday school teachers.



Within a few years, other sorts of educational presentations and entertainments were included. As these summer programs grew in popularity, the Chautauqua went on the road--by 1900, some 400 places across the U.S. hosted programs. Even the smallest towns were visited by Chautauqua programs.

The Chautauqua was revived in the 1980s by the state humanities councils of North and South Dakota, Nebraska, Kansas, and Oklahoma. The Missouri Chautauqua is sponsored by the Missouri Humanities Council and the National Endowment for the Humanities. St. Louis is its final stop; it has visited Poplar Bluff, Bolivar, and Boonville. Designed for communities smaller than St. Louis, the Chautauqua is coming to our City because Tower Grove Park, the finest surviving example of 19th-century Victorian park design in the U.S., affords a unique opportunity to present the Chautauqua in an historical setting.

For complete schedules or more information, call Janet or Tom Keller, 664-9420.



3522 Arsenal Street
Saint Louis, Missouri 63118

THE WINTER HOUSE BED AND BREAKFAST

Hosts: Sara & Kendall Winter

Give Your Out-of-Town Guests a Home
Away from Home

(314) 664-4399

TGHNA

General Meeting

Sunday, July 11
7 PM
Divine Science Church
3617 Wyoming

771-5462

EDDIE KANE

Bringing the Beauty of old Homes Alive Today!

A BUILDING RENOVATION COMPANY

CARPENTRY DRYWALL
KITCHENS
BATHS

Quorum

The New Wave In Home Security

Never has protecting your home and family been more important or more affordable.

Introducing the Quorum A-150 Home Security Monitor.

- Dependable Detection
- Quality Guaranteed
- Maintenance Free, Portable
- No Monthly Fees
- For More Information, Contact:

Security Concepts
Terry L. Mayes
(314) 664-5449



Horticultural Corner

Continued from page 5

Strolling south to Connecticut I found 3854 using cobbles as a border containing azaleas and rhododendrons. Raised boxes next to steps are a nice touch with azaleas, boxwood, hostas and an annual display of caladiums and impatiens. Across from my house is 3823. I like the color progression beginning with daffodils then creeping phlox, irises, peonies and mums.

3800 Wyoming has nice landscapes but none that I could say are my favorites. I do want to extend kudos and my appreciation to the devoted residents for planting and caring for the containers on the street corners. Thanks to all of you.

At 3729 Wyoming is a nice collection of irises. What makes this collection special is that the plants are labelled with plant tags. Also the re-use of terra cotta architectural trim is great. 3655 is simple but breaks away from the same old straight line bed and uses simple plantings of barberries, spirea, holly and an Alberta spruce.



I like 3618-20 Humphrey for the use of timbers for a terraced look and the use of azaleas, euonymus and hydrangeas. The red and pink peonies are striking. The use of black kettle containers matches the wrought iron porch columns. Though all my favorites have been front areas, I was able to see a side yard at 3665 from the sidewalk and liked it. This is a space not commonly used but here a flowering dogwood was planted in combination with hostas, impatiens, violets, candy tufts and red dianthus. The purple wandering Jew is a nice accent. I think the best tritoma (red hot poker) I've seen lives at 3729. This landscape has few species but excellent coverage with red dianthus, dusty miller and alyssum.

3817 Humphrey isn't striking but is well tended. What made me stop was a lawn ornament that had a quote:

The kiss of the sun for pardon
The song of the birds for mirth
One is nearer God's heart in a garden
Than anywhere on earth.
Ah, how true!

Finally to Utah, which is a landscape in itself. The green strips are well tended and the diversity of trees: ash, hawthorne, oaks, redbuds and elms are excellent. The various planted beds with miscanthus, phalaris and hostas are a nice addition in these long green spaces. Now to the yards. 3867 caught my fancy for the nice hedge work of yews and the selection of crabapple and magnolias for trees.

3661 Utah takes advantage of the easement tree's shade and it looks as though a nice shade garden is developing. I particularly like the Keystone bed in the middle with the pieris. 3651 is a nice landscape with variegated euonymus. But what has always fascinated me has been the two weeping mulberry trees.

As I walked around I found that most

yards were unique and well-kept. I also noticed that there are many homes utilizing hanging baskets and containers filled with plants such as lobelia, geraniums, new guinea, impatiens, petunias, pansies, marigolds and begonias. Baskets and containers add a different dimension to the landscape and worth using for annual color and unique combinations.

I believe that landscapes speak well of a neighborhood and its people and I believe our landscapes speak very well for us. Keep up the good work Tower Grove Heights and let's keep growing!



Benjamin N. Chu is a Superintendent and the Curator of the Japanese Garden at Missouri Botanical Garden.

Wondering What Step To Take Next?

DR. MICHAEL H. HORWITZ

Podiatrist/Foot Surgery

Outpatient Surgery ▲ Laser Surgery

**Grandview
Foot &
Ankle**

664-3370

Most Insurances Accepted

**3171
South
Grand**

**WHAT DO
YOU
WANT?**

• SECURITY? • CREATURE COMFORTS?
• PHYSICAL WELL BEING?

OR

Are these the 'added things' that the Bible speaks about? What is the big thing? Divine Science has a *vital* answer.

Write or call for a free copy of our brochure

**THE DIVINE
SCIENCE CHURCH**

Of St. Louis,

What We Believe, What We Teach by Rev. Paul Blanchard
3617 Wyoming, St. Louis, 63116
776-7969

REP. PAT DOUGHERTY

New Banking Program Aimed at Owner-Occupied Flats

During the legislative session, I sponsored legislation aimed at stabilizing and re-invigorating our neighborhoods. This effort was successful and once the Governor signs the Omnibus Economic Development Act we will have a new banking program aimed at potential owners of 2 and 4 family flats.

My goal is to increase the number of owner-occupied 2 and 4 family flats in our community. To do this we added a new program to the existing "MO-Bucks" program whereby the Treasurer deposits state funds into banks at below market rates and in turn they loan money at below market rates for specific state approved programs. The program is voluntary on the part of individual banks throughout the state. Now one of these programs will focus on 2 and 4 family flats.

Participating banks will be able to offer below market rates to those who qualify on a one year basis, renewable for up to five years. A major criteria for being eligible will be that an individual must make a binding five year commitment to live in the flat or that individual must live within 1/2 mile of the flat.

In addition, organizations or individuals that develop multi-family properties may also qualify.

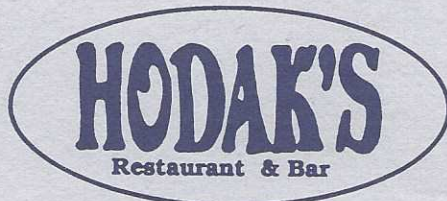
It is my hope that this new program will increase the number of flats that are purchased by owner-occupants or by neighbors in the area who want to invest in our neighborhoods and increase the livability of our community.

A special note of thanks needs to be paid to State Treasurer Bob Holden and his staff for the outstanding work and assistance in helping make this program a reality!

While all the details have yet to be worked out, it appears that this could be up and running this Summer. For further detailed information, please contact the State Treasurer's office in Jefferson City at 751-4943 and ask for Susan Jacobson.

Rep. Pat Dougherty, 4031 Parker Ave., 63116, 772-1948

Open 7 Days



Carry Outs

St. Louis' #1 "Best Fried Chicken"

EVERYDAY PRICES

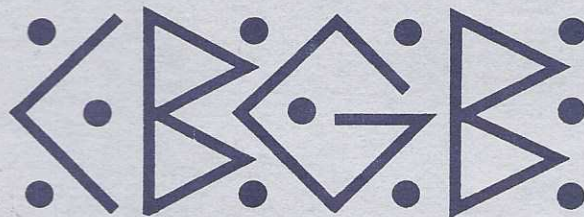
1/2 Chicken Dinner	\$3.85
Merchant Lunch	\$3.25
T-Bone 12 Oz	\$6.50
Catfish	\$5.25
Soda, Tea, Coffee (FREE REFILLS)	60¢
1/3 Lb. Hamburger	\$1.25

BULK RATES

10 Lb. Chicken Wings	\$33.75
50 pc. Fried Chicken	\$33.75
100 pc. Fried Chicken	\$67.50
Slaw (Gallon)	\$7.50
Pot. Salad/Baked Beans	\$9.50
Busch 6-Pack	\$3.75

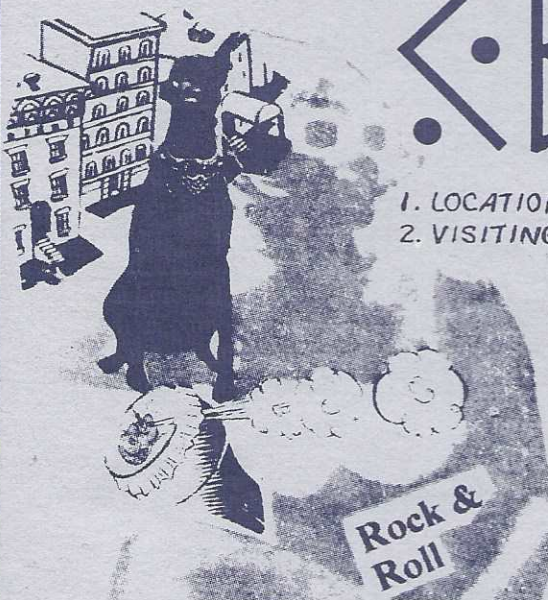
2100 GRAVOIS Take Us Anywhere 776-7292

DO YOU SEE WHAT I SEE?



1. LOCATION: 3163 S. GRAND BLVD.
2. VISITING HOURS: 4-1:30 M-F/6-1:30 SAT.

3. HOT LINE: 773-9743
4. HAPPY HOUR: TILL 7:00
5. DAILY DRINK SPECIALS
6. HOME OF: "THE GIN BUCKET"
7. GOOD!
8. CLEAN!
9. DEPENDABLE!



LOOK AT WHAT'S HAPPENED

TIN & POLYMER CEILINGS
NICHES
DECORATIVE BRASS HINGES
CROWN MOLDING
FURNITURE HARDWARE
BATH ACCESSORIES
GINGERBREAD FRETWORK
GLASS/BRASS KNOBS
WOODEN SCREEN DOORS
PLUMBING FIXTURES
CEILING MEDALLIONS
TUBS, PEDESTALS, SINKS
LINCRUSTA/ANAGLYPTA
DRAPERY HARDWARE

THE RESOURCE

ST. LOUIS BEST RESOURCE FOR THE VINTAGE HOME

WOOD ORNAMENTALS
BRADBURY WALL TREATMENT
LIGHTING
QUALITY KICKPLATES
COLUMNS
WEATHERVANES
DOOR HARDWARE

CHECK PRICES!

Early American Bathroom
FIXTURES & ACCESSORIES
Classic Brass & Hard-To-Find Parts



Plumbing
Fixtures

Pedestal sinks, claw-footed tubs
lavatories, plus a good selection of
old and reproduction fittings

20 cent
Alley Numbers
per City Code

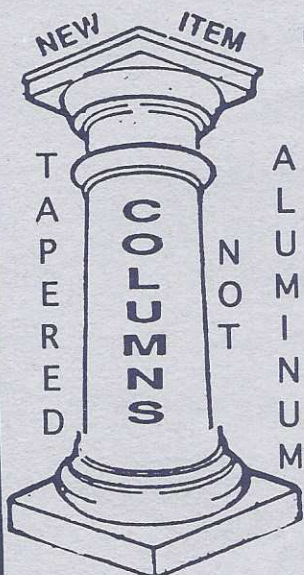
We are like no other store...

OPEN SUNDAY

Not only do we specialize in older homes... but we have an array of items to add elegance... at a reasonable, price... to any home. Seeing this store is a must if you own an older home or are building a new one. Hard to find item...?



The Owner and Kirkwood Store Manager are both residents of Tower Grove Heights Area. Come in and see us.



ALUMINUM

INTERIOR & EXTERIOR
DECORATIVE PLASTER COLUMNS
FOR TABLES / ETC.
GLASS AVAILABLE



2X12 4X10 \$10.00 7 DIFFERENT COLORS
4X12 \$12.00

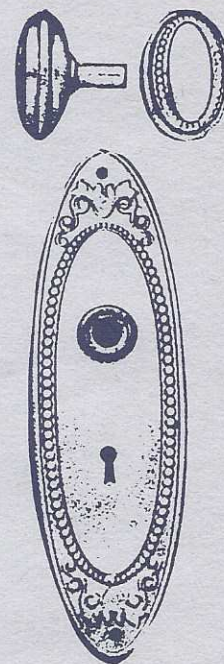
PROGRAM
SOLID BRASS
KICKPLATES
30% OFF



Used Clawfoot Tubs
5' - \$50.00
SHOWER
KITS
AVAILABLE

Our Concept:
To Provide a
source for
specialty
products

- Specialty Wallcoverings
- Wood Ornamentals
- Tin Ceilings
- Door Hardware
- Gingerbread
- Tubs
- Pedestals
- Crown Moulding
- Jewelry for Your Home
- Furniture Hardware
- Drapery Hardware
- All types of Plumbing Fixtures



LAFAYETTE
SQUARE
OPEN SUNDAY
M-F 10-6
SAT 10-5
SUN 10-4

KIRKWOOD
MON-SAT 9-5

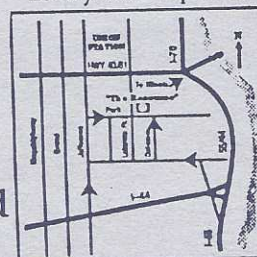
Phone Orders Welcome

1817 PARK AVENUE - 621-0997
238 MEACHAM - 984-0191

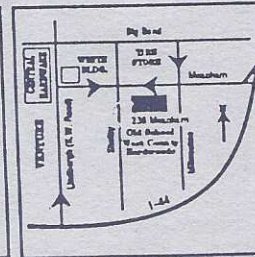
In Historic Lafayette Square & Kirkwood

VISA, MC, AMEX, DISCOVER

Lafayette Square



Kirkwood



DAY TRIPPIN'

By Mary Schroeder

Mid-May I was in Washington, Missouri to be part of an Art and Wine Festival. It was great fun, and I got to get a close-up weekend-long look at the city. Keep it in mind for next year if you are interested in looking at the work of local artists or sampling local wines. Great springtime weather, great spot

Washington, a real gem, is less than an hour away. Take Highway 44 southwest, exit at Highway 100 (the Hwy 100 after the Hwy 100 Gray Summit exit). Follow 100 to the traffic light just after the big Walmart/McDonald's Shopping Center, and turn right. Then look for signs for the riverfront park. Washington is a small river city that hasn't lost the charm of the 1800's. There are small

historic shops, charming restaurants and B&B's. The park itself is very tranquil.

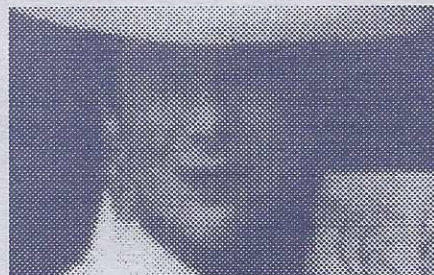
If that is not enough activity for you, jump back into your car and find the Washington Bridge. (It's on the main road visible from the park.) Cross the bridge and drive straight to Augusta Bottoms Road, follow that til you get to Augusta, one of Missouri's well known wine areas. Stop at one of the wineries and enjoy a wine tasting and tour, or buy a bottle and picnic overlooking the vineyards and hills of the town. For a picnic, you can purchase cheese and crackers from local shops, or stop by the bakery in town, or bring your own snacks.

So what if you promised yourself this was the weekend to clean the basement - a trip like this is a wonderful way to waste a Saturday or Sunday afternoon.

MEET THE PRESS

By Elizabeth Braznell

You read or see their work every other month, but do you know who they are or what they do in real life? We thought you might like to Meet the Press! One Gazette staffer will be featured each issue.



Mary Schroeder is a terrifically talented graphicisiphist...uh, graphic artist, and writes well, too. She reviews restaurants in "On the Town" and gets lost with great regularity while researching "Trippin' St. Louis." She designs ads, typesets, and pastes up the Gazette.

In her spare time, she runs her own graphic arts business, shows her art, freelances, takes classes, and coerces her husband, Big Ed, into updating their two-family flat on the 3800 block of McDonald, in which Big Ed has lived all his life.

MEMBER
RELO

RENNI SHUTER, GRI
LIFE MEMBER MILLION DOLLAR CLUB
RELOCATION SPECIALIST

ADOLPH K. FEINBERG REAL ESTATE CO.
4555 FOREST PARK
ST. LOUIS, MISSOURI 63108

BROKER ASSOCIATE

Off. 367-6100
Res. 863-0220

Commerce Has the Right Home Loan For You.

Count on Commerce



Whether you're buying, doing minor improvements or a complete rehab, Commerce can give you the financing to make it happen. With attractive terms to meet your needs. And friendly, helpful professionals to make you feel comfortable.

For complete information give us a call today. We'll help you find a financing plan you can count on. And make you feel right at home.

746-8260

Commerce Bank
of St. Louis Member FDIC

Tower Grove Banking Center
3134 South Grand



LEFT BANK BOOKS

Offering a broad
selection of distinctive
titles in every subject

Quite simply, the best
bookstore in St. Louis

Monday 10-6
Tuesday-Saturday 10-10
Sunday 11-5

Since 1969

399 N. EUCLID
ST. LOUIS, MO 63108
314-367-6731

THE RENOVATOR

By Rich Iezzi

OK, you've finally had it with that crazy pencil thick trickle coming out of the bathroom vanity and you're ready to replace the 80 year old galvanized pipes with copper. Welcome to the world of copper plumbing.

Sweating copper pipes together involves heating the copper pipe enough to melt and draw the solder toward the heat by capillary action, filling the area where the pipes are joined with molten solder.

Like any other project, lay out your plan before sweating that first joint. Draw a sketch and list every possible piece you'll need to avoid surprises. Your basic supplies are a propane torch, 50/50 solder (50% tin, 50% lead) a tubing cutter, soldering paste and steel cleaning brushes for 1/2" and 3/4" pipe. All for about \$25. I use sandpaper to clean the outside of the pipe but love using the round brushes to clean the inside of the fittings (so will you). Think about buying the common fittings (1/2" T's and 90's) by the pound if you have a major job. They're cheaper. I recommend Henry's Plumbing because they've got it all, they know the codes and it's OK to ask stupid questions.

Let's start. Drain the pipes while you're mulling over the job. Shut off the main and open all the valves above and below your work area or the water will glug-glug down on you as it siphons out of the pipes. Your first problem may be getting the water shutoff. If you're replacing everything from the main, install a 3/4" ballcock valve behind the original main valve (say what?). A ballcock valve is the neatest thing in the world. It opens to a full 3/4" and doesn't restrict the water's flow. You can add it as a second main without shutting off the water to the building and removing the original valve. Solder the pipe fitting required to go into the existing valve onto a one or two foot 3/4" pipe, then solder the ballcock valve (in the open position) to the pipe's other end. This gives you working room and let's you screw the pipe assembly onto the old valve even if a stream of water is coming out. Once the pipe is tight, shut the ballcock valve and viola, the flow is stopped.

How's your soldering so far? Common mistakes involve not sanding/cleaning the copper and melting too much solder in the pipe, restricting its flow. Ideally, you should clean all parts to be soldered and coat them with a film of paste. Assemble as you go to prevent laying anything in dirt. Everything should be clean, clean, clean. Don't touch or apply the paste with your

fingers. It's an acid that burns. Once your pipes are assembled "dry", start at one end and apply the torch to the outside fitting (never to the smaller, inside pipe). Touch the solder to a spot on the pipe opposite the flame where the pipes join. When the solder gets sucked into the joint, encircles it and drips out of the bottom, you're done. Never melt the solder with the flame. Let the hot pipe do that. Remember to carry aluminum foil to shield wood from your flame.

Maybe you're just re-running pipes to a bathroom vanity or kitchen sink. Then all you need are the valves for the supply tubes, a threaded copper fitting to get you from iron to copper and those little chrome collars (escutcheons) to cover the holes. Try to solder the valves to the pipe on your workbench, not under the sink. If you can't use a sweat-on valve because of a

water drip, try one with a compression fitting. Be sure to mark the side of the pipe where the valve handles appear or you may find them behind the pipes after you've "blind" soldered them in the basement.

I was working with a friend when we flushed the toilet and had it fill with hot, steamy water. At first it was funny but a real pain to drain everything and resolder; so do a good job tracing your pipes first. And keep in mind you're working with an open flame and molten metal. Protect your eyes and always know where your flame is. Keep an emergency supply of fittings and a fresh torch. A half full tank won't work well in cold temperatures.

Sweating copper pipes is one of the neatest things. It's relatively clean, inexpensive and will last a lifetime. You can even polish your work with steel wool and spray laquer it for that extra touch.

Relax. Let the pipes sweat, not you.



**FARMERS
INSURANCE
GROUP OF
COMPANIES**

Tom Coriell
Insurance Agency

5013 Hampton Avenue
St. Louis, Missouri 63109
Bus. (314) 352-2504
Res. (314) 773-9005

Auto • Fire • Life • Farm • Commercial

golfers



**New Golf Shop
In St. Louis City**

5 Minutes From Arch
5 Blocks South of 44

CUSTOM-FITTED GOLF CLUBS
*Professional Quality and Performance
For the Amateur Budget*

**Kevlar
Monster
Jumbo
Drivers**

New! Hot!
"Zing" Style Irons
*Custom-Fitted To Your Game
Only \$240 per set!*

Latest In High-Tech Components & Design

**CustomWorks
Golf Clubs**

2306 S. Grand Blvd.
St. Louis, MO 63104
(314) 773-GOLF

TGHC 0992

PETER M COHEN

ATTORNEY AT LAW

INITIAL CONSULTATION FREE

CRIMINAL LAW, TRAFFIC VIOLATIONS, DIVORCE,
BANKRUPTCY, GENERAL LAW

2734 LAFAYETTE • SAINT LOUIS, MO 63104 • (314)772-9494

My Favorite Mechanic

By Terry Mayes

In my last column, I said I would talk about what to look for when buying a used car. There are many things most people look at when buying a used machine. (That is, how you need to look at a car, as a machine! This is a mechanical device that operates with the use of fluids, oil, water and different types of fuel.) Unfortunately, the average person is going to look at everything but what needs looking at - the vehicle's cosmetics - WRONG! Those types of things should be the last things looked at. Yes, look at the tires, open the hood, all cars have one. After the hood is open, look in. I know you're saying to yourself, "What's this?" Look for missing or unusual things. Water or antifreeze leaking from hoses or elsewhere, fan belts cracked, etc. Check the dipstick, make sure the crankcase is full of oil and that it's clean because if the oil is dirty, you probably could get the dealer to change the oil for free before you buy. If the oil is low, you most definitely have either an oil leak or the engine is burning oil.

You will need to locate the master cylinder. In most cars, it's on the driver's side of the vehicle, under the hood. Check the brake fluid. If it's full and clear, you will probably be okay although, that doesn't make your brakes good. The pads and brake shoes could still be worn out. So, you'll need someone to check these things for you, someone who's trustworthy.

If the vehicle has an automatic transmission, then locate the transmission dipstick, pull it out and look at the fluid on the stick. If the fluid is a nice wine red color, it's probably okay, but smell the fluid. If it smells burnt, that's exactly what is inside the transmission—burned parts.

If the fluid is okay, replace the dipstick, walk around and start the vehicle, observing all dashlights when the ignition is turned to the on position. I cannot stress this enough because, a lot of used car dealers will unplug these trouble lights on the dash to keep people in the dark about problems the car has.

Start the car and observe the exhaust. If the vehicle has a lot of smoke coming

Continued on Page 15

Sheltons Hair Salon 3208, S. Grand

771-4700

For An Appointment

THE ELEMENTS OF DESIGN

By Dana Winter

Jacob pours himself a cup of coffee and leaves the kitchen. As he moves down the hall he feels the smooth wood beneath his bare feet and then the velvet touch of the oriental rug as he enters the living room.

Admiring the intricately carved mantel, he feels wonderfully content within the silence. He starts a fire and as the wood begins to burn, its husky smell and occasional "pops" add to the tranquility of the setting. As Jacob sits sipping the hot liquid his eyes take in his surroundings. The grey walls, the bookcases filled with all those wonderful works, the artwork above the mantel that speaks to him in a way he finds impossible to put into words. "Yes", he says to himself, "this is so right, so perfect."

Jacob considers himself lucky that in his hectic life he somehow found a person who was able to "read" him and create an environment that allows him to retreat and refresh. Because of these daily escapes, he finds that he is more productive at work and is better able to cope with life's obstacles. Perhaps on

Continued on Page 16

SUDS AND PETS

By Lou Jenneman

Wet dogs, good conversation, and friendly people are just a few of the amenities at Wag and Wash. This business opened at the corner of Watson Rd and Potomac 6 months ago, and business is booming.

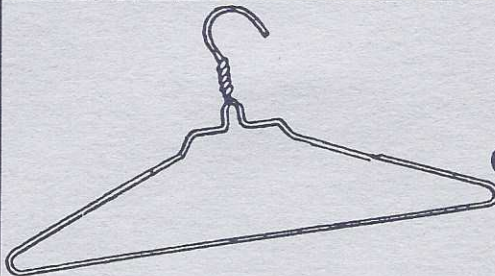
The St Louis areas first do - it - yourself pet wash has everything needed to help keep your pet clean while making life a little easier for owners. Sore backs, bad knees and tons of pet hair down the bathtub drain can be just a memory.

Wag & Wash has standing height washing trays with soap, water, brushes, towels, and rubber aprons provided for a cost of \$7.00. An additional \$3.00 will allow use of the drying machines.

For those pets that need extra grooming before their bath, electric clippers and toenail clippers are available for a small charge. Grooming tables with collars are provided to help make the job easier.

For those dogs that have special coat or skin problems, a \$15.00 package deal buys the use of special shampoos and conditioners to meet those needs. These packages also include the cost of drying.

With a fire hydrant in the corner, and a seemingly unlimited supply of dog biscuits, your dog will enjoy his bath as much as you will enjoy the atmosphere. Cats are welcome!! If you dread Rover's next bath, Wag & Wash may be the answer.



PHONE
772-1155

ORPHEUM CLEANERS

FAST PERSONALIZED SERVICE
CLEANING - REPAIRING

3199 S. GRAND BOULEVARD
AT WYOMING

MID EASTERN MARKET

3201 S.
Grand Blvd.



أسواق الشرق الأوسط

Halal Lamb
Chicken and Beef
Mid Eastern Deli
Pita Breads - Pastries
Imported Cheeses
Olives - Coffee
Tea - Spices

Open
8:00am - 8:00pm
Daily
314-771-9599

Selling Homes... Building Neighborhoods



Wayne Failoni

When thinking of buying, selling, renting or investing, call Failoni Consultants, the real estate professionals.

Providing complete real estate and property management services.

Failoni
Consultants, R.E.

2242 Thurman Avenue,
St. Louis, Missouri 63110



772-8407

MY FAVORITE MECHANIC

Continued

out, shut it off and just say "Thank you" and leave. If not, continue with your inspection by listening to the engine with the hood open. Just stand around and shoot the breeze while the vehicle is warming up. Once the engine is warm,

look at the engine carefully, watching for oil and water leaks. A warm engine will reveal many things a cold engine won't. When the engine is at operating temperature, pull out the transmission dipstick again and make sure the trans-

mission is full. When the transmission is cold, it will not read properly on the stick. It must be at the normal operating temperature. I haven't mentioned checking the radiator because, a radiator that is slightly warm can hold extreme amounts of pressure. I don't want to be the one to get you scalded, so, wait until the engine heats up and then check the dashboard gauges and lights. You're always better off with gauges instead of idiot lights. After all, the dealer could have unplugged the lights. Never trust dash lights, instead trust your sight and smell. That's how a mechanic finds trouble in your car.

Once all these things are checked, then check the cosmetics of the car. First, check the lights, then the body of the car, making sure you look at the body lines. This means looking for gaps in doors and looking down the sides of the car. By simply knocking on the side of the car all along the panels of the vehicle, you can tell if there's body putty in the car. There will be a very muffled sound.

Once this is done, take the car for a long drive. Be sure to take along the dealer's phone number in case of a breakdown. If you don't feel capable of pulling these things off, then take the care to someone you trust to do a complete inspection before you buy. Don't trust the dealer! Set it up with your garage prior to your test drive, otherwise you may have trouble finding someone to do this on the spur of the moment.

Remember folks, drive courteously. That will increase your driving safety factor which will, in itself, make your driving more enjoyable. Buckle up!

Dessert Recipes Needed

Please help us fill the cookbook by sending your favorite dessert recipe to:

Tricia Heliker
3802 Hartford
St. Louis, MO 63116



GERALDINE (GERRY) OSBORN

ALDERMAN, 15TH WARD

ROOM 230
CITY HALL
622-3287

HOME: 773-8416



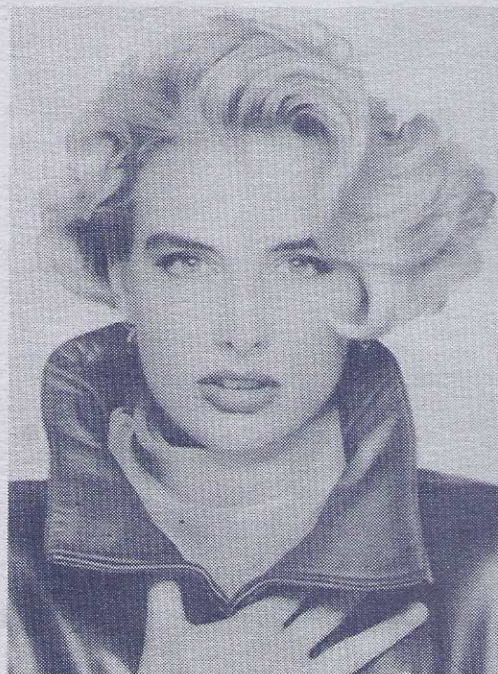
INNER SPACES

Interior Design
Consultation
Planning

Gift Certificates Available

Tricia Heliker

3802 Hartford (314) 773-7130



GET SOME
body
TO LOVE

TRUST
Permanent Body System

Any body you can imagine.
From serpentine-soft waves to curliest cues.
Always seductively silken and shiny.
Minus post perm odor!
Body the way it should be.



2233 S. GRAND

ST. LOUIS, MO 63104

314-771-9001

**Tower Grove Heights
Neighborhood Association**

President: Jay Rosloff

President Elect: Margie Meyer

Secretary: Michele Kerr

Asst. Secretary: Diane Hurwitz

Treasurer: Don Detsch

Past President: Janice Nesser

COMMITTEE CHAIRS

Block Captains: Tom Jenneman

Fundraising: -

Neighborhood Imp:

Promo. & Marketing: Jean Iezzi

Publications: Don Hardin

BLOCK CAPTAINS

3600/3700 Arsenal

Diane Hurwitz (3640)

3800 Arsenal

Jean Iezzi (3809 Hartford)

3600/3700 Hartford

Marilyn Abbott (3648)

Carol Hoffmeister (3656)

3800 Hartford

Jodie Heliker (3802)

Donna Mayes (3825)

Bill Wright (3836)

Jan Booth (3807)

3600/3700 Juniata

Paul Ladensack (3650)

3800 Juniata

Anita Barker (3818)

Pam Blanner (3810)

Shauna Feely (3871)

Tod Flak (3850)

3600/3700 Connecticut

Kirk Brandt (3652)

Tom Corriel (3618)

Chris & Rich Jamison (3625)

Micky Schultz (3618)

3800 Connecticut

Mike & Judy Johnson

Margie Meyer (3860A)

3600/3700 Wyoming

Paddy McPhillips (3668)

Betsy Vanderheyden (3656)

3800 Wyoming

Linda & Peter Fick

3600/3700 Humphrey

Felicia Foland (3671)

Kati Guerra (3671)

Brian Stefanick (3649)

Joe Sueme (3728)

3800 Humphrey

Annette Latham (3814)

Patricia Goddard (3840)

3600/3800 Utah Place

Lou & Tom Jenneman (3735)

Michele Kerr (3636)

3800 Utah Place

Katy Blair (3862)

Susie Gudermuth (3834)

Veda Lynn (3855)

some level luck does play a part in this scenario, but the interior designer that Jacob hired worked within a standard program that is all too often overlooked by many in the design community, the initial planning stage.

In the initial planning stage the integration of four basic considerations are necessary for the success of a design project. These are 1) the functional needs, 2) the budget 3) the aesthetic appeal and 4) the client's individuality. By briefly describing these necessary considerations one becomes aware of their importance and the potential for failure if one aspect of this design process is overlooked. To be liveable, a house should fulfill its intended functions. It should satisfy the needs of the people for whom it is designed. To establish this criteria, a profile of the inhabitants of the space should be completed. From this profile the designer is able to create floor plans and establish the best types of materials and finishes to be used.

Once the functional needs of the client(s) are established, the designer can then concentrate on the economic considerations of the job. A budget allows the designer to focus only on those materials and furnishings that the client can comfortably afford.

The more creative the designer, the greater the potential for success when working with a smaller budget. Beauty has been described as that quality which pleases the senses and lifts the spirits.

And as the tired expression goes, "beauty is," indeed, "in the eye of the beholder." The designer's next concern is to establish through a series of questions and viewing of photographs those elements which define "beauty" for the client. Aesthetically pleasing design varies considerably from one individual to another. For Jacob, grey walls and contemporary artwork adapted nicely to his minimalistic lifestyle. But to the person who loves the nostalgic feel of Victorian interiors Jacob's living room would appear boring and incomplete.

Finally, the designer should tap into that elusive quality of "individuality" that the client possesses. Understanding the personality of the client and adapting it to the living space helps to ensure that the design will "touch" the client. This can be accomplished by surrounding the client with items that he values, not necessarily in a monetary sense, but items that make him feel comfortable. For Jacob, it's built-in bookshelves filled with leatherbound works by his favorite authors. For another, it could be African artwork, rubbings from a temple, violins displayed on a wall or antique baskets.

In order for a client to feel that the design of his home reflects his lifestyle, taste and interests the designer must in some way integrate these four considerations into his design process. For the true measure of success of a design job lies in the client's "fit" with his new environment.

Tower Grove Heights Gazette
3203 South Grand Blvd., Suite 103
St. Louis, Missouri 63118